

Zoom Webinar Protocol



It would be great to see you

Mute your microphone when not talking

Use the Chat to post your questions for the presenter

Use the **Chat** to contribute additional information, links, chat with fellow delegates

In Zoom's **View Options** you can control how to view Zoom and access your computer

Access TAL2020 programme and Zoom links [here](#)

TAL2020

REMOTE LEARNING IN HIGHER EDUCATION AND ITS IMPLICATION ON KNOWLEDGE DISSIMINATION- EMPOWERING STUDENTS IN A COURSE

13.15-13.35 Tuesday, 3.11.2020, SDU

Maria Elo and Surabhi Verma

Associate professor & Assistant professor, University of Southern Denmark

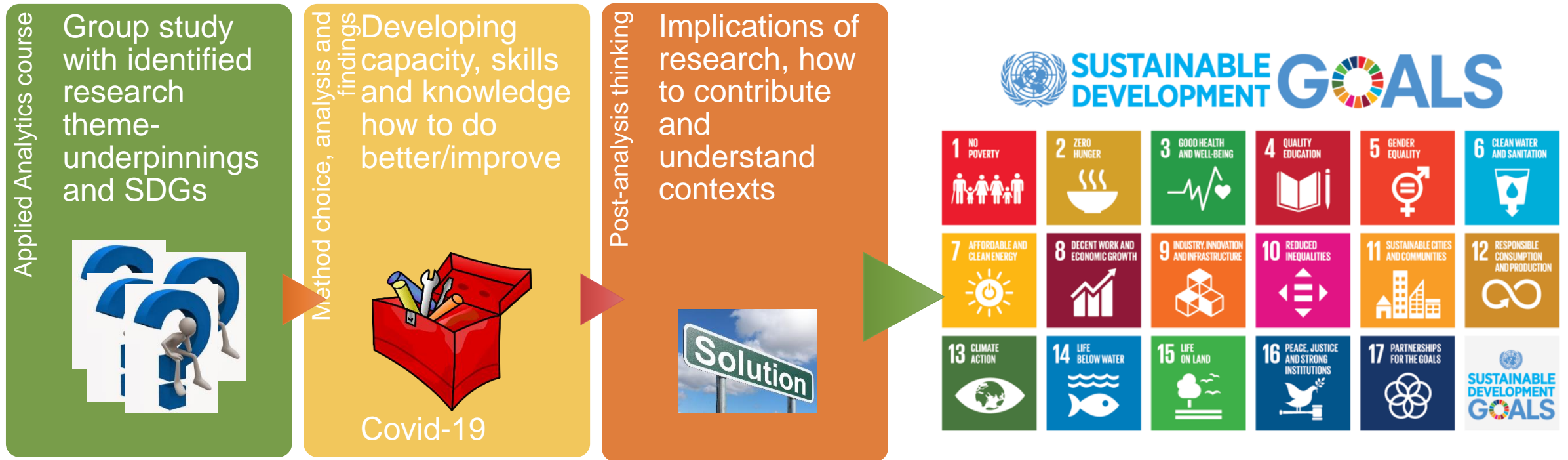
Student team contributors: Brandon Beach, Nicolas Maulsoff and Milena Tergolino (Applied Analytics course)

Brandon Beach

MBA - Innovation & Business Development, SDU (2021)
BSc. Economics and Business Administration, SDU (2019)

The LEGO Group, Student Worker in the Robotic Process Automation Center of Excellence

Remote learning in higher education and its implication on knowledge dissemination- Empowering students in a course

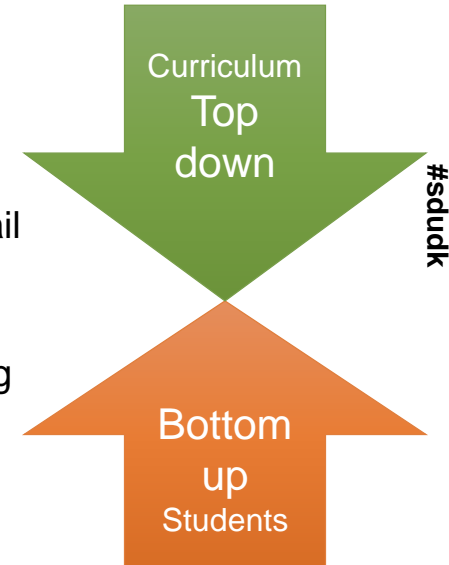


Empowerment via learning environment

Situation assessment:

- **What do you study:** Freedom to identify themes, special viewpoints, methods
- **How do you study:** From classic classroom to remote methods; BB, Zoom lectures and recordings, Youtube, email communication, student group work with diverse methods, e.g. Whatsapp, Teams. Co-development of urgency solutions
- **Why do you study:** Fuelled by the purpose, appreciation of group engagement, motivation to contribute, preparing for the future and acquiring the toolset to take on a changing world

Student resilience and intra-group interaction



Teacher perspective: COVID 19/remote learning effects

Inequality, inclusion and gender: SUSTAINABLE DEVELOPMENT GOALS

Students from less privileged countries can participate from home via internet, reduction of distance/costs of study

Zoom live and recorded lectures help many female students with children to study regularly

Students with disabilities and mental disorders can participate as is suitable to them

Students with different personalities/learning types can find their way of participating e.g. using chat function or sharing links in BB discussion board

Environmental sustainability: SUSTAINABLE DEVELOPMENT GOALS

Commuting students and teachers reduce carbon footprint notably, e.g. one online course can reduce 8,1 tons of CO2

A Student's Retrospective on E-Learning



Keep it Going!

- Encourage student collaboration in and outside of lectures
- Try & experiment – we enjoy different and unique approaches
- Searching for improvements & forward-looking thinking to increase quality and inclusion



Let's Change / Challenge

- The three-hour lecture
- Breakout rooms & other lecture activities – when they work (and don't)
- Scheduling – challenge traditional constraints
- To record or not to record?



Take Action

- Build an online community – One which empowers teachers and students
- Use your best resource – Students! (Go beyond the questionnaire)
- Preparing for the Future: The role of Hybrid Learning in Universities