



University of Southern Denmark

Broad-spectrum physical fitness benefits of recreational football a systematic review and meta-analysis

Milanović, Zoran; Pantelić, Saša; Čović, Nedim; Sporiš, Goran; Mohr, Magni; Krustrup, Peter

Published in:
British Journal of Sports Medicine

DOI:
[10.1136/bjsports-2017-097885](https://doi.org/10.1136/bjsports-2017-097885)

Publication date:
2019

Document version
Final published version

Document license
CC BY-NC

Citation for pulished version (APA):
Milanović, Z., Pantelić, S., Čović, N., Sporiš, G., Mohr, M., & Krustrup, P. (2019). Broad-spectrum physical fitness benefits of recreational football: a systematic review and meta-analysis. *British Journal of Sports Medicine*, 53(15), 926-939. <https://doi.org/10.1136/bjsports-2017-097885>

Terms of use

This work is brought to you by the University of Southern Denmark through the SDU Research Portal. Unless otherwise specified it has been shared according to the terms for self-archiving. If no other license is stated, these terms apply:

- You may download this work for personal use only.
- You may not further distribute the material or use it for any profit-making activity or commercial gain
- You may freely distribute the URL identifying this open access version

If you believe that this document breaches copyright please contact us providing details and we will investigate your claim. Please direct all enquiries to puresupport@bib.sdu.dk



OPEN ACCESS

Broad-spectrum physical fitness benefits of recreational football: a systematic review and meta-analysis

Zoran Milanović,^{1,2} Saša Pantelić,¹ Nedim Čović,³ Goran Sporiš,⁴ Magni Mohr,^{5,6,7} Peter Krstrup^{7,8}

► Additional material is published online only. To view please visit the journal online (<http://dx.doi.org/10.1136/bjsports-2017-097885>).

¹Faculty of Sport and Physical Education, University of Nis, Nis, Serbia

²Science and Research Centre Koper, Institute for Kinesiology Research, Koper, Slovenia

³Faculty of Sport and Physical Education, University of Sarajevo, Sarajevo, Bosnia and Herzegovina

⁴Faculty of Kinesiology, University of Zagreb, Zagreb, Croatia

⁵Center of Health and Performance, Department of Food and Nutrition and Sport Science, University of Gothenburg, Gothenburg, Sweden

⁶Centre of Health Science, Faculty of Health Sciences, University of the Faroe Islands, Torshavn, Faroe Islands

⁷Department of Sports Science and Clinical Biomechanics, SDU Sport and Health Sciences Cluster (SHSC), Faculty of Health Sciences, University of Southern Denmark, Odense, Denmark

⁸Sport and Health Sciences, College of Life and Environmental Sciences, University of Exeter, Exeter, UK

Correspondence to

Dr Zoran Milanović, Faculty of Sport and Physical Education, University of Niš, Niš 18000, Serbia; zooro_85@yahoo.com

Accepted 31 December 2017



To cite: Milanović Z, Pantelić S, Čović N, et al. *Br J Sports Med* Epub ahead of print: [please include Day Month Year]. doi:10.1136/bjsports-2017-097885

ABSTRACT

Background A previous meta-analysis showed that maximal oxygen uptake increased by 3.51 mL/kg/min (95% CI 3.07 to 4.15) during a recreational football programme of 3–6 months in comparison with continuous moderate-intensity running, strength training or a passive control group. In addition, narrative reviews have demonstrated beneficial effects of recreational football on physical fitness and health status.

Objective The purpose of this systematic review and meta-analysis was to evaluate the magnitude of effects of recreational football on blood pressure, body composition, lipid profile and muscular fitness with reference to age, gender and health status.

Design Systematic review and meta-analysis.

Data sources MEDLINE, PubMed, SPORTDiscus, Web of Science, Cumulative Index to Nursing and Allied Health Literature (CINAHL) and Google Scholar were searched prior to 1 February 2017. In addition, Google Scholar alerts were set up in January 2012 to identify potential papers with the following key terms: recreational football, recreational soccer, street football and street soccer.

Eligibility criteria for selecting studies

Randomised and matched controlled trials with participants allocated to a recreational football group or any other type of exercises or passive control group were included. Training programmes had to last at least 2 weeks to meet the inclusion criteria. The primary outcome measures were blood pressure, resting heart rate, body composition, muscular fitness, and blood lipids and glucose tolerance. A total of 31 papers met the inclusion criteria and were included.

Results The effect of recreational football on systolic blood pressure (SBP) versus no-exercise controls was *most likely extremely largely beneficial* (effect size (ES)=4.20 mm Hg; 95% CI 1.87 to 6.53). In addition, a *most likely very large beneficial* (ES=3.89 mm Hg; 95% CI 2.33 to 5.44) effect was observed for diastolic blood pressure (DBP), when compared with non-active groups. Furthermore, a *most likely extremely large beneficial* effect was shown for SBP and DBP in participants with mild hypertension (11 and 7 mm Hg decrease, respectively) and participants with prehypertension (10 and 7 mm Hg decrease, respectively). Meta-analysis of recreational football determined the impact on resting heart rate as *most likely extremely largely beneficial* (ES=6.03 beats/min; 95% CI 4.43 to 7.64) when compared with non-active groups. The observed recreational football effect on fat mass was *most likely largely beneficial* (ES=1.72 kg; 95% CI 0.86 to 2.58) and the effect on countermovement jump (CMJ) performance

was *most likely very largely beneficial* (ES=2.27 cm; 95% CI 1.29 to 3.25) when compared with non-active groups. *Possibly beneficial* decreases were found in low-density lipoprotein levels (ES=0.21 mmol/L; 95% CI 0.06 to 0.36). *Possibly largely beneficial* effect was observed for DBP in comparison with continuous running training. *Small harmful* and *unclear* results were noted for SBP, fat and lean body mass, body mass index, as well as muscular fitness when compared with running and Zumba training.

Conclusion The present meta-analysis demonstrated multiple broad-spectrum benefits of recreational football on health-related physical fitness compared with no-exercise controls, including improvements in blood pressure, resting heart rate, fat mass, low-density lipoprotein cholesterol and CMJ performance. Additionally, recreational football is efficient and effective as Zumba and continuous running exercise regimens with highlighted social, motivational and competitive components.

INTRODUCTION

It is now well established that physical fitness is a strong mortality predictor and that physical training is a cornerstone in the prevention and treatment of lifestyle diseases including hypertension, type 2 diabetes and osteoporosis.^{1–4} Conventional training approaches such as high-intensity interval training, endurance running and strength training are well known to be effective in improving cardiovascular, metabolic and musculoskeletal fitness, respectively.^{5–8} However, participation in multifaceted exercise training may be effective in simultaneously stimulating all three main fitness areas, thereby providing broad-spectrum fitness and health benefits.^{2–5} Over the last decade, there has been growing evidence that recreational football is precisely this type of multifaceted exercise training. Small-sided football training for untrained health adults across the lifespan as well as several patient groups have been shown to elicit average heart rates of 80%–85% of maximal heart rate (HRmax) during 60 min sessions, with 15%–50% of total training time in the highest aerobic training zone above 90% HRmax.⁶ In addition, small-sided football training comprises multiple strength training elements, with more than 100 high-intensity runs and hundreds of specific intense actions such as dribbles, shots, tackles, turns and jumps in 60 min training sessions.⁷ Many individual studies have reported recreational

football to be an effective type of physical activity with positive effects on hypertension in middle-aged men⁸ and women,⁹ on cardiovascular and metabolic responses in patients with type 2 diabetes,¹⁰ on heart function,¹¹ on physical capacity,¹² on muscle mass in patients with prostate cancer¹¹ and on bone mineral density and mass,¹³ with positive effects in various age categories and populations on cardiorespiratory fitness, muscular fitness, health profile and physical capacity,⁵ and three narrative reviews have confirmed the effects of recreational football training on cardiovascular, metabolic and musculoskeletal fitness regardless of age and health status.^{9,10,14} To date, only two systematic reviews and meta-analyses have evaluated the effects of recreational football, and these had a predominant focus on aerobic fitness. Milanović and colleagues⁶ meta-analysed 17 studies and reported that recreational football produces large improvements in maximal oxygen consumption (VO₂max) compared with strength training and no-exercise controls, while a moderate effect size (ES) was observed in comparison with continuous endurance running. Likewise, Oja *et al*¹⁵ showed significant positive effects on maximal oxygen consumption and resting heart rate (RHR) compared with a no-exercise control, with borderline significance for fat percentage. The effects of recreational football on broad-spectrum fitness and health benefits, however, have yet to be meta-analysed.

The purpose of this systematic review and meta-analysis was therefore to carry an up-to-date evaluation of the broad-spectrum health-related fitness effects of recreational football training in relation to age and health status, with a specific focus on the magnitude of effects on (1) blood pressure, (2) RHR, (3) body composition, (4) muscular fitness evaluated as jump performance, and (5) blood lipids and glucose tolerance.

METHODS

Search strategy and study selection

The search and study selection strategy applied in this systematic review and meta-analysis was similar to that of a previous published paper by Milanović *et al*.⁶ All procedures relevant for papers' identification were carried out in accordance with the Preferred Reporting Items for Systematic Reviews and Meta-Analyses (PRISMA) statement.¹⁶ Computerised literature searches were conducted on the following databases: MEDLINE, PubMed, SPORTDiscus, Web of Science, Cumulative Index to Nursing and Allied Health Literature (CINAHL) and Google Scholar. A structured search included papers published prior to 1 February 2017. In addition, Google Scholar alerts were set up in January 2012 to identify potential papers with the following key terms: recreational football, recreational soccer, street football and street soccer. A manual search was performed covering the areas of recreational football/soccer, recreational physical activity, recreational small-sided games and physical fitness using the following key terms and strings, either singly or in combination: ('recreational small-sided games' (All Fields) OR 'recreational football' (All Fields) OR 'recreational soccer' (All Fields) OR 'street football' (All Fields) or 'street soccer' (All Fields)) AND ('effect' (All Fields) OR 'impact' (All Fields) OR 'influence' (All Fields)) AND ('physical fitness' (Mesh) OR 'health status' (Mesh) OR 'blood pressure' (Mesh) OR 'countermovement jump' (Mesh) OR 'CMJ' (Mesh) OR 'body composition' (Mesh) OR 'body mass index' (Mesh) OR 'lean body mass' (Mesh) OR 'body mass' (Mesh) OR 'resting heart rate' (Mesh) OR 'blood lipid' (Mesh) OR 'glucose tolerance' (Mesh)) AND ('randomised controlled trial' (All fields) OR 'randomized controlled trial' (Publication Type)).

The study selection process is shown in figure 1. Two independent reviewers (ZM and NČ) performed the literature search, identification, screening, quality assessment and data extraction. First, the titles were initially screened by the reviewers during the electronic searches to assess suitability of papers, and all papers beyond the scope of this meta-analysis were excluded. Second, abstracts were assessed using predetermined inclusion and exclusion criteria. Third, the full texts of the remaining papers that met the inclusion criteria were retrieved for inclusion in the ongoing procedure and reviewed by the two reviewers to reach a final decision on inclusion in the meta-analysis. Finally, reference lists from retrieved manuscripts were also examined for any other potentially eligible papers. Any disagreements between the reviewers were resolved by consensus or arbitration by a third reviewer (GS). If full text of any paper was not available, the corresponding author was contacted by mail or ResearchGate. Inclusion and exclusion criteria were considered study characteristics and report characteristics (table 1).

Type of study and participants

Randomised and matched controlled trials were included in meta-analysis without any restriction on age and health status of participants.

Type of interventions

Training programmes had to last at least 2 weeks, with participants allocated to a recreational football group and any other type of exercise or a passive control group. Studies with unbalanced diet in groups were excluded from analysis.

Type of outcome measure

The primary outcome measures for the meta-analysis were blood pressure, RHR, body composition, muscular fitness evaluated as jump performance, and blood lipids and glucose tolerance.

Data extraction

The Cochrane Consumers and Communication Review Group's standardised protocol for data extraction was used to extract (1) study characteristics including author(s), title and year of publication; (2) participant information such as sample size, age, health status and gender; (3) description of the training intervention, including types of exercise, intensity, duration and frequency; and (4) study outcomes, including the following physical fitness components: systolic and diastolic blood pressure, RHR, body mass, body mass index (BMI), lean body mass (LBM), fat mass, and metabolic responses including low-density and high-density lipoproteins (LDL and HDL), total cholesterol, triglycerides, fasting blood glucose and glucose tolerance, and muscular fitness (see supplementary file 1 and supplementary file 2). When needed, pre-BMI and post-BMI values were manually calculated. In most of the studies, mean and SD (also computed when dispersion was expressed as SEM) prevalences and postvalues were reported, while correlation was not reported. Accordingly, in these instances the correlation value was set at 0.5, as used previously by Bacon *et al*.¹⁷ Graph digitiser software (DigitizeIt, Braunschweig, Germany) was used to obtain data values in studies where only plots were published. Data extraction was undertaken by ZM, while NČ checked the extracted data for accuracy and completeness. Disagreements were resolved by consensus or by GS. The reviewers were not blinded to authors, institutions or manuscript journals. The summary of findings with appropriate quality of evidence table was created using the Grading of Recommendations, Assessment, Development

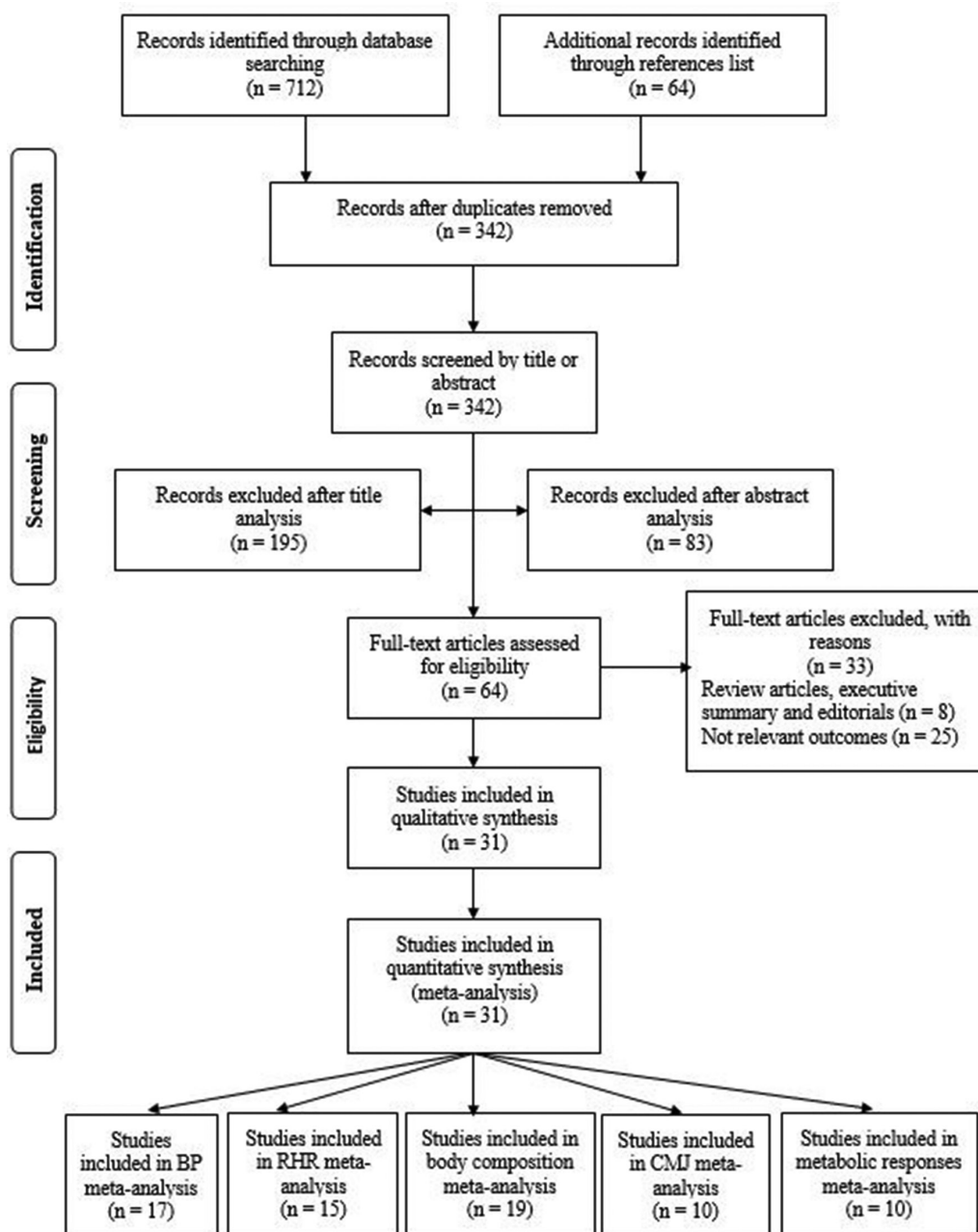


Figure 1 Flow chart diagram of the study selection; BP, blood pressure; CMJ, countermovement jump; RHR, resting heart rate.

and Evaluations (GRADE) approach.¹⁸ The methodological criteria were dependent on five primary domains (risk of bias, inconsistency, indirectness, precision and publication bias), as well as the overall quality of the evidence (high, moderate, low or very low).

Assessment of risk of bias

Risk of bias was evaluated according to the PRISMA recommendation.¹⁹ Physiotherapy Evidence Database (PEDro) scale was used to determine the quality of the studies and potential risk of bias. Two independent reviewers assessed the quality and risk of bias using checklists. Agreement between the two reviewers was assessed using k statistics for full-text screening and rating of relevance and risk of bias. In the event of disagreement about the risk of bias, the third reviewer checked the data and took

the final decision on it. The k agreement rate between reviewers was $k=0.94$.

Statistical analysis

Difference in means and 95% CIs were calculated for the included studies. The I^2 measure of inconsistency was used to examine between-study variability, with values greater than 50% considered indicative of high heterogeneity.²⁰ This statistic, expressed as a percentage between 0 and 100, can be interpreted as the percentage of heterogeneity in the system or, basically, the amount of total variation accounted for by the between-studies variance.²¹ Publication bias was assessed by examining asymmetry of funnel plots using Egger's test, and $P<0.10$ was considered a significant publication bias. Pooled estimates of the effect of recreational football on blood pressure, RHR, body

Table 1 Inclusion and exclusion criteria

	Inclusion criteria	Exclusion criteria
Type of study	English language Longitudinal design evaluating interventions Randomised controlled trials Matched controlled trials	Non-randomised Uncontrolled Cross-section studies Case study
Type of participants	Sedentary Untrained Recreational Non-athlete Patients Both genders Any health status	Mixed gender
Type of intervention	Training programmes >2 weeks Recreational football/soccer Continuous endurance running Strength training Zumba training No-exercise (control) group	Studies incorporating diet Number of training sessions <1 per week
Type of outcome measure	Systolic and diastolic blood pressure Resting heart rate Body mass index Body mass Lean body mass Fat mass Countermovement jump Low-density lipoprotein, high-density lipoprotein and total cholesterol Fasting blood glucose and glucose tolerance	Any other physical fitness parameters

composition, metabolic responses and muscular fitness using ES were obtained using random-effects models. ES values were classified as follows: <0.2 trivial, 0.2–0.6 small, 0.6–1.2 moderate, 1.2–2.0 large, and >2.0 very large and >4.0 extremely large.²² The precision of the pooled effect was reported as a 95% CI and as probabilities that the true value of the effect was trivial, beneficial or harmful in relation to threshold values for benefit and harm. The chance of the true effect being trivial, beneficial or harmful was then interpreted using the following scale: 25%–75%, possibly; 75%–95%, likely; 95%–99.5%, very likely; and >99.5%, most likely.¹⁷ These probabilities were then used to make a qualitative probabilistic inference about the overall effect.²¹ Five moderator variables with appropriate levels were selected for additional analysis of all outcomes: (1) type of control group (no-exercise, continuous running, strength training and Zumba groups); (2) gender (male and female); (3) age (18–45, 45–65 or >65 years); (4) length of training intervention (≤ 12 weeks and >12 weeks); and (5) training frequency (≤ 2 weeks and >2 weeks). In addition, the type of hypertension was used as a moderator for systolic blood pressure (SBP) and diastolic blood pressure (DBP) outcome where levels were normotensive, mild-hypertensive and hypertensive. All statistical analyses were conducted using Comprehensive Meta-analysis V.2 software (Biostat, Englewood, New Jersey, USA). $P < 0.05$ was considered statistically significant.

RESULTS

Study selection and characteristics

A total of 712 papers were identified across the databases in the initial search and an additional 64 papers were selected on the basis of their references. After duplications were removed, 342

papers remained. Based on a screening of the title and abstract, 278 articles were discarded (195 excluded after title analysis, 83 excluded after abstract analysis). The full text of the 64 remaining papers was assessed in more detail for eligibility. Each paper was carefully read and coded for study characteristics, participant information, description of the training intervention and study outcomes. Thirty-three papers did not meet the inclusion criteria, while 31 papers that met the inclusion criteria were included in the systematic review and meta-analysis. There were 17, 15, 19 and 10 papers included in the meta-analysis of blood pressure, RHR, body composition and muscular fitness, respectively (table 2). Additionally, 10 papers were included for metabolic response comparisons (table 3).

All eligible studies were controlled trials, published in English from the beginning of 2009 until February 2017. In order to perform meta-analysis from 31 papers that met the inclusion criteria, 17 studies^{5 8 9 23–36} featured data changes in blood pressure, 15 covered RHR,^{5 8 9 23–25 29–35 37} 19 papers^{2 5 9–11 24–32 34–39} related to body composition, while 10 studies^{2 11 12 24 38–43} provided sufficient data for muscular fitness. Metabolic responses data extraction featured 10 studies for plasma LDL and HDL,^{5 9 10 24–26 30 31 35 45} 8 studies for plasma triglycerides,^{9 10 24–26 30 35 45} 9 for total cholesterol^{5 9 10 24–26 30 35 45} and fasting blood glucose,^{10 24–26 30 31 35 37 45} and 5 for glucose tolerance^{10 12 24 30 31 35} (figure 1).

Football training intervention

Recreational football training interventions were composed of a 10–15 min warm-up period followed by competitive game formats of 4 vs 4, 5 vs 5, 6 vs 6, 7 vs 7, and 9 vs 9 without specific tasks. Pitch dimensions ranged from 20×30 m to 45×65 m covered with grass and artificial grass surfaces or asphalt as well as indoor surfaces. Authors did not report the playing role of the goalkeeper or the specific rules used during matches. All subjects trained for between 10 and 72 weeks. The most common intervention periods were 12 weeks^{2 5 11 23 24 27 29 41} and 16 weeks.^{12 28 37} Total time in the high aerobic intensity zone (>90% HRmax) ranged from one-tenth to one-third of overall exercise time.

Study outcomes for blood pressure

The meta-analysed effects of recreational football on SBP and DBP were similar (table 4). The recreational football effect on SBP when compared with no-exercises controls was *most likely extremely largely beneficial*. A *most likely extremely large beneficial* (ES=3.89 mm Hg; 95% CI 2.33 to 5.44) effect on DBP was observed for recreational football compared with no-exercise groups. A *most likely extremely large beneficial* ES was observed in the group of participants with mild hypertension (decrease of 10.8 and 6.8 mm Hg for SBP and DBP in football group and 4 and 0 mm Hg in controls). In the prehypertensive group, the observed effects were *most likely extremely largely beneficial* (ES=5.52 mm Hg; 95% CI 3.51 to 7.54; decrease of 7.3 and 2.0 mm Hg for football group and controls) and *likely extremely largely beneficial* (ES=4.36 mm Hg; 95% CI 0.02 to 8.70; decrease of 9.5 and 4.7 mm Hg for football group and controls) for DBP and SBP. In the normotensive group, the observed effects were *possibly largely beneficial* for both SBP and DBP (ES=1.80 mm Hg; 95% CI –0.04 to 3.65 and ES=1.21 mm Hg; 95% CI –0.11 to 2.32).

When the results were analysed separately for men and women, the meta-analysed effect of recreational football on SBP was *possibly very largely beneficial* and *very likely extremely largely beneficial* for men and women (ES=2.25 mm Hg; 95% CI

Table 2 Systematic review and characteristics of included studies selected for meta-analysis and relevant outcomes

Study	Population	Training programme										Outcomes									
		Status	Gender	Age (year)	Sample size	Dropout (n)	Duration (weeks)	Comparison group (n)	Average intensity (%HRmax)	Days/week	Session (min)	SBP (mm Hg)	DBP (mm Hg)	RHR (bpm)	BW (kg)	LBM (kg)	FM (kg)	BMI (kg/m ²)	CMJ (cm)		
Andersen et al ¹⁰	Type II diabetes	M	49±2	21	3	24	CG (n=9)	83±2	1.5±0.9	60	FG:12 ↓ CG:nc	FG:7 ↓* CG:nc	FG:12 ↓* CG:1 ↑	FG:1.1 ↓* CG:0.6 ↑	FG:0.7 ↑ CG:0.8 ↑	FG:1.7 ↓* CG:0.1 ↓↑	FG:0.3 ↓ CG:0.3 ↑				
Andersen et al ²³	Mild to moderate hypertension	M	31–54	22	3	12	CG (n=9)	83	1.7±0.2	60	FG:6 ↓* RG:5 ↓* CG:nc	FG:4 ↓* CG:nc	FG:8 ↓* CG:4 ↓	FG:6 ↓* CG:nc	FG:4 ↓* CG:nc	FG:12 ↓* CG:6 ↓	FG:4 ↓* CG:nc	FG:8 ↓* CG:3 ↑	FG:1.8 ↑ RG:1.7 ↑ CG:1.2 ↓		
Andersen et al ²⁸	Healthy untrained	F	36.5±8.2	47	0	16	RG (n=18) CG (n=10)	82	1.8	60	FG:6 ↓* RG:5 ↓* CG:nc	FG:4 ↓* CG:nc	FG:8 ↓* CG:4 ↓	FG:6 ↓* CG:nc	FG:4 ↓* CG:nc	FG:12 ↓* CG:6 ↓	FG:4 ↓* CG:nc	FG:8 ↓* CG:3 ↑	FG:1.8 ↑ RG:1.7 ↑ CG:1.2 ↓		
Andersen et al ⁶	Untrained hypertensive	M	31–54	31	10	26	CG (n=11)	Not reported	1.7±0.1	60	FG:12 ↓* CG:6 ↓	FG:8 ↓* CG:4 ↓	FG:8 ↓* CG:3 ↑	FG:12 ↓* CG:6 ↓	FG:8 ↓* CG:4 ↓	FG:8 ↓* CG:3 ↑	FG:8 ↓* CG:4 ↓	FG:8 ↓* CG:3 ↑	FG:1.8 ↑ RG:1.7 ↑ CG:1.2 ↓		
Andersen et al ¹³	Untrained elderly	M	63–74	26	1	16	STG (n=9) CG (n=8)	84±1	1.6±0.1	60	FG:2 ↓ ZG:nc CG:nc	FG:nc ZG:nc CG:nc	FG:nc ZG:nc CG:nc	FG:2 ↓ ZG:nc CG:nc	FG:2 ↓ ZG:nc CG:nc	FG:2 ↓ ZG:nc CG:nc	FG:2 ↓ ZG:nc CG:nc	FG:2 ↓ ZG:nc CG:nc	FG:2 ↓ ZG:nc CG:nc	FG:1.8 ↑ RG:1.7 ↑ CG:1.2 ↓	
Barone et al ²⁷	Healthy hospital employees	F	25–65	118	23	12	ZG (n=30) CG (n=34)	78.3±4.4	2.4±0.5	60	FG:2 ↓ ZG:nc CG:nc	FG:nc ZG:nc CG:nc	FG:nc ZG:nc CG:nc	FG:2 ↓ ZG:nc CG:nc	FG:2 ↓ ZG:nc CG:nc	FG:2 ↓ ZG:nc CG:nc	FG:2 ↓ ZG:nc CG:nc	FG:2 ↓ ZG:nc CG:nc	FG:2 ↓ ZG:nc CG:nc	FG:1.8 ↑ RG:1.7 ↑ CG:1.2 ↓	
Barone et al ¹⁶	Healthy hospital employees	F	25–65	118	41	40	ZG (n=30) CG (n=34)	78.6±3.2	12 weeks: 2.4±0.5 28 weeks: 1.2±0.2	60	FG:nc ZG:3 ↓ CG:nc	FG:nc ZG:nc CG:nc	FG:nc ZG:nc CG:nc	FG:nc ZG:3 ↓ CG:nc	FG:nc ZG:nc CG:nc	FG:nc ZG:nc CG:nc	FG:nc ZG:nc CG:nc	FG:nc ZG:nc CG:nc	FG:nc ZG:nc CG:nc	FG:1.8 ↑ RG:1.7 ↑ CG:1.2 ↓	
Connolly et al ²⁸	Healthy inactive	F	20–45	66	22	16	VFG (n=21) CG (n=24)	85±5	2.0	15	FG:2 ↑ VFG:3 ↓ CG:1 ↑	FG:1 ↑ VFG:1 ↓ CG:nc	FG:4 ↓ VFG:2 ↓ CG:4 ↓	FG:0.7 ↓ VFG:0.2 ↑ CG:nc	FG:0.7 ↑ VFG:0.1 ↑ CG:nc	FG:1.4 ↓* VFG:0.1 ↑ CG:nc	FG:0.2 ↓ VFG:0.1 ↑ CG:nc	FG:0.2 ↓ VFG:0.1 ↑ CG:nc	FG:0.2 ↓ VFG:0.1 ↑ CG:nc	FG:1.8 ↑ RG:1.7 ↑ CG:1.2 ↓	
Helge et al ⁴⁰	Healthy untrained	F	36.5±7.7	37	50	14	RG (n=16) CG (n=9)	83	1.8±0.3	60	FG:6 ↓* RG:5 ↓* CG:nc	FG:nc ZG:nc CG:nc	FG:6 ↓* RG:5 ↓* CG:nc	FG:6 ↓* RG:5 ↓* CG:nc	FG:6 ↓* RG:5 ↓* CG:nc	FG:6 ↓* RG:5 ↓* CG:nc	FG:6 ↓* RG:5 ↓* CG:nc	FG:6 ↓* RG:5 ↓* CG:nc	FG:6 ↓* RG:5 ↓* CG:nc	FG:1.8 ↑ RG:1.7 ↑ CG:1.2 ↓	
Helge et al ¹³	Homeless	M	26–50	55	22	12	CG (n=10)	Not reported	2.2±0.7	Not reported	FG:6 ↓* RG:5 ↓* CG:nc	FG:nc ZG:nc CG:nc	FG:6 ↓* RG:5 ↓* CG:nc	FG:6 ↓* RG:5 ↓* CG:nc	FG:6 ↓* RG:5 ↓* CG:nc	FG:6 ↓* RG:5 ↓* CG:nc	FG:6 ↓* RG:5 ↓* CG:nc	FG:6 ↓* RG:5 ↓* CG:nc	FG:6 ↓* RG:5 ↓* CG:nc	FG:1.8 ↑ RG:1.7 ↑ CG:1.2 ↓	
Jakobsen et al ⁴¹	Healthy untrained	M	21–45	49	0	12	STG (n=8) HIRC (n=7) RG (n=9) CG (n=10)	80	2.3	55	FG:11 ↓* RG:7 ↓* CG:7 ↓	FG:4 ↓ RG:3 ↓ CG:2 ↓	FG:4 ↓ RG:3 ↓ CG:2 ↓	FG:11 ↓* RG:7 ↓* CG:7 ↓	FG:4 ↓ RG:3 ↓ CG:2 ↓	FG:4 ↓ RG:3 ↓ CG:2 ↓	FG:4 ↓ RG:3 ↓ CG:2 ↓	FG:4 ↓ RG:3 ↓ CG:2 ↓	FG:4 ↓ RG:3 ↓ CG:2 ↓	FG:4.2 ↑* FG:nc HIRC:nc RG:nc CG:nc	
Knoeff-Lenzin et al ²⁴	Untrained mild hypertension	M	20–45	104	57	12	RG (n=15) CG (n=17)	79.9±4.5	2.4±0.2	59±2	FG:9 ↓* RG:6 ↓* CG:7 ↓	FG:4 ↓ RG:3 ↓ CG:2 ↓	FG:4 ↓ RG:3 ↓ CG:2 ↓	FG:9 ↓* RG:6 ↓* CG:7 ↓	FG:4 ↓ RG:3 ↓ CG:2 ↓	FG:4 ↓ RG:3 ↓ CG:2 ↓	FG:9 ↓* RG:6 ↓* CG:7 ↓	FG:4 ↓ RG:3 ↓ CG:2 ↓	FG:4 ↓ RG:3 ↓ CG:2 ↓	FG:4.2 ↑* FG:nc HIRC:nc RG:nc CG:nc	
Krustup et al ¹⁰	Healthy untrained	F	19–47	28	6	68	RG (n=8) CG (n=7)	81±1	1.78	60	FG:7 ↓ RG:7 ↓ CG:2 ↓	FG:4 ↓ RG:3 ↓ CG:2 ↓	FG:4 ↓ RG:3 ↓ CG:2 ↓	FG:7 ↓* RG:7 ↓* CG:1 ↓	FG:1.4 ↓* RG:1.3 ↓* CG:0.1 ↓	FG:1.4 ↓* RG:1.3 ↓* CG:0.1 ↓	FG:1.4 ↓* RG:1.3 ↓* CG:0.1 ↓	FG:1.4 ↓* RG:1.3 ↓* CG:0.1 ↓	FG:1.4 ↓* RG:1.3 ↓* CG:0.1 ↓	FG:1.8 ↑ RG:1.7 ↑ CG:1.2 ↓	
Krustup et al ²⁷	Healthy untrained	F	19–47	53	12	16	RG (n=18) CG (n=14)	83	1.8	60	FG:7 ↓ RG:6 ↓ CG:nc	FG:4 ↓ RG:3 ↓ CG:nc	FG:4 ↓ RG:3 ↓ CG:nc	FG:7 ↓* RG:7 ↓* CG:1 ↓	FG:1.4 ↓* RG:1.3 ↓* CG:0.1 ↓	FG:1.4 ↓* RG:1.3 ↓* CG:0.1 ↓	FG:1.4 ↓* RG:1.3 ↓* CG:0.1 ↓	FG:1.4 ↓* RG:1.3 ↓* CG:0.1 ↓	FG:1.4 ↓* RG:1.3 ↓* CG:0.1 ↓	FG:1.8 ↑ RG:1.7 ↑ CG:1.2 ↓	
Krustup et al ⁶	Healthy untrained	M	20–43	36	4	12	RG (n=12) CG (n=11)	82	2.3	60	FG:8 ↓* RG:8 ↓* CG:nc	FG:5 ↓* RG:5 ↓* CG:nc	FG:5 ↓* RG:5 ↓* CG:nc	FG:8 ↓* RG:8 ↓* CG:nc	FG:5 ↓* RG:5 ↓* CG:nc	FG:5 ↓* RG:5 ↓* CG:nc	FG:8 ↓* RG:8 ↓* CG:nc	FG:5 ↓* RG:5 ↓* CG:nc	FG:5 ↓* RG:5 ↓* CG:nc	FG:1.8 ↑ RG:1.7 ↑ CG:1.2 ↓	
Krustup et al ²¹	Untrained with mild hypertension	M	30–55	43	10	26	CG (n=11)	85±7	1.7±0.5	60	FG:13 ↓* CG:8 ↓*	FG:8 ↓* CG:3 ↓*	FG:8 ↓* CG:3 ↓*	FG:13 ↓* CG:8 ↓*	FG:8 ↓* CG:3 ↓*	FG:8 ↓* CG:3 ↓*	FG:13 ↓* CG:8 ↓*	FG:8 ↓* CG:3 ↓*	FG:8 ↓* CG:3 ↓*	FG:1.8 ↑ RG:1.7 ↑ CG:1.2 ↓	
Milanović et al ⁶	Non-athletic men	M	20–40	69	5	12	RG (n=21) CG (n=23)	80	3.0	60	FG:5.9 ↓* RG:5.7 ↓* CG:2.6 ↑*	FG:6.1 ↑* RG:5.8 ↑* CG:2.0 ↑*	FG:6.1 ↑* RG:5.8 ↑* CG:2.0 ↑*	FG:5.9 ↓* RG:5.7 ↓* CG:2.6 ↑*	FG:6.1 ↑* RG:5.8 ↑* CG:2.0 ↑*	FG:6.1 ↑* RG:5.8 ↑* CG:2.0 ↑*	FG:6.1 ↑* RG:5.8 ↑* CG:2.0 ↑*	FG:6.1 ↑* RG:5.8 ↑* CG:2.0 ↑*	FG:6.1 ↑* RG:5.8 ↑* CG:2.0 ↑*	FG:5.4 ↑* RG:5.3 ↑* CG:0.2 ↓	
Mohr et al ⁶	Sedentary with mild hypertension	F	40–50	42	1	15	CG (n=20)	80.5±1.1	3.0±0.1	60	FG:12 ↓* CG:nc	FG:6 ↓* CG:nc	FG:6 ↓* CG:nc	FG:12 ↓* CG:nc	FG:6 ↓* CG:nc	FG:6 ↓* CG:nc	FG:12 ↓* CG:nc	FG:6 ↓* CG:nc	FG:6 ↓* CG:nc	FG:6 ↓* CG:nc	FG:5.4 ↑* RG:5.3 ↑* CG:0.2 ↓
Mohr et al ²²	Premenopausal with mild hypertension	F	40–52	83	0	15	HITS (n=21) MODS (n=21) CG (n=21)	-80	3.0±0.5	60	FG:12 ↓* HITS:6 ↓* MODS:4 ↓* CG:1 ↓	FG:6 ↓* HITS:2 ↓* MODS:5 ↓* CG:1 ↓	FG:6 ↓* HITS:2 ↓* MODS:5 ↓* CG:1 ↓	FG:12 ↓* HITS:6 ↓* MODS:4 ↓* CG:1 ↓	FG:6 ↓* HITS:2 ↓* MODS:5 ↓* CG:1 ↓	FG:6 ↓* HITS:2 ↓* MODS:5 ↓* CG:1 ↓	FG:6 ↓* HITS:2 ↓* MODS:5 ↓* CG:1 ↓	FG:6 ↓* HITS:2 ↓* MODS:5 ↓* CG:1 ↓	FG:6 ↓* HITS:2 ↓* MODS:5 ↓* CG:1 ↓	FG:6 ↓* HITS:2 ↓* MODS:5 ↓* CG:1 ↓	FG:5.4 ↑* RG:5.3 ↑* CG:0.2 ↓
Randers et al ¹⁴	Healthy untrained	M	20–43	22	5	12+52	CG (n=7)	12 weeks: 81 52 weeks: 82	1.8–2.9 0.9–1.6	60	FG:8 ↓* CG:nc	FG:3 ↓ CG:nc	FG:8 ↓* CG:nc	FG:8 ↓* CG:nc	FG:3 ↓ CG:nc	FG:8 ↓* CG:nc	FG:3 ↓ CG:nc	FG:8 ↓* CG:nc	FG:3 ↓ CG:nc	FG:8 ↓* CG:nc	FG:5.4 ↑* RG:5.3 ↑* CG:0.2 ↓

Continued

Table 2 Continued

Study	Population					Training programme				Outcomes								
	Status	Gender	Age (year)	Sample size	Dropout (n)	Duration (weeks)	Comparison group (n)	Average intensity (%HRmax)	Days/week	Session (min)	SBP (mm Hg)	DBP (mm Hg)	RHR (bpm)	BW (kg)	LBM (kg)	FM (kg)	BMI (kg/m ²)	CMJ (cm)
Randers <i>et al</i> ⁴⁵	Homeless	M	27–47	55	23	12	CG (n=10)	82±4	2.8±0.8	60			FG: 4.1* CG: 3.1†	FG: 0.9↓ CG: 0.6†	FG: 1.1†* CG: 0.4†	FG: 1.7↓* CG: 0.6†	FG: 0.3↓ CG: 0.2†	
Schmidt <i>et al</i> ⁴³	Untrained	M	65–75	27	1	52	STG (n=9) CG (n=8)	Not reported	1.7±0.3	60	FG: 0.2↓ STG: 2.1† CG: nc	FG: nc STG: 1.1† CG: nc	FG: 8.4↓* STG: 2.2↓ CG: 2.2↓	FG: 0.6↓ STG: 0.3↓ CG: 1.0†	FG: 0.6↓ STG: 0.9†* CG: 0.4†	FG: 1.8↓ STG: 1.0↓ CG: 0.1↓	FG: 0.8↓* STG: 0.1↓ CG: 0.3†	
Uth <i>et al</i> ⁴¹	Prostate cancer	M	43–74	57	8	12	CG (n=28)	84.6±3.9	1.7±0.1	45–60			FG: 0.2↓ CG: 0.1↓	FG: 0.2↓ CG: 0.1†	FG: 0.9†* CG: 0.1†	FG: 0.2↓ CG: 0.1↓	FG: 0.1↓ CG: 0.1↓	FG: 1.1†* CG: 0.8↓*
Andersen <i>et al</i> ⁴⁴	Healthy elderly	M	63–74	27	1	16+46	STG (n=9) CG (n=8)	~80	1.7±0.3	60			FG: 0.6↓ STG: 0.9†* CG: 0.4†	FG: 2.3↓* STG: 0.3↓ CG: 1.0†	FG: 0.6↓ STG: 0.9†* CG: 0.4†	FG: 1.8↓ STG: 1.0↓ CG: 0.1↓	FG: 0.8↓* STG: 0.1↓ CG: 0.3†	
Barene <i>et al</i> ⁴²	Healthy hospital employees	F	25–63	107		41	ZG (n=37) CG (n=35)	78	2–3	60								FG: nc ZG: 0.3↓ CG: nc
Hammami <i>et al</i> ³⁴	Postpubertal adolescent	M	15.9±0.6	22	0	8	CG (n=11)	84.6	2	30–45	FG: 2† CG: 3†	FG: 3↓ CG: nc	FG: 5↓ CG: 7↓					
Krstrup <i>et al</i> ³⁵	Mildly hypertensive middle-aged	F	45±5	41	10	52	CG (n=12)	~80	2.5±0.4	45–60	FG: 7↓* CG: 3†	FG: 4↓ CG: 4†	FG: 7↓ CG: 3↓	FG: 2.5↓* CG: 0.6†	FG: 2.6†* CG: 1.1†	FG: 3.2↓* CG: 0.2†		
Seabra <i>et al</i> ³⁸	Overweight children	M	8–12	17	0	26	CG (n=8)	78	4	60–90								FG: 7.7†* CG: 0.1↓
Seabra <i>et al</i> ³⁶	Overweight children	M	8–12	90	2	26	TG (n=29) CG (n=30)	78	3	60–90	FG: 0.4† TG: 4.9† CG: 1.4†	FG: 3.9↓ TG: 4.8↓ CG: 1.8†		FG: 0.4↓ TG: 1.5† CG: 1.9†	FG: 1.5†* TG: 1.7†* CG: 1.1†	FG: 1.3↓* TG: 1.7↓* CG: 2.4†*	FG: 0.2↓ TG: 0.1↓ CG: 0.2†	
Sundstrup <i>et al</i> ⁴³	Healthy elderly	M	68.2±3.2	27	2	16+36	STG (n=9) CG (n=8)	~80	2–3	45–60								FG: 5.8†* STG: 5.5†† CG: 2.5†
Uth <i>et al</i> ³⁹	Prostate cancer	M	67±7	57	16	32	CG (n=28)		2–3	45–60								FG: 0.9† CG: 0.1↓

†, * significant increase; †, * significant decrease; ↓, decrease. BMI, body mass index; bpm, beats per minute; BW, body weight; CG, control group; CMJ, countermovement jump; F, female; FG, football group; FM, fat mass; HRG, high-intensity running group; HTS, high-intensity swimming group; HRmax, maximal heart rate; LBM, lean body mass; M, male; MODS, moderate-intensity swimming group; nc, no changes; RG, running group; RHR, resting heart rate; SBP, systolic blood pressure; STG, strength training group; TG, traditional activity group; VFG, vibration strength group; ZG, Zumba group.

Table 3 Systematic review and overall observed effects for metabolic parameters

Study	Population				Training programme				Outcomes							
	Status	Gender	Age (year)	Sample size	Dropout (n)	Duration (weeks)	Comparison group (n)	Average intensity (%HRmax)	Days/week	Session (min)	LDL cholesterol (mmol/L)	HDL cholesterol (mmol/L)	Plasma triglycerides (mmol/L)	Total cholesterol (mmol/L)	Blood glucose (mmol/L)	Glucose tolerance (mmol/L)
Andersen <i>et al</i> ¹⁰	Type II diabetes	M	49±2	21	3	24	CG (n=9)	83±2	1.5±0.9	60					FG: 1.0 ↓* CG: 0.9 ↑	
Andersen <i>et al</i> ²³	Mild to moderate hypertension	M	31–54	22	3	12	CG (n=9)	83	1.7±0.2	60	FG: nc CG: 0.1 ↓	FG: 0.2 ↑ CG: nc	FG: nc* CG: 0.5 ↓			
Barene <i>et al</i> ⁶⁵	Healthy hospital employees	F	25–65	118	41	40	ZG (n=30) CG (n=34)	78.6±3.2	12 weeks: 2.4±0.5 28 weeks: 1.2±0.2	60	FG: 0.1 ↓ ZG: 0.2 ↓ CG: nc	FG: nc ZG: 0.1 ↑ CG: nc	FG: nc ZG: 0.1 ↑ CG: nc	FG: 0.1 ↑ ZG: 0.2 ↓ CG: nc	FG: 0.1 ↑ ZG: 0.2 ↓ CG: nc	
Krustup <i>et al</i> ⁶⁰	Healthy untrained	F	19–47	28	6	68	RG (n=8) CG (n=7)	81±1	1.78	60	FG: 0.2 ↓ RG: nc CG: 0.1 ↑	FG: 0.1 ↑ RG: 0.1 ↑ CG: 0.1 ↑	FG: 0.06 ↓ RG: 0.06 ↑ CG: 0.05 ↑	FG: 0.1 ↓ RG: 0.1 ↓ CG: 0.2 ↑	FG: nc RG: 0.4 ↓ CG: 0.1 ↑	FG: 0.1 ↓ RG: 0.3 ↓ CG: 0.3 ↑
Krustup <i>et al</i> ⁶⁷	Healthy untrained	F	19–47	53	12	16	RG (n=18) CG (n=14)	83	1.8	60					FG: 0.1 ↓ RG: nc CG: 0.3 ↓	
Krustup <i>et al</i> ⁶	Healthy untrained	M	20–43	36	4	12	RG (n=12) CG (n=11)	82	2.3	60	FG: 0.4 ↓ RG: 0.1 ↓ CG: nc	FG: 0.1 ↑ RG: 0.1 ↑ CG: 0.1 ↑	FG: 0.2 ↓ RG: 0.3 ↓ CG: nc	FG: 0.2 ↓ RG: 0.3 ↓ CG: nc		
Krustup <i>et al</i> ⁶¹	Untrained with mild hypertension	M	30–55	43	10	26	CG (n=11)	85±7	1.7±0.5	60	FG: 0.3 ↓ CG: 0.3 ↑	FG: 0.1 ↓ CG: 0.1 ↑			FG: nc CG: 0.3 ↓	
Mohr <i>et al</i> ⁶	Sedentary with mild hypertension	F	35–50	42	1	15	CG (n=20)	80.5±1.1	3.0±0.1	60	FG: nc CG: nc	FG: nc CG: nc	FG: 0.2 ↓ CG: 0.3 ↓	FG: 0.4 ↓ CG: 0.1 ↑		
Randers <i>et al</i> ⁶⁴	Healthy untrained	M	20–43	22	5	12+52	CG (n=7)	12 weeks: 81 52 weeks: 82	12 weeks: 1.8–2.9 52 weeks: 0.9–1.6	60	FG: 0.2 ↓ CG: 0.2 ↑	FG: 0.1 ↑ CG: nc	FG: 0.2 ↓ CG: 0.2 ↓	FG: nc CG: 0.1 ↑	FG: 0.2 ↓ CG: nc	FG: 0.2 ↓ CG: 0.2 ↓
Randers <i>et al</i> ⁶⁵	Homeless	M	27–47	55	23	12	CG (n=10)	82±4	2.8±0.8	60	FG: 0.4 ↓* CG: 0.1 ↑	FG: nc CG: 0.1 ↓	FG: 0.08 ↑ CG: 0.1 ↓	FG: 0.1 ↓ CG: 0.1 ↑	FG: 0.1 ↑ CG: 0.2 ↓	
Andersen <i>et al</i> ⁶⁴	Healthy elderly	M	63–74	27	1	16+46	STG (n=9) CG (n=8)	-80	1.7±0.3	60	FG: nc STG: 0.2 ↑ CG: 0.1 ↑	FG: 0.2 ↑ STG: 0.3 ↑ CG: nc	FG: nc STG: 0.1 ↑ CG: 0.2 ↑	FG: 0.5 ↓ STG: 0.5 ↓ CG: 0.1 ↓	FG: 0.1 ↓ STG: 0.1 ↑ CG: 0.2 ↑	FG: 0.1 ↓ STG: 0.4 ↑ CG: nc
Krustup <i>et al</i> ⁶⁵	Mildly hypertensive middle-aged	F	45±5	41	10	52	CG (n=12)	-80	2.5±0.4	45–60	FG: 0.1 ↓* CG: 0.3 ↑	FG: 0.2 ↑* CG: 0.2 ↓	FG: 0.1 ↓* CG: 0.2 ↑	FG: nc CG: 0.5 ↑	FG: 0.3 ↑ CG: 0.2 ↑	

↑, significant increase; ↓, decrease; ↓*, significant decrease; ↓, decrease. CG, control group; F, female; FG, football group; HDL, high-density lipoprotein; HRmax, maximal heart rate; LDL, low-density lipoprotein; M, male; nc, no changes; RG, running group; STG, strength training group; ZG, Zumba group.

Table 4 Effect of recreational football on systolic and diastolic blood pressure with modifying effects for type of control group, gender, age, length of training intervention and training frequency

	Systolic blood pressure (mm Hg)			Diastolic blood pressure (mm Hg)		
	Effect size (95% CI)	±95% CL	Magnitude-based inference	Effect size (95% CI)	±95% CL	Magnitude-based inference
Type of control						
No exercises	4.20 (1.87 to 6.53)	1.7	Most likely extremely largely beneficial	3.89 (2.33 to 5.44)	1.3	Most likely very largely beneficial
Running group	-0.75 (-4.24 to 2.74)	3.7	Possibly moderately harmful	2.21 (-0.81 to 5.23)	3.1	Possibly largely beneficial
Zumba group	-0.71 (-6.32 to 4.91)	6.0	Possibly moderately harmful	0.54 (-2.69 to 3.77)	3.4	Unclear
Gender						
Male	2.25 (0.21 to 4.30)	2.0	Possibly very largely beneficial	3.98 (2.32 to 5.64)	1.1	Most likely very largely beneficial
Female	4.17 (1.15 to 7.19)	2.8	Very likely extremely largely beneficial	2.28 (0.82 to 3.75)	1.9	Likely very largely beneficial
Age (years)						
18–45	1.23 (-1.32 to 3.77)	2.7	Unclear	2.49 (0.70 to 4.28)	1.7	Likely very largely beneficial
45–65	5.69 (2.97 to 8.41)	2.3	Most likely extremely largely beneficial	3.99 (2.16 to 5.83)	1.3	Most likely very largely beneficial
>65	1.02 (-8.32 to 10.35)	10.0	Unclear	0.31 (-4.67 to 5.29)	5.3	Unclear
Length of training intervention						
≤12 weeks	0.67 (-1.90 to 3.24)	13.0	Unclear	2.15 (0.46 to 3.83)	1.6	Likely very largely beneficial
>12 weeks	4.59 (2.46 to 6.72)	1.5	Most likely extremely largely beneficial	3.63 (2.14 to 5.12)	1.2	Most likely very largely beneficial
Training frequency						
≤2 weeks	2.77 (0.78 to 4.77)	1.8	Likely very largely beneficial	1.96 (0.47 to 3.45)	1.4	Likely largely beneficial
>2 weeks	3.71 (0.69 to 6.73)	2.9	Likely very largely beneficial	4.01 (2.48 to 5.54)	1.6	Most likely extremely large beneficial
Type of hypertension						
Normotensive	1.80 (-0.04 to 3.65)	1.8	Possibly largely beneficial	1.21 (0.11 to 2.32)	1.1	Possibly largely beneficial
Prehypertensive	4.36 (0.02 to 8.70)	4.3	Likely extremely largely beneficial	5.52 (3.51 to 7.54)	2.2	Most likely extremely largely beneficial
Mild hypertensive	7.97 (5.03 to 10.91)	2.6	Most likely extremely largely beneficial	6.53 (3.81 to 9.25)	1.6	Most likely extremely largely beneficial

95%CI, Confidence interval at 95%; ± 95%CL, Confidence limit at 95%.

0.21 to 4.30 and ES=4.17 mm Hg; 95% CI 1.15 to 7.19, respectively). For the DBP results the evidence was stronger for an effect in men than in women, with *most likely very large beneficial* effects for men (ES=3.98 mm Hg; 95% CI 2.32 to 5.64) and *likely very large beneficial* effects for women (ES=2.28 mm Hg; 95% CI 0.82 to 3.75). When a comparison of recreational football effects was performed for the age groups, *most likely extremely large beneficial* and *most likely very large beneficial* effects were noted in the 45–65 age group for both SDP and DBP, as well as for the *likely very large beneficial* effects for DBP in the 18–45 age group. In the 18–45 and +65 groups, the effects were *unclear* for SBP, and in the +65 group the effects for DBP were *unclear*. *Unclear* (ES=0.67 mm Hg; 95% CI -1.90 to 3.24) and a *likely very largely beneficial* (ES=2.15 mm Hg; 95% CI 0.46 to 3.83) ES were seen for SBP and DBP for the duration time of up to 12 weeks of training. *Most likely extremely large beneficial* effects (ES=4.59 mm Hg; 95% CI 2.46 to 6.72) and *most likely very large beneficial* effects (ES=3.63 mm Hg; 95% CI 2.14 to 5.12) were observed for training periods lasting more than 12 weeks for SBP and DBP, respectively. When the results

were moderated using training frequency, a *likely large beneficial* and *most likely extremely large beneficial* ES were retrieved for moderators (≤2 and >2 sessions per week) for DPB. *Likely very large beneficial* effects were observed for SBP for both moderators. A mean decrease of 5.3 mm Hg and 4.0 mm Hg for SBP and DBP was observed for football group and 3.5 and 0.7 mm Hg for controls, respectively.

The effects on SBP of football when compared with running and Zumba groups were *possibly moderately harmful*, while the effect on DBP was *unclear* when compared with a Zumba group. The effect of recreational football on DBP when compared with continuous running was *possibly largely beneficial* (ES=2.21 mm Hg; 95% CI -0.81 to 5.23).

Study outcomes for RHR

Meta-analysis of the effect of recreational football on RHR was determined as *most likely extremely largely beneficial* (ES=6.03 beats/min; 95% CI 4.43 to 7.64) when compared with a non-active control group (table 5). A *small unclear* effect

Table 5 Effect of recreational football on resting heart rate and muscular fitness with modifying effects for type of control group, gender, age, length of training intervention and training frequency

	Resting heart rate (beats/min)			Muscular fitness, CMJ (cm)		
	Effect size (95% CI)	±95% CL	Magnitude-based inference	Effect size (95% CI)	±95% CL	Magnitude-based inference
Type of control						
No exercises	6.03 (4.43 to 7.46)	2.0	Most likely extremely largely beneficial	2.27 (1.29 to 3.25)	0.7	Most likely very largely beneficial
Running group	0.57 (−1.48 to 2.62)	2.2	Unclear	0.28 (−1.05 to 1.61)	1.4	Unclear
Zumba group				−1.06 (−3.40 to 1.28)	2.5	Possibly moderately harmful
Gender						
Male	5.06 (2.48 to 7.64)	1.7	Most likely extremely largely beneficial	1.48 (0.20 to 2.75)	1.2	Very likely largely beneficial
Female	2.95 (0.76 to 5.14)	2.1	Very likely very largely beneficial	0.63 (−0.72 to 1.97)	1.4	Unclear
Age (years)						
18–45	3.19 (0.95 to 5.43)	2.1	Very likely very largely beneficial	0.92 (−1.07 to 2.77)	0.7	Unclear
45–65	5.66 (2.14 to 9.18)	3.2	Most likely extremely largely beneficial	−0.01 (−1.03 to 1.01)	1.0	Unlikely trivially harmful
>65	6.00 (4.34 to 7.66)	2.4	Most likely extremely largely beneficial	1.63 (0.48 to 2.78)	2.7	Very likely largely beneficial
Length of training intervention						
≤12 weeks	1.99 (−2.09 to 6.08)	4.3	Unclear	0.09 (−1.86 to 2.03)	2.1	Unclear
>12 weeks	4.70 (2.76 to 6.65)	1.5	Most likely extremely largely beneficial	1.72 (0.77 to 2.66)	0.6	Most likely largely beneficial
Training frequency						
≤2 weeks	4.58 (2.10 to 7.07)	1.5	Most likely extremely largely beneficial	1.56 (0.00 to 3.12)	1.6	Likely largely beneficial
>2 weeks	3.36 (1.13 to 5.59)	2.0	Very likely very largely beneficial	1.05 (−0.15 to 2.25)	1.2	Likely moderately beneficial

95%CI, Confidence interval at 95%; ±95%CL, Confidence limit at 95% .

was found in comparison with running (ES=0.57beats/min; 95%CI −1.48, to 2.62). *Most likely extremely large beneficial* and *very likely very large beneficial* effects were observed for male and female gender moderators (ES=5.06beats/min; 95%CI 2.48 to 7.64 and ES=2.95beats/min; 95%CI 0.76 to 5.14). The effect on RHR in individuals 18–45 years old was beneficial (ES=3.19beats/min; 95%CI 0.95 to 5.43, *very likely very largely beneficial*). When compared with the 45–65 and 65+ age groups, the observed effects were *most likely extremely largely beneficial* (ES=5.66beats/min; 95%CI 2.14 to 9.18 and ES=6.00beats/min; 95%CI 4.34 to 7.66). In cases where the results were compared by the training intervention duration moderators, the results were unclear and beneficial for up to 12 weeks (ES=1.99beats/min; 95%CI −2.09 to 6.08) and longer than 12 weeks (ES=4.70beats/min; 95%CI 2.76 to 6.65, *most likely extremely largely beneficial*). *Most likely extremely large beneficial* effects were observed when training frequency was ≤2, while *very likely very large beneficial* effects were reported in the case of two or more sessions per week. *Most likely very large beneficial* (ES=3.83beats/min; 95%CI 2.16 to 5.51) effect of recreational football intervention was computed for the overall sample.

Study outcomes for body composition

Trivial and small effects were observed for BMI compared with all other investigated training regimens (table 6). Similar results were observed for body mass where the meta-analysed effects were trivial to small regardless of the type of control moderators, with *unlikely small beneficial* and *very unlikely small harmful* effects for the no-exercise and running groups (table 6). ES values for LBM were trivial and small regardless

of moderator variables (table 7). In addition, the meta-analysed effect of recreational football compared with Zumba and for participants 46–65 years old was unclear. With respect to the overall gender sample, the effect of football training was rated as *very likely moderately beneficial* (ES=1.10kg/m²; 95%CI 0.54 to 1.66). Observed recreational football effect values with respect to fat mass were most likely largely beneficial (ES=1.72kg; 95%CI 0.86 to 2.58) when compared with no-exercise controls (table 7). The effects were possibly small harmful when compared with running (ES=−0.41kg; 95%CI −1.24 to 0.42) and unclear when compared with Zumba (ES=0.35kg; 95%CI −1.54 to 2.24). With respect to gender, ES was very likely largely beneficial and possibly moderately beneficial for male and female moderators. Beneficial effects were observed in the groups of 18–45 years old and 45–65 years old (possibly moderately beneficial and most likely large beneficial). When subgroup analysis was performed, very likely large beneficial and likely moderately beneficial effects were observed for intervention duration of up to 12 weeks and over 12 weeks, while unlikely small harmful and most likely large beneficial ES was seen for up to two sessions per week and over two sessions per week.

Study outcomes for muscular fitness

Overall change induced by recreational football training on countermovement jump (CMJ) was classified as *moderately likely beneficial* (ES=1.08cm; 95%CI 0.15 to 2.00). The meta-analysed effect on CMJ of recreational football compared with no-exercise controls was *most likely very largely beneficial* (ES=2.27cm; 95%CI 1.29 to 3.25; table 5). The effect was *unclear* when compared with running (ES=0.28cm; 95%CI

Table 6 Effect of recreational football on body mass index and body mass with modifying effects for type of control group, gender, age, length of training intervention and training frequency

	Body mass index (kg/m ²)			Body mass (kg)		
	Effect size (95% CI)	±95% CL	Magnitude-based inference	Effect size (95% CI)	±95% CL	Magnitude-based inference
Type of control						
No exercises	0.28 (−0.12 to 0.67)	0.41	Possibly small beneficial	0.70 (−0.29 to 1.68)	1.0	Unlikely small beneficial
Running group	−0.12 (−0.54 to 0.30)	0.45	Unlikely trivially harmful	−0.21 (−1.34 to 0.92)	1.2	Very unlikely small harmful
Zumba group	−0.40 (−1.34 to 0.54)	0.99	Possibly small harmful	0.09 (−2.58 to 2.75)	2.9	Unlikely trivially harmful
Gender						
Male	0.54 (0.15 to 0.93)	0.37	Likely small beneficial	1.64 (0.42 to 2.87)	1.2	Likely largely beneficial
Female	−0.19 (−0.50 to 0.13)	0.33	Unlikely trivially harmful	−0.14 (−0.94 to 0.67)	0.9	Very unlikely trivially harmful
Age (years)						
18–45	0.02 (−0.36 to 0.41)	0.42	Very unlikely trivially harmful	−0.17 (−1.03 to 0.68)	0.9	Very unlikely trivially harmful
45–65	0.02 (−0.63 to 0.67)	0.69	Unlikely trivially harmful	1.08 (−0.47 to 2.63)	1.6	Possibly moderately beneficial
>65	0.50 (−0.03 to 1.03)	0.53	Possibly small beneficial	1.52 (−0.13 to 3.17)	1.7	Possibly largely beneficial
Length of training intervention						
≤12 weeks	0.46 (−0.24 to 1.13)	0.71	Possibly small beneficial	1.04 (−0.98 to 3.06)	2.1	Unclear
>12 weeks	0.03 (−0.24 to 0.30)	0.29	Most unlikely trivially beneficial	0.32 (−0.39 to 1.04)	0.8	Most unlikely small harmful
Training frequency						
≤2 weeks	0.01 (−0.27 to 0.29)	0.31	Very unlikely trivially harmful	0.15 (−0.60 to 0.90)	0.8	Most likely trivially beneficial
>2 weeks	0.39 (−0.13 to 0.92)	0.54	Possibly small beneficial	1.48 (−0.07 to 3.03)	1.6	Possibly largely beneficial

95%CI, Confidence interval at 95%; ±95%CL, Confidence limit at 95%.

−1.05 to 1.61) and *possibly trivially harmful* when compared with strength training (ES=−1.06 cm; 95% CI −3.40 to 1.28). In cases where the results were analysed separately for men and women, ES values were *very likely largely beneficial* and *unclear*. When compared between age groups, for 18–45 years old ES was *unclear*, for the group of 46–65 years old it was *unlikely trivially harmful* (ES=−0.01 cm; 95% CI −1.03 to 1.01), and for the 65+ group the result was *very likely largely beneficial* (ES=1.63 cm; 95% CI 0.48 to 2.78).

For training intervention duration, the effects were classified as *unclear* (ES=0.09 cm; 95% CI −1.86 to 2.03) for the up to 12-week intervention period and *most likely largely beneficial* (ES=1.72 cm; 95% CI 0.77 to 2.66) for the over 12-week intervention period. With respect to the training frequency, the effects were *likely largely beneficial* (ES=1.56 cm; 95% CI 0.00 to 3.12) and *likely moderately beneficial* (ES=1.05 cm; 95% CI −0.15 to 2.25) for up to two sessions per week and over two sessions per week.

Table 7 Effect of recreational football on lean body mass and fat mass with modifying effects for type of control group, gender, age, length of training intervention and training frequency

	Lean body mass (kg)			Fat mass (kg)		
	Effect size (95% CI)	±95% CL	Magnitude-based inference	Effect size (95% CI)	±95% CL	Magnitude-based inference
Type of control						
No exercises	0.51 (0.03 to 0.99)	0.48	Possibly moderately beneficial	1.72 (0.86 to 2.58)	0.56	Most likely largely beneficial
Running group	0.20 (−0.40 to 0.79)	0.33	Very unlikely small harmful	−0.41 (−1.24 to 0.42)	0.87	Possibly small harmful
Zumba group	0.05 (−2.30 to 2.39)	2.50	Unclear	0.35 (−1.54 to 2.24)	2.00	Unclear
Gender						
Male	0.12 (−0.48 to 0.71)	0.63	Very unlikely trivially harmful	1.33 (0.61 to 2.04)	1.90	Very likely largely beneficial
Female	0.59 (0.16 to 1.02)	0.40	Possibly small beneficial	0.74 (−0.17 to 1.65)	0.93	Possibly moderately beneficial
Age (years)						
18–45	0.56 (0.11 to 1.00)	0.43	Possibly small beneficial	0.68 (−0.31 to 1.67)	1.00	Possibly moderately beneficial
45–65	0.28 (−0.73 to 1.29)	1.10	Unclear	1.63 (1.00 to 2.27)	0.66	Most likely largely beneficial
>65	0.20 (−0.73 to 1.13)	0.99	Unlikely small beneficial	0.58 (−0.56 to 1.72)	0.23	Unclear
Length of training intervention						
≤12 weeks	−0.02 (−1.31 to 1.28)	1.30	Unlikely trivially harmful	1.45 (0.41 to 2.49)	0.97	Very likely largely beneficial
>12 weeks	0.46 (0.10 to 0.82)	0.35	Unlikely small beneficial	0.88 (0.16 to 1.59)	0.69	Likely moderately beneficial
Training frequency						
≤2 weeks	0.46 (0.08 to 0.84)	0.37	Unlikely small beneficial	−0.32 (−0.86 to 0.21)	0.19	Unlikely small harmful
>2 weeks	0.43 (0.08 to 0.77)	0.17	Unlikely small beneficial	1.65 (0.85 to 2.68)	0.66	Most likely largely beneficial

95%CI, Confidence interval at 95%; ±95%CL, Confidence limit at 95%.

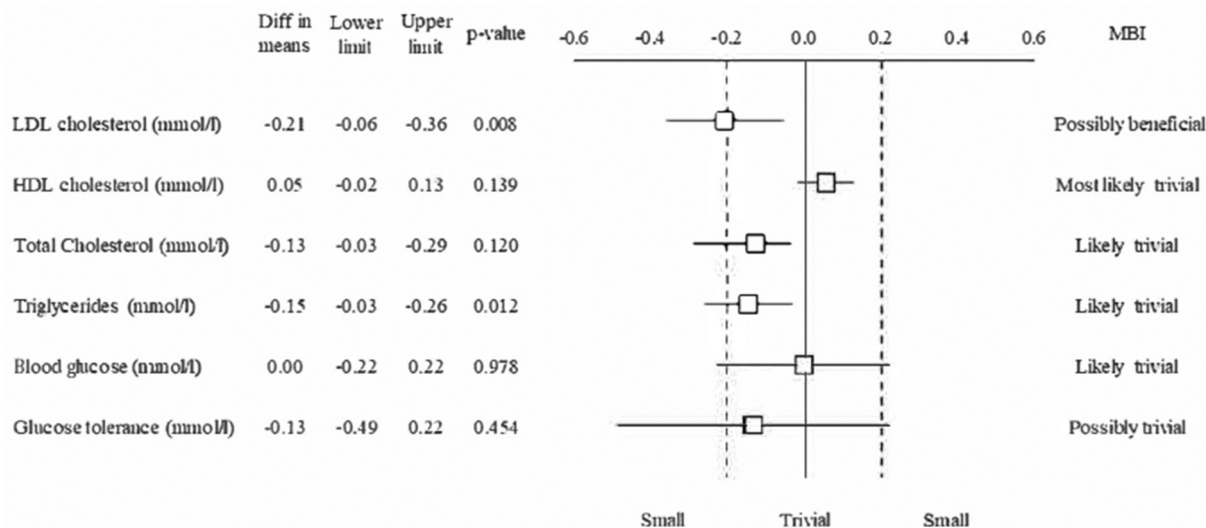


Figure 2 Forest plot of the effect sizes and 95% CIs of the changes in overall metabolic parameters. HDL, high-density lipoprotein; LDL, low-density lipoprotein; MBI, magnitude-based inferences.

Study outcomes for metabolic responses

Effects of recreational football on metabolic responses were compared with no-exercise controls, but not compared by type of training intervention, sex, age, training frequency and duration moderators (figure 2). Overall effect was classified as *possibly small beneficial* (ES=0.21 mmol/L; 95% CI 0.06 to 0.36) for plasma LDL cholesterol (figure 2). *Most likely trivial* (ES=0.05 mmol/L; 95% CI -0.02 to 0.13) were observed for plasma HDL cholesterol. *Likely trivial* effects were observed for total plasma cholesterol (ES=0.13 mmol/L; 95% CI -0.03 to 0.29), plasma triglycerides (ES=0.15 mmol/L; 95% CI 0.03 to 0.26) and blood glucose (ES=0.00 mmol/L; 95% CI -0.22 to 0.22), while *possibly trivial* effects were seen for glucose tolerance (ES=-0.13 mmol/L; 95% CI -0.49 to 0.22) (figure 2).

Publication bias

The Egger's test was performed to provide statistical evidence of funnel plot asymmetry. The results indicated publication bias for blood pressure and CMJ analysis ($P < 0.10$). Publication bias was not observed for the remaining variables ($P > 0.10$).

GRADE recommendations for strength of evidence

Observed results strongly recommend to use recreational football to reduce BMI, body mass and LBM because overall quality of evidence is high without any publication bias or inconsistency among included studies (table 8). Moderate quality of evidence was determined for SBP and DBP without inconsistency. Results recommended recreational football because of its desirable effects on SBP and DBP. Additionally, certainty of metabolic parameters (total plasma cholesterol, LDL, triglycerides, fasting blood glucose and glucose tolerance) was high without risk of bias and inconsistency. In contrast, certainty of fat mass variable is low with serious inconsistency as well as strongly suspected publication bias.

DISCUSSION

The principal findings from the 31 papers that met the inclusion criteria were that recreational football has multiple positive effects on health-related physical fitness in comparison with no-exercise controls, including beneficial effects on systolic and

diastolic blood pressure, RHR, fat mass, plasma LDL cholesterol and CMJ performance.

Previous meta-analyses have revealed that recreational football interventions lasting 3–4 months have a positive impact on maximal oxygen uptake compared with no-exercise controls in both men and women, with calculated average effects of 4.11 mL/kg/min¹⁵ and 3.51 mL/kg/min,⁶ respectively. One of the main findings of the present study is that, when compared with no-exercise controls, recreational football interventions demonstrate additional positive effects on cardiovascular fitness and health profile, including improvements in blood pressure. Indeed, the impact of 3–4 months of recreational football organised as 45–60 min two to three times per week was *most likely beneficial* for SBP and *most likely beneficial* for DBP compared with no-exercise controls. As expected, a greater blood pressure reduction was observed with 3–4 months of recreational football interventions for participants with hypertension than for individuals with normotension.⁴⁵ The observed reduction in SBP and DBP was 11 and 7 mm Hg in subjects with mild hypertension and 10 and 7 mm Hg in individuals with prehypertension. These improvements are comparable with the acute effect of taking one standard dose of a blood pressure-lowering drug,⁴⁶ and have important clinical importance as a blood pressure reduction of such a magnitude corresponds to a lowered risk of stroke by 20%–30% in individuals with hypertension.⁴⁶

The positive effects were observed in both men and women, and for age groups of 18–45 years old and 45–60 years old. Specifically, the meta-analysis showed the effect of recreational football on SBP to be *possibly very large* and *very likely extremely largely beneficial* in men and women, and indicated that the effect on DBP was greater for men than for women. When recreational football effects were related to age, *likely very large beneficial* effects were observed for DBP in the 18–45 age group and *most likely very largely beneficial* for the 45–65 age group, whereas only the 45–65 age group had positive effects on SBP. It was interesting to note that a harmful effect was found for SBP and a large beneficial effect for DBP compared with continuous running. Aerobic training that lasts between 16 and 52 weeks can lower resting blood pressure (both SBP and DBP) by 1%–2%.^{35,47} Football training proved to be superior in lowering DBP directly

Table 8 GRADE quality of evidence of included studies and relevant outcomes

Certainty assessment							Patients (n)		Effect		Certainty	Importance
Studies (n)	Study design	Risk of bias	Inconsistency	Indirectness	Imprecision	Other considerations	Recreational football	Other exercise and control	Relative (95% CI)	Absolute (95% CI)		
Systolic blood pressure OVERALL (follow-up: range 12–54 weeks; scale from 110 to 151)												
17	Randomised trials	Not serious	Not serious	Not serious	Not serious	Publication bias strongly suspected*	457	453	–	MD 4.4 mm Hg lower (7.6 lower to 1.1 lower)	⊕⊕⊕○	MODERATE
Diastolic blood pressure OVERALL (follow-up: range 12–54 weeks; scale from 58 to 97)												
17	Randomised trials	Not serious	Not serious	Not serious	Not serious	Publication bias strongly suspected*	294	484	–	MD 3.2 mm Hg lower (5.3 lower to 1.1 lower)	⊕⊕⊕○	MODERATE
Resting heart rate OVERALL (follow-up: range 12–54 weeks; scale from: 51 to 80)												
15	Randomised trials	Not serious	Serious†	Not serious	Not serious	Publication bias strongly suspected*	245	330	–	MD 5.7 bpm lower (8.3 lower to 3.1 lower)	⊕⊕○○	CRITICAL LOW
Body mass index OVERALL (follow-up: range 12–54 weeks; scale from 22.5 to 35)												
19	Randomised trials	Not serious	Not serious	Not serious	Not serious	None	463	421	–	MD 0.3 kg/m ² lower (0.6 lower to 0.1 lower)	⊕⊕⊕⊕	HIGH
Body mass OVERALL (follow-up: range 12–54 weeks; scale from 65 to 100)												
19	Randomised trials	Not serious	Not serious	Not serious	Not serious	None	557	502	–	MD 2.1 kg lower (5.4 lower to 0.8 lower)	⊕⊕⊕⊕	HIGH
Lean body mass OVERALL (follow-up: range 12–54 weeks; scale from 38 to 67)												
19	Randomised trials	Not serious	Not serious	Not serious	Not serious	None	573	521	–	0.4 kg higher (0.1 higher to 0.8 higher)	⊕⊕⊕⊕	HIGH
Fat mass OVERALL (follow-up: range 12–54 weeks; scale from 19 to 38)												
19	Randomised trials	Not serious	Serious†	Not serious	Not serious	Publication bias strongly suspected*	576	522	–	MD 1.2 kg lower (1.7 lower to 0.6 lower)	⊕⊕○○	CRITICAL LOW
Muscular fitness OVERALL (follow-up: range 12–54 weeks; scale from 11.5 to 49.4)												
10	Randomised trials	Not serious	Very serious†	Not serious	Not serious	Publication bias strongly suspected*	170	227	–	MD 2.5 cm higher (0.9 higher to 4.1 higher)	⊕○○○	VERY LOW
Low-density lipoproteins OVERALL (follow-up: range 12–54 weeks; scale from 2.3 to 3.7)												
10	Randomised trials	Not serious	Not serious	Not serious	Not serious	None	273	214	–	MD 0.2 mmol/l lower (0.4 lower to 0.1 lower)	⊕⊕⊕⊕	HIGH
Total cholesterol OVERALL (follow-up: range 12–54 weeks; scale from 3.2 to 5.9)												
9	Randomised trials	Not serious	Not serious	Not serious	Not serious	None	521	203	–	MD 0.1 mmol/l lower (0.3 lower to 0.1 higher)	⊕⊕⊕⊕	HIGH
Triglycerides OVERALL (follow-up: range 12–54 weeks; scale from 0.7 to 3.7)												
8	Randomised trials	Not serious	Not serious	Not serious	Not serious	None	227	183	–	MD 0.1 mmol/l lower (0.2 lower to 0)	⊕⊕⊕⊕	HIGH
Fasting glucose OVERALL (follow-up: range 12–54 weeks; scale from 4.8 to 8.8)												
9	Randomised trials	Not serious	Not serious	Not serious	Not serious	None	245	193	–	MD 0.1 mmol/l lower (0.4 lower to 0.3 higher)	⊕⊕⊕⊕	HIGH
Glucose tolerance OVERALL (follow-up: range 12–54 weeks; scale from 24 to 69)												
5	Randomised trials	Not serious	Not serious	Not serious	Not serious	None	116	78	–	MD 0.6 mmol/l higher (0.2 lower to 1.1 higher)	⊕⊕⊕⊕	HIGH

*Significant result ($P < 0.10$) of Egger's test for funnel plot asymmetry.

†Assumption of large heterogeneity.

GRADE, Grading of Recommendations, Assessment, Development and Evaluations; MD, mean difference.

induced through improved muscle capillarisation, decreased arterial stiffness and increased cardiac relaxation time.³⁵ Recreational football effectively lowered SBP, but in comparison with Zumba exercise it had moderately negative effects. Physiological effects including cardiovascular response to Zumba activity are not fully elucidated and further research is needed.^{26 27}

With regard to the impact of recreational football training on RHR, our findings provide further support for the previous scientific studies that found that heart rate decreases with 3–4 months of recreational football performed for 45–60 min two to three times per week (6 beats per minute).¹⁵ Hence, the present meta-analysis showed the effect of recreational football

on RHR to be *most likely extremely largely beneficial* when compared with a non-active group, with positive very large effects in men as well as women. Positive effects were detected across all adult age ranges, including those aged 18–45 years old, 45–65 years old and over 65 years. No clear evidence was obtained when comparing the effects of recreational football on RHR with those of other sporting activities.

The present meta-analysis rates the effect of recreational football with respect to fat mass to be *most likely largely beneficial* compared with inactive controls, which is in accordance with the recent analysis by Oja *et al.*¹⁵ Thus, football training interventions lasting 12–16 weeks (2×60 min sessions/week) are likely to cause a decrease in total fat mass of 1–3 kg, which is clinically significant for overweight and obese adults.¹⁵ The present as well as other meta-analyses¹⁵ provide evidence that recreational football training is very likely beneficial for decreasing fat mass in both genders. Moreover, the 18–45 and 45–65 age groups were observed to respond to this type of physical training. The effects of football training are not as clear when compared with other exercise training protocols. For example, there are no clear effects when compared with Zumba dancing. Considering the limited number of studies reporting the effects of other sport disciplines, conclusions about the health benefits cannot yet be conclusively drawn. When evaluating the impact of recreational football on LBM, the effects were rated as trivial to small, when performed 2×60 min per week for 12–16 weeks, while the effect of football versus Zumba was unclear. In relation to gender, women display a greater effect than their male counterparts. In addition, participants in the 18–45 age group tend to respond better than older age groups (45–65 and 65+).

The effect of recreational football training on CMJ when compared with inactive controls was *most likely very largely beneficial*. The outcome of football training was unclear when compared with running and potentially lower when compared with strength training. Considering the limited existing data, no clear gender effect in women was detected with respect to the effects of recreational football training, while in men the effect was *very likely largely beneficial*. In individuals older than 65 years, somewhat greater ES were observed compared with the 18–45 age group. Finally, recreational football training interventions lasting longer than 12 weeks induced better responses in CMJ performance than interventions lasting less than 12 weeks.

Metabolic responses and their relationship to recreational football were displayed through changes in blood lipids, glucose concentration and glucose tolerance. It is strongly substantiated that exercise training lowers these metabolic risk factors for pathological conditions such as cardiac dysfunctions, sudden mortality and morbidity, arteriosclerosis and type II diabetes.^{3 24 35} In a narrative review by Bangsbo *et al.*,³ it was reported that changes provoked by recreational football were mainly non-significant, including reduced plasma LDL cholesterol level (4%–15%)^{5 29 33} and total plasma cholesterol (0.6%–8%),^{7 25 33} along with elevated HDL level (0%–9%).^{7 31} The present meta-analysis indicates similar outcomes with *possibly small beneficial* decrease in plasma LDL along with *most likely and likely trivial* in plasma HDL upregulation and triglycerides and total cholesterol decrement. The plasma LDL decrease was related mainly to increased weekly training frequency for the first 12 weeks, which could not be maintained for an additional 52 weeks when training frequency was reduced.^{24 35} The changes were generally caused by the responsive nature of LDL and HDL to aerobically induced energy expenditure.^{10 24 32} Additionally, the metabolic responses for fasting blood glucose and glucose tolerance (after 2 hours) were *trivial*. Although the precise effects

of recreational football compared with other types of exercise were not meta-analysed due to insufficient data, it is evident that recreational football displays a greater effect on blood lipids compared with other aerobic exercise regimens,^{5 24 29} and that the magnitude of change is associated with sex, baseline obesity level and maximal oxidative capacity.³² Further scientific work should examine effectiveness of recreational football of different formats and in comparison with strength training on various health-related physical fitness components.

Despite the multitude benefits elucidated in the present systematic review and meta-analysis, there are some limitations. For example, it is plausible to suggest that studies reporting statistically significant or positive results are more likely to be published in scientific journals compared with results showing no treatment effects. In line with this statement, one of the limitations in this meta-analysis is the phenomenon of negative results publication bias. Additionally, the small number of included studies measuring metabolic parameters may be a limitation, since ES could not be calculated for moderator variables. Finally, the lack of duplicate data extraction could be considered as a limitation of this meta-analysis.

CONCLUSION

In conclusion, the present meta-analysis demonstrated multiple broad-spectrum positive physical health effects of recreational football training in comparison with no-exercise controls, including beneficial effects on blood pressure, RHR, fat mass, LDL cholesterol and CMJ performance. In addition, it was evident that the majority of these effects occurred independently of age and gender, and most of the effects, except improvements in CMJ, occurred after only 12 weeks of training. Recreational football proved to be similarly effective and beneficial when compared with other exercise regimens on health-related physical fitness components. Thus, recreational football is a worthwhile *alternative* to Zumba dancing and continuous running providing similar decreases in body weight and fat mass.

What is already known?

- ▶ Recreational football is an intense versatile activity with marked positive effects on aerobic fitness.
- ▶ This exercise modality is suitable for both genders regardless of age, fitness level and skills.
- ▶ Recreational football is a highly motivating activity compared with conventional exercise programmes.

What are the findings?

- ▶ Recreational football displays positive effects on health-related physical fitness in comparison with no-exercise controls, including beneficial effects on cardiovascular, metabolic and musculoskeletal health.
- ▶ Recreational football induces a broad-spectrum positive impact on health-related physical fitness in healthy people regardless of gender and fitness level.
- ▶ Recreational football can be applied as an effective broad-spectrum non-pharmacological treatment of lifestyle diseases, such as hypertension and metabolic syndrome.

Contributors ZM, SP and NČ selected the studies and extracted the data. ZM and GS analysed the data. ZM, NČ and PK were responsible for conception and design, and drafting and revising the manuscript. ZM, PK and MM wrote the paper, and all authors commented on the paper and approved the final version.

Funding This research received no specific grant from any funding agency in the public, commercial or not-for-profit sectors.

Competing interests None declared.

Provenance and peer review Not commissioned; externally peer reviewed.

Open Access This is an Open Access article distributed in accordance with the Creative Commons Attribution Non Commercial (CC BY-NC 4.0) license, which permits others to distribute, remix, adapt, build upon this work non-commercially, and license their derivative works on different terms, provided the original work is properly cited and the use is non-commercial. See: <http://creativecommons.org/licenses/by-nc/4.0/>

© Article author(s) (or their employer(s) unless otherwise stated in the text of the article) 2018. All rights reserved. No commercial use is permitted unless otherwise expressly granted.

REFERENCES

- Lee DC, Artero EG, Sui X, et al. Mortality trends in the general population: the importance of cardiorespiratory fitness. *J Psychopharmacol* 2010;24(4 Suppl):27–35.
- Milanović Z, Pantelić S, Sporiš G, et al. Health-related physical fitness in healthy untrained men: effects on vo2max, jump performance and flexibility of soccer and moderate-intensity continuous running. *PLoS One* 2015;10:e0135319.
- Bangsbo J, Hansen PR, Dvorak J, et al. Recreational football for disease prevention and treatment in untrained men: a narrative review examining cardiovascular health, lipid profile, body composition, muscle strength and functional capacity. *Br J Sports Med* 2015;49:568–76.
- Krustrup P, Aagaard P, Nybo L, et al. Recreational football as a health promoting activity: a topical review. *Scand J Med Sci Sports* 2010;20(Suppl 1):1–13.
- Krustrup P, Nielsen JJ, Krustrup BR, et al. Recreational soccer is an effective health-promoting activity for untrained men. *Br J Sports Med* 2009;43:825–31.
- Milanović Z, Pantelić S, Čović N, et al. Is Recreational soccer effective for improving Vo2max a systematic review and meta-analysis. *Sports Med* 2015;45:1339–53.
- Randers MB, Nybo L, Petersen J, et al. Activity profile and physiological response to football training for untrained males and females, elderly and youngsters: influence of the number of players. *Scand J Med Sci Sports* 2010;20(Suppl 1):14–23.
- Andersen LJ, Randers MB, Hansen PR, et al. Structural and functional cardiac adaptations to 6 months of football training in untrained hypertensive men. *Scand J Med Sci Sports* 2014;24(Suppl 1):27–35.
- Mohr M, Lindenskov A, Holm PM, et al. Football training improves cardiovascular health profile in sedentary, premenopausal hypertensive women. *Scand J Med Sci Sports* 2014;24(Suppl 1):36–42.
- Andersen TR, Schmidt JF, Thomassen M, et al. A preliminary study: effects of football training on glucose control, body composition, and performance in men with type 2 diabetes. *Scand J Med Sci Sports* 2014;24(Suppl 1):43–56.
- Uth J, Hornstrup T, Schmidt JF, et al. Football training improves lean body mass in men with prostate cancer undergoing androgen deprivation therapy. *Scand J Med Sci Sports* 2014;24(Suppl 1):105–12.
- Andersen TR, Schmidt JF, Nielsen JJ, et al. Effect of football or strength training on functional ability and physical performance in untrained old men. *Scand J Med Sci Sports* 2014;24(Suppl 1):76–85.
- Helge EW, Randers MB, Hornstrup T, et al. Street football is a feasible health-enhancing activity for homeless men: biochemical bone marker profile and balance improved. *Scand J Med Sci Sports* 2014;24(Suppl 1):122–9.
- Krustrup P, Helge EW, Hansen PR, et al. Effects of recreational football on women's fitness and health: adaptations and mechanisms. *Eur J Appl Physiol* 2018;118:3717–33.
- Oja P, Titz S, Kokko S, et al. Health benefits of different sport disciplines for adults: systematic review of observational and intervention studies with meta-analysis. *Br J Sports Med* 2015;49:434–40.
- Moher D, Liberati A, Tetzlaff J, et al. Preferred reporting items for systematic reviews and meta-analyses: the PRISMA statement. *Ann Intern Med* 2009;151:264–9.
- Bacon AP, Carter RE, Ogle EA, et al. VO2max trainability and high intensity interval training in humans: a meta-analysis. *PLoS One* 2013;8:e73182.
- Schünemann HJ, Schünemann AH, Oxman AD, et al. Grading quality of evidence and strength of recommendations for diagnostic tests and strategies. *BMJ* 2008;336:1106–10.
- Liberati A. The PRISMA statement for reporting systematic reviews and meta-analyses of studies that evaluate health care interventions: explanation and elaboration. *Ann Intern Med* 2009;151:W–94.
- Deeks JJ, Higgins J, Altman DG. Analysing data and undertaking meta-analyses. *Cochrane handbook for systematic reviews of interventions: cochrane book series*. USA: John Wiley & Sons, 2008:243–96.
- Bartolucci AA. Describing and interpreting the methodological and statistical techniques in meta-analyses. *Biochem Med* 2009;19:127–36.
- Hopkins WG, Marshall SW, Batterham AM, et al. Progressive statistics for studies in sports medicine and exercise science. *Med Sci Sports Exerc* 2009;41:3–13.
- Andersen LJ, Randers MB, Westh K, et al. Football as a treatment for hypertension in untrained 30-55-year-old men: a prospective randomized study. *Scand J Med Sci Sports* 2010;20(Suppl 1):98–102.
- Randers MB, Nielsen JJ, Krustrup BR, et al. Positive performance and health effects of a football training program over 12 weeks can be maintained over a 1-year period with reduced training frequency. *Scand J Med Sci Sports* 2010;20(Suppl 1):80–9.
- Randers MB, Petersen J, Andersen LJ, et al. Short-term street soccer improves fitness and cardiovascular health status of homeless men. *Eur J Appl Physiol* 2012;112:2097–106.
- Barene S, Krustrup P, Brekke OL, et al. Soccer and Zumba as health-promoting activities among female hospital employees: a 40-weeks cluster randomised intervention study. *J Sports Sci* 2014;32:1539–49.
- Barene S, Krustrup P, Jackman SR, et al. Do soccer and Zumba exercise improve fitness and indicators of health among female hospital employees? A 12-week RCT. *Scand J Med Sci Sports* 2014;24:990–9.
- Connolly LJ, Scott S, Mohr M, et al. Effects of small-volume soccer and vibration training on body composition, aerobic fitness, and muscular PCr kinetics for inactive women aged 20–45. *J Sport Health Sci* 2014;3:284–92.
- Knoepfli-Lenzin C, Sennhauser C, Toigo M, et al. Effects of a 12-week intervention period with football and running for habitually active men with mild hypertension. *Scand J Med Sci Sports* 2010;20(Suppl 1):72–9.
- Krustrup P, Hansen PR, Randers MB, et al. Beneficial effects of recreational football on the cardiovascular risk profile in untrained premenopausal women. *Scand J Med Sci Sports* 2010;20(Suppl 1):40–9.
- Krustrup P, Randers MB, Andersen LJ, et al. Soccer improves fitness and attenuates cardiovascular risk factors in hypertensive men. *Med Sci Sports Exerc* 2013;45:553–61.
- Mohr M, Helge EW, Petersen LF, et al. Effects of soccer vs swim training on bone formation in sedentary middle-aged women. *Eur J Appl Physiol* 2015;115:2671–9.
- Schmidt JF, Hansen PR, Andersen TR, et al. Cardiovascular adaptations to 4 and 12 months of football or strength training in 65- to 75-year-old untrained men. *Scand J Med Sci Sports* 2014;24(Suppl 1):86–97.
- Hammami A, Kasmi S, Razgallah M, et al. Recreational soccer training improves heart-rate variability indices and physical performance in untrained healthy adolescent. *Sport Sciences for Health* 2016:1–8.
- Krustrup P, Skoradal MB, Randers MB, et al. Broad-spectrum health improvements with one year of soccer training in inactive mildly hypertensive middle-aged women. *Scand J Med Sci Sports* 2017;27:1893–901.
- Seabra A, Katzmarzyk P, Carvalho MJ, et al. Effects of 6-month soccer and traditional physical activity programmes on body composition, cardiometabolic risk factors, inflammatory, oxidative stress markers and cardiorespiratory fitness in obese boys. *J Sports Sci* 2016;34:1822–9.
- Krustrup P, Hansen PR, Andersen LJ, et al. Long-term musculoskeletal and cardiac health effects of recreational football and running for premenopausal women. *Scand J Med Sci Sports* 2010;20(Suppl 1):58–71.
- Seabra A, Serra H, Seabra A, et al. Effects of a 6-month football intervention program on bone mass and physical fitness in overweight children. Columbus: Spine Research, 2016.
- Uth J, Hornstrup T, Christensen JF, et al. Efficacy of recreational football on bone health, body composition, and physical functioning in men with prostate cancer undergoing androgen deprivation therapy: 32-week follow-up of the FC prostate randomised controlled trial. *Osteoporos Int* 2016;27:1507–18.
- Helge EW, Aagaard P, Jakobsen MD, et al. Recreational football training decreases risk factors for bone fractures in untrained premenopausal women. *Scand J Med Sci Sports* 2010;20(Suppl 1):31–9.
- Jakobsen MD, Sundstrup E, Randers MB, et al. The effect of strength training, recreational soccer and running exercise on stretch-shortening cycle muscle performance during countermovement jumping. *Hum Mov Sci* 2012;31:970–86.
- Barene S, Holtermann A, Oseland H, et al. Effects on muscle strength, maximal jump height, flexibility and postural sway after soccer and Zumba exercise among female hospital employees: a 9-month randomised controlled trial. *J Sports Sci* 2016;34:1849–58.
- Sundstrup E, Jakobsen MD, Andersen LL, et al. Positive effects of 1-year football and strength training on mechanical muscle function and functional capacity in elderly men. *Eur J Appl Physiol* 2016;116:1127–38.
- Andersen TR, Schmidt JF, Pedersen MT, et al. The Effects of 52 Weeks of Soccer or Resistance Training on Body Composition and Muscle Function in +65-Year-Old Healthy Males—A Randomised Controlled Trial. *PLoS One* 2016;11:e0148236.
- Pedersen BK, Saltin B. Evidence for prescribing exercise as therapy in chronic disease. *Scand J Med Sci Sports* 2006;16(Suppl 1):3–63.
- Law MR, Morris JK, Wald NJ. Use of blood pressure lowering drugs in the prevention of cardiovascular disease: meta-analysis of 147 randomised trials in the context of expectations from prospective epidemiological studies. *BMJ* 2009;338:b1665.
- Kelley GA, Kelley KS. Aerobic exercise and resting blood pressure in women: a meta-analytic review of controlled clinical trials. *J Womens Health Gend Based Med* 1999;8:787–803.
- Andersen LJ, Hansen PR, Søgaard P, et al. Improvement of systolic and diastolic heart function after physical training in sedentary women. *Scand J Med Sci Sports* 2010;20(Suppl 1):50–7.