



University of Southern Denmark

The Danish National Multiple Myeloma Registry

The Danish Myeloma Study Group

Published in:
Clinical Epidemiology

DOI:
[10.2147/CLEP.S99463](https://doi.org/10.2147/CLEP.S99463)

Publication date:
2016

Document version
Final published version

Document license
CC BY-NC

Citation for pulished version (APA):
The Danish Myeloma Study Group (2016). The Danish National Multiple Myeloma Registry. *Clinical Epidemiology*, 2016(8), 583-587. <https://doi.org/10.2147/CLEP.S99463>

Terms of use

This work is brought to you by the University of Southern Denmark through the SDU Research Portal. Unless otherwise specified it has been shared according to the terms for self-archiving. If no other license is stated, these terms apply:

- You may download this work for personal use only.
- You may not further distribute the material or use it for any profit-making activity or commercial gain
- You may freely distribute the URL identifying this open access version

If you believe that this document breaches copyright please contact us providing details and we will investigate your claim. Please direct all enquiries to puresupport@bib.sdu.dk

The Danish National Multiple Myeloma Registry

Peter Gimsing¹
 Morten O Holmström²
 Tobias Wirenfelt Klausen³
 Niels Frost Andersen⁴
 Henrik Gregersen⁵
 Robert Schou Pedersen⁶
 Torben Plesner⁷
 Per Trøllund Pedersen⁸
 Mikael Frederiksen⁹
 Ulf Frølund²
 Carsten Helleberg³
 Annette Vangsted¹
 Peter de Nully Brown¹
 Niels Abildgaard¹⁰
 On behalf of the Danish
 Myeloma Study Group

¹Department of Hematology, Rigshospitalet, Copenhagen, ²Department of Hematology, Roskilde Sygehus, Roskilde, ³Department of Hematology, Herlev Hospital, Copenhagen, ⁴Department of Hematology, Aarhus University Hospital, Aarhus, ⁵Department of Hematology, Aalborg University Hospital, Aalborg, ⁶Department of Hematology, Holstebro Hospital, Holstebro, ⁷Department of Hematology, Vejle Hospital, Vejle, ⁸Department of Hematology, Hospital of Southwestern Jutland, Esbjerg, ⁹Department of Internal Medicine, Hospital of Southern Jutland, Aabenraa, ¹⁰Department of Hematology, Odense University Hospital, Odense, Denmark

Correspondence: Niels Abildgaard
 Department of Hematology, Odense University Hospital, Kloevervaenget 10, 12th Floor, DK-5000 Odense C, Denmark
 Tel +45 2322 1584
 Fax +45 6311 0961
 Email niels.abildgaard@rsyd.dk

Aim: The Danish National Multiple Myeloma Registry (DMMR) is a population-based clinical quality database established in January 2005. The primary aim of the database is to ensure that diagnosis and treatment of plasma cell dyscrasia are of uniform quality throughout the country. Another aim is to support research. Patients are registered with their unique Danish personal identification number, and the combined use of DMMR, other Danish National registries, and the Danish National Cancer Biobank offers a unique platform for population-based translational research.

Study population: All newly diagnosed patients with multiple myeloma (MM), smoldering MM, solitary plasmacytomas, and plasma cell leukemia in Denmark are registered annually; ~350 patients. Amyloid light-chain amyloidosis, POEMS syndrome (polyneuropathy, organomegaly, endocrinopathy, monoclonal gammopathy, and skin changes syndrome), monoclonal gammopathy of undetermined significance and monoclonal gammopathy of undetermined significance with polyneuropathy have been registered since 2014.

Main variables: The main registered variables at diagnosis are patient demographics, baseline disease characteristics, myeloma-defining events, clinical complications, prognostics, first- and second-line treatments, treatment responses, progression free, and overall survival.

Descriptive data: Up to June 2015, 2,907 newly diagnosed patients with MM, 485 patients with smoldering MM, 64 patients with plasma cell leukemia, and 191 patients with solitary plasmacytomas were registered. Registration completeness of new patients is ~100%. A data validation study performed in 2013–2014 by the Danish Myeloma Study Group showed >95% data correctness.

Conclusion: The DMMR is a population-based data validated database eligible for clinical, epidemiological, and translational research.

Keywords: Multiple Myeloma Registry, population-based, treatment response, progression-free survival, overall survival

Aim of the database

The Danish National Multiple Myeloma Registry (DMMR) is a population-based clinical quality database. DMMR was established on January 1, 2005, to collect clinical data on all newly diagnosed patients with symptomatic multiple myeloma (MM), smoldering MM (SMM), plasma cell leukemia (PCL), and osseous and extraosseous solitary plasmacytoma. Data were collected from all hematological departments in Denmark. The database is funded by the Danish Health Care Regions. The departments of hematology and hospitals are obligated to report data on all diagnosed patients to the database. The Danish Health Care Regions established the registry as a safeguard

for the regional governmental health care quality in Denmark. The aim is to ensure that diagnosis and treatment of plasma cell dyscrasia are of uniform quality throughout the country, which has been shown to be the case. Annual reports in Danish are published by the Danish Myeloma Study Group (DMSG). These reports are available at the DMSG website (www.myeloma.dk).

Another aim of the database is to support preclinical, clinical, and epidemiological research, and for these purposes, the database is unique because it is population based and has a high completeness of data. Quality assessment of the registered patients in the database is done by identity match with patients registered in the Danish Pathology Diagnosis Registry, called Patobank, and in the Danish National Hospital Registry,¹ which contains information on all hospital admissions for somatic diseases and the Danish Civil Registration System (CRS),² established in 1968 to register all individuals alive and living in Denmark by a unique personal identification number. Mismatch will be annotated, and the relevant departments will be asked to ensure registration of any missing patients. Treatment of MM has improved by the introduction of high-dose chemotherapy with autologous stem cell support in the 90s^{3,4} and by the introduction of thalidomide, bortezomib, and new immunomodulatory drugs such as lenalidomide and pomalidomide.⁵⁻⁷ Several new drugs are in the pipeline and are expected to be approved soon.⁸⁻¹⁰ The clinical trials leading to approval of new drugs are based on the studies of selected myeloma populations with strict exclusion criteria regarding age, performance status, comorbidity, and disease complications, eg, renal insufficiency. The new treatment options are expensive, and there is an increasing demand for documentation of the impact of antineoplastic treatment and supportive care, such as bisphosphonates, vertebroplasty, and erythropoietin. The database will be able to contribute in this context with population-based data from daily clinical practice.

The database does not register comorbidity. However, these data can be captured from the Danish National Hospital Registry, which includes information on all hospital admissions in Denmark since 1977 and all contacts to emergency rooms or outpatient clinics since 1995. Since 1994, diagnostic information on each contact with the hospital has been coded by physicians according to the International Classification of Diseases, Tenth Edition system.¹ Data on drug use can be obtained from the Danish prescription registry.¹¹ Status on working capability can be captured from the employment databases, and information on granted disability pension

can be obtained from the Danish Register for Evaluation of Marginalization (DREAM), which is based on data from the Danish Ministry of Employment, the Danish Ministry of Education, CRS, and SKAT (the Danish tax authority).¹² DREAM includes data on all Danish citizens who have received welfare benefits, since 1991. Each person is registered with a code indicating the type of welfare benefit received. DREAM has 100% coverage of those granted disability pension in Denmark since 2000. Thus, due to the unique Danish personal identification number, the combined use of a number of National registries allows scientific analyses on a number of socioeconomic factors, health care use, comorbidity factors, etc.

The Danish National Cancer Biobank was established in 2009,¹³ and the hematological cancers became part of this biobank in 2012. From newly diagnosed patients with myeloma, serum, plasma, DNA, bone marrow plasma, and bone marrow mononuclear cells or immunomagnetically separated CD138-positive cells and the CD138 negative fraction of cells have been frozen. Bone marrow and blood have also been sampled from some patients at first relapse or disease progression. Information on biobanked material is registered in the clinical database; thereby the clinical database and cancer biobank form the basis for population-based translational research.

The Danish Cancer Registry registers all malignancies and premalignancies in Denmark, including the same diagnoses as the specified myeloma registry. This is done in parallel with the MM registry and without any formal collaboration but based on the same data sources. The broad epidemiological cancer registry does not record clinical information on disease complications, given treatment, treatment responses, response duration, etc. Moreover, it does not record information on biobanked material.

Study population

All newly diagnosed patients with MM, SMM, PCL, and osseous and extraosseous solitary plasmacytoma have been registered since January 1, 2005. At progression from SMM or solitary plasmacytomas to MM, patients are re-registered with data from time of transformation. POEMS syndrome (polyneuropathy, organomegaly, endocrinopathy, monoclonal gammopathy and skin changes syndrome), amyloid Light-chain amyloidosis, monoclonal gammopathy of undetermined significance (MGUS), and MGUS with polyneuropathy have been registered in the database since January 1, 2014.

The Danish population is 5.5 million. Approximately 290 patients are diagnosed annually with MM, either as de novo

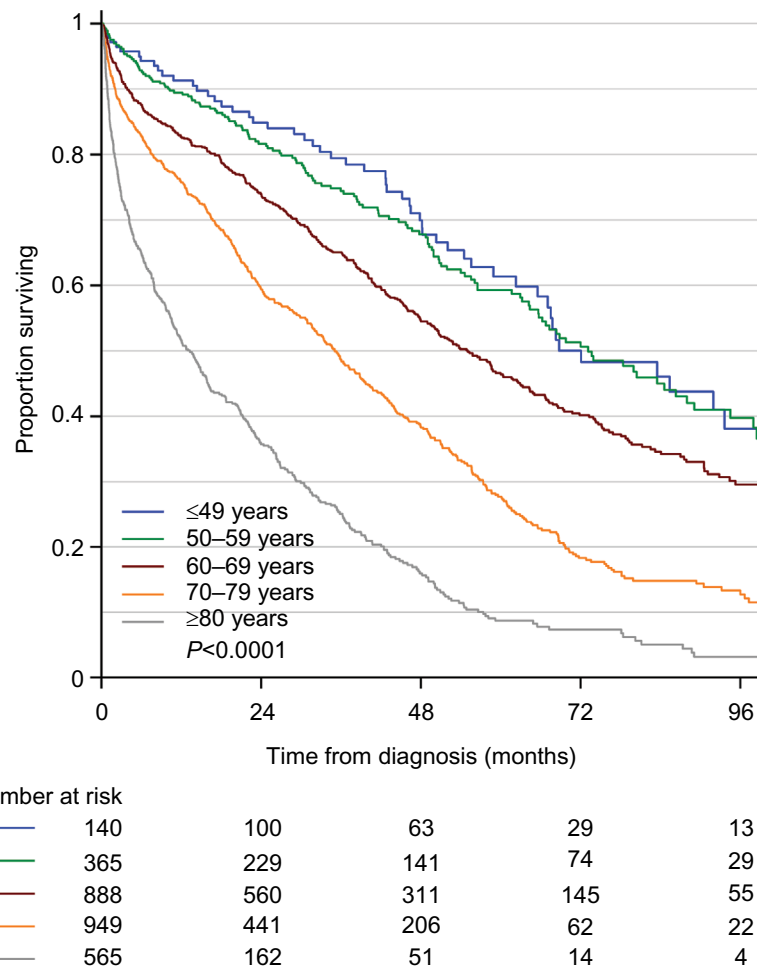


Figure 1 Age-dependent overall survival of 2,907 newly diagnosed Danish patients with symptomatic multiple myeloma.

Notes: The patients were registered in the Danish National Multiple Myeloma Registry between January 1, 2005, and June 30, 2015. Median follow-up is 59.5 months. The completeness of the registry is ~100%, and the survival curves therefore present “real life data” on multiple myeloma survival in the whole population.

or as progression from known MGUS, SMM, or solitary plasmacytoma.

In Denmark, treatment of hematological diseases is centralized to nine hematological departments. Six university hospitals perform high-dose treatment with autologous stem cell support and radiotherapy, and two centers perform allogeneic hematopoietic stem cell transplantation. All treatments are paid for by the public health care system. No hematological patients are treated in private hospitals or clinics.

Since 2009, the DMSG has developed nationwide clinical guidelines for diagnosis and treatment. The guideline for MM is revised annually. Most hematological clinics participate in clinical trials conducted by DMSG, the Nordic Myeloma Study Group (NMSG), or by the European Myeloma Network (EMN). Up to June 30, 2015, the following numbers of patients were registered in the registry: 2,907 MM patients, 485 SMM, 64 primary PCL, 103 solitary bone plasmacytomas, and 88 extrasosseous plasmacytomas.

The age-dependent overall survival of MM patients in the registry is shown in Figure 1. As expected, there is a large difference in overall survival according to age. In MM patients <60 years, the median survival exceeds 72 months, whereas it is <24 months for patients >80 years.

Variables

The main registered variables at diagnosis are shown in Table 1. All data are registered electronically on a central server owned by the Danish Health Regions. More than 95% are usually registered in the database within the first year after diagnosis, and after 2 years, the completeness is almost 100%.

In 2013–2014, DMSG performed a data validation study of registered data in the database. Ten percent of the registered patients at each department were randomly selected for independent on-site monitoring. A skilled trainee in hematology compared registered data with the patients’ medical records. In cases of inconsistency, a DMSG evaluation

Table 1 Main registered baseline parameters at diagnosis in multiple myeloma, smoldering MM, plasma cell leukemia, and solitary plasmacytoma in the Danish National Multiple Myeloma Registry

Patient related	Myeloma clonal characteristics	Myeloma complications	Prognostical parameters
Age	M-component subtype	Paraclinical findings	ISS
Sex	S-M-component concentration	Bone disease by skeletal survey	Beta-2-microglobulin
Personal identification number	U-M-component concentration	CT/MRI/PET/DEXA (if performed)	Albumin
Postal code	Light-chain subtype	Calcium	WHO performance status
Date of diagnosis	S-free light kappa lambda chain concentration and ratio	Creatinine	LDH
	Bone marrow plasma cell infiltration (%)	Hemoglobin	CRP
	Cytogenetics	Leukocyte count	
	Karyotype	Thrombocyte count	
	FISH abnormalities	U-protein	
		Clinical complications	
		Medullary compression	
		Bone fractures	
		Hemodialysis-dependent renal failure	
		Amyloidosis	
		Polyneuropathy	

Abbreviations: CRP, C-reactive protein; CT, computed tomography; DEXA, dual-energy X-ray absorptiometry; FISH, fluorescence in situ hybridization; ISS, International Staging System; LDH, lactate dehydrogenase; MM, multiple myeloma; MRI, magnetic resonance imaging; PET, positron emission tomography; WHO, World Health Organization.

Table 2 Main registered parameters concerning treatment, response to treatment and course of disease in multiple myeloma, plasma cell leukemia, and solitary plasmacytoma in the Danish National Multiple Myeloma Registry

At diagnosis	First-line treatment	Second-line treatment	Follow-up
Planned antimyeloma regimen	Received first-line treatment regimen	Date of disease progression after first-line therapy (PFS1)	Disease status
Planned radiotherapy	Date for start and end of treatment	Type of progression	Number of lines of treatment regimens
Planned bisphosphonates	Best response according to IMWG criteria	Received second-line treatment regimen	Date of death
		Date for start and end of second-line treatment	Cause of death
		Best response according to IMWG criteria	

Abbreviations: IMWG, International Myeloma Working Group; PFS1, first progression-free survival.

committee was consulted. Typical recurrent problems were that a given parameter at diagnosis, eg, serum C-reactive protein, was not taken at the date of diagnosis, which is defined as the date of bone marrow biopsy or tumor biopsy, but 10 days prior and that registered hemoglobin value was the value obtained after blood transfusion. The DMSG evaluation committee deemed these inconsistencies to be of minor importance. Overall, each parameter was correct in >95% of the cases, and the evaluation committee concluded that quality of data is high.

Follow-up

The flow in registrations is illustrated in Table 2. The registration sheet is filled in at diagnosis. It includes a summary of planned treatments and supportive care, eg, planned first-line therapy with cyclophosphamide–bortezomib–dexamethasone, stem cell harvest, and high-dose melphalan with stem cell support combined with radiation therapy and treatment with bisphosphonate.

The actual received first-line regimen and supportive treatment and achieved response to first-line treatment are

reported in the first-line treatment form at response evaluation after end of first-line treatment.

Progression-free survival, time to next treatment, second-line treatment regimen, and response to second-line treatment are reported on the second-line treatment form at response evaluation after end of second-line treatment. This scheme also includes information on type of relapse, eg, clinical relapse with progressive bone disease or renal failure, or paraclinical relapse with rise in M-component levels.

A follow-up scheme is reported at time of death or may be reported prior to death at the discretion of the department or physician. It includes a summary of the number of treatment lines administered and cause of death.

Examples of research

The annual DMMR reports from DMSG have documented high early mortality in newly diagnosed frail and elderly patients with MM ineligible for high-dose chemotherapy. Particularly, for the elderly population older than 80 years, the registry documents a high early mortality rate as illustrated in Figure 1. In an analysis of patients registered in 2005–2012,

330 patients (22.0%) out of 1,497 transplant ineligible patients died within 6 months of diagnosis. A skilled trainee reviewed all cases on-site. The majority of early deaths (50.9%) were caused by infections.¹⁴ As a consequence of these findings, DMSG started, in 2013, a randomized, controlled clinical trial to study the efficacy of prophylactic antibiotics within the first 6 months of diagnosis in elderly patients with MM (EudraCT number: 2012-004424-38).

Administrative issues and funding

The DMMR is owned and financed by the Danish Health Regions. The server is placed at and run by IT support from Competence Centre East in Copenhagen. Statisticians and clinical epidemiologists are used at the Competence Centre. Scientific hematological expertise and an administrative secretary are connected part time. A DMSG database committee reviews, comments, and writes the annual reports in collaboration with an epidemiologist and a statistician from the Competence Centre.

Conclusion

The DMMR is a population-based database eligible for clinical, epidemiological, and translational research. The database has a very high registration completeness, and a data validation study has shown high-quality data.

Acknowledgments

The authors would like to acknowledge the huge amount of work done by all DMSG members, investigators, and data managers at the Danish Hematological departments. This paper was funded by the Program for Clinical Research Infrastructure (PROCRIN) established by the Lundbeck Foundation and the Novo Nordisk Foundation and administered by the Danish Regions. The assistance by Vickie Svane Kristensen in preparation of the manuscript is very much appreciated. The data validation study has been supported by a grant from the Danish Cancer Society (grant no R94-A5689-B249).

Disclosure

The authors report no conflicts of interest in this work.

References

- Andersen TF, Madsen M, Jørgensen J, Møller-Jensen L, Olsen JH. The Danish National Hospital Register. A valuable source of data for modern health sciences. *Dan Med Bull.* 1999;46(3):263–268.
- Pedersen CB. The Danish Civil Registration System. *Scand J Public Health.* 2011;39(7 suppl):22–25.
- Attal M, Harousseau JL, Stoppa AM, et al. A prospective, randomized trial of autologous bone marrow transplantation and chemotherapy in multiple myeloma. Intergroupe Francais du Myelome. *N Engl J Med.* 1996;335(2):91–97.
- Lenhoff S, Hjorth M, Holmberg E, et al. Impact on survival of high-dose therapy with autologous stem cell support in patients younger than 60 years with newly diagnosed multiple myeloma: a population-based study. Nordic Myeloma Study Group. *Blood.* 2000;95(1):7–11.
- San Miguel JF, Schlag R, Khuageva NK, et al; VISTA Trial Investigators. Bortezomib plus melphalan and prednisone for initial treatment of multiple myeloma. *N Engl J Med.* 2008;359(9):906–917.
- Benboubker L, Dimopoulos MA, Dispenzieri A, et al; FIRST Trial Team. Lenalidomide and dexamethasone in transplant ineligible patients with myeloma. *N Engl J Med.* 2014;371(10):906–917.
- San Miguel J, Weisel K, Moreau P, et al. Pomalidomide plus low-dose dexamethasone versus high-dose dexamethasone alone for patients with relapsed and refractory multiple myeloma (MM-003): a randomised, open-label, phase 3 trial. *Lancet Oncol.* 2013;14(11):1055–1066.
- Stewart AK, Rajkumar SV, Dimopoulos MA, et al; ASPIRE Investigators. Carfilzomib, lenalidomide, and dexamethasone for relapsed multiple myeloma. *N Engl J Med.* 2015;372(2):142–152.
- San-Miguel JF, Hungria VT, Yoon SS, et al. Panobinostat plus bortezomib and dexamethasone versus placebo plus bortezomib and dexamethasone in patients with relapsed or relapsed and refractory multiple myeloma: a multicentre, randomised, double-blind phase 3 trial. *Lancet Oncol.* 2014;15(1):1195–1206.
- Lonial S, Dimopoulos M, Palumbo A, et al; ELOQUENT-2 Investigators. Elotuzumab therapy for relapsed or refractory multiple myeloma. *N Engl J Med.* 2015;373(7):621–631.
- Kildemoes HW, Sørensen HT, Hallas J. The Danish National Prescription Registry. *Scand J Public Health.* 2011;39(7 suppl):38–41.
- Hedegaard Rasmussen J. *DREAM Database. The National Labor Market Authority. Report No. 28.* Copenhagen: Ministry of Employment; 2012.
- Modin C, Bjerregaard B, Ørntoft T, Høgdall E; Faglig Følgegruppe for Dansk CancerBiobank. [Establishing the Danish CancerBiobank]. *Ugeskr Laeger.* 2010;172(19):1446–1450. Danish.
- Holmström MO, Gimsing P, Abildgaard N, et al. Causes of early death in multiple myeloma patients who are ineligible for high-dose therapy with hematopoietic stem cell support: a study based on the nationwide Danish Myeloma Database. *Am J Hematol.* 2015;90(4):E73–E74.

Clinical Epidemiology

Publish your work in this journal

Clinical Epidemiology is an international, peer-reviewed, open access, online journal focusing on disease and drug epidemiology, identification of risk factors and screening procedures to develop optimal preventative initiatives and programs. Specific topics include: diagnosis, prognosis, treatment, screening, prevention, risk factor modification,

Submit your manuscript here: <https://www.dovepress.com/clinical-epidemiology-journal>

systematic reviews, risk and safety of medical interventions, epidemiology and biostatistical methods, and evaluation of guidelines, translational medicine, health policies and economic evaluations. The manuscript management system is completely online and includes a very quick and fair peer-review system, which is all easy to use.