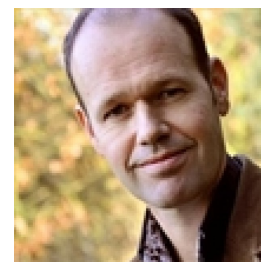


Francois Pouwer
Department of Psychology
Health and Medical Psychology
Email: fpouwer@health.sdu.dk
Phone: +4565504892



Employment

Department of Psychology

Odense M

1. Jan 2024 → present

Professor

Health and Medical Psychology

1. Jan 2024 → present

Research outputs

Trends in Incidence of Hospitalization for Hypoglycemia and Diabetic Ketoacidosis in Individuals With Type 1 or Type 2 Diabetes With and Without Severe Mental Illness in Denmark From 1996 to 2020: A Nationwide Study

Scheuer, S. H., Andersen, G. S., Carstensen, B., Diaz, L., Kosjerina, V., Lindekilde, N., Wild, S. H., Jackson, C. A., Pouwer, F., Benros, M. E. & Jørgensen, M. E., Jun 2024, In: *Diabetes Care*. 47, 6, p. 1065-1073

Development of a new health-related quality of life measure for people with diabetes who experience hypoglycaemia: the Hypo-RESOLVE QoL

Carlton, J., Powell, P. A., Broadley, M., de Galan, B. E., Heller, S., Comins, J., Rosilio, M., Pouwer, F., Gall, M-A., Child, C. J., McCrimmon, R. J. & Rowen, D., 22. May 2024, (E-pub ahead of print) In: *Diabetologia*.

Associations of clinical, psychological, and sociodemographic characteristics and ecological momentary assessment completion in the 10-week Hypo-METRICS study: Hypoglycaemia MEasurements ThResholds and ImpaCtS

Hypo-RESOLVE Consortium, 17. May 2024, (E-pub ahead of print) In: *Diabetic Medicine*. p. e15345

Towards the standardisation of adult person-reported outcome domains in diabetes research: A Consensus Statement development panel

Barnard-Kelly, K., Marrero, D., de Wit, M., Pouwer, F., Khunti, K., Hermans, N., Pierce, J. S., Laffel, L., Holt, R. I. G., Battelino, T., Naranjo, D., Fosbury, J., Fisher, L., Polonsky, W., Weissberg-Benchell, J., Hood, K. K., Schnell, O., Messer, L. H., Danne, T., Nimri, R., & 17 others Skovlund, S. E., Mader, J. K., Sherr, J. L., Schatz, D., O'Neill, S., Doble, E., Town, M., Lange, K., de Beaufort, C., Gonder-Frederick, L., Jaser, S. S., Liberman, A., Klonoff, D., ElSayed, N. A., Bannuru, R. R., Parkin, C. G. & Snoek, F., 15. May 2024, (E-pub ahead of print) In: *Diabetic Medicine*. p. e15332

Critical comments regarding the assessment of quality of life and the clinical impact of the POWER2DM intervention

Pouwer, F. & Deschênes, S., May 2024, In: *Diabetologia*. 67, 5, p. 954-955

A Comparison of the Rates of Clock-Based Nocturnal Hypoglycemia and Hypoglycemia While Asleep Among People Living with Diabetes: findings from the Hypo-METRICS study

Martine-Edith, G., Divilly, P., Zaremba, N., Søholm, U., Broadley, M., Baumann, P. M., Mahmoudi, Z., Gomes, M., Ali, N., Abbink, E. J., de Galan, B. E., Brøsen, J. M. B., Pedersen-Bjergaard, U., Vaag, A. A., McCrimmon, R., Renard, E., Heller, S., Evans, M., Cigler, M., Mader, J. K., & 4 others Speight, J., Pouwer, F., Amiel, S. & Choudhary, P., 17. Apr 2024, (E-pub ahead of print) In: *Diabetes Technology & Therapeutics*.

Associations between hypoglycemia awareness status and symptoms of hypoglycemia among adults with type 1 or insulin-treated type 2 diabetes using the Hypo-METRICS smartphone application

Martine-Edith, G., Zaremba, N., Divilly, P., Søholm, U., Broadley, M., Baumann, P. M., Mahmoudi, Z., Gomes, M., Ali, N., Abbink, E. J., de Galan, B. E., Brøsen, J. M. B., Pedersen-Bjergaard, U., Vaag, A. A., McCrimmon, R., Renard, E., Heller,

S., Evans, M., Cigler, M., Mader, J. K., & 4 others Amiel, S., Speight, J., Pouwer, F. & Choudhary, P., 12. Apr 2024, (E-pub ahead of print) In: *Diabetes Technology & Therapeutics*.

Childhood maltreatment and the risk of impaired glucose metabolism or type 2 diabetes in young adults: Findings from the Lifelines Cohort Study

Deschênes, S. S., Nearchou, F., McInerney, A., Schmitz, N., Pouwer, F. & Nouwen, A., 10. Apr 2024, (E-pub ahead of print) In: *Journal of Health Psychology*. p. 13591053241243285

Correction: Effect of an entry-to-care intervention on diabetes distress in individuals with newly diagnosed type 2 diabetes: a study protocol for a cluster-randomized trial

Hansen, S. H., Jensen, T. M., Petersen, G. S., Pouwer, F., Sønderlund, A. L. & Søndergaard, J., 4. Apr 2024, In: *Trials*. 25, 1, p. 233-233.

Reliability and validity of the Turkish version of the problem areas in diabetes (PAID) survey: Results from diabetes MILES - Turkey

Altıkardeş, D. K., Nefs, G., Hacışahinoğulları, H., Smeets, T. & Pouwer, F., Apr 2024, In: *Primary Care Diabetes*. 18, 2, p. 218-223

Effect of an entry-to-care intervention on diabetes distress in individuals with newly diagnosed type 2 diabetes: a study protocol for a cluster-randomized trial

Hansen, S. H., Jensen, T. M., Petersen, G. S., Pouwer, F., Sønderlund, A. L. & Søndergaard, J., 21. Mar 2024, In: *Trials*. 25, 10 p., 207.

The quest for wellness: How to optimise self-care strategies for diabetic foot management?

Pouwer, F., Perrin, B., Lavender, A., Najafi, B., Ismail, K. & Vileikyte, L., Mar 2024, In: *Diabetes/Metabolism Research and Reviews*. 40, 3, 8 p., e3751.

Hypoglycaemia symptom frequency, severity, burden, and utility among adults with type 1 diabetes and impaired awareness of hypoglycaemia: Baseline and 24-week findings from the HypoCOMPASS study

Søholm, U., Holmes-Truscott, E., Broadley, M., Amiel, S. A., Hendrieckx, C., Choudhary, P., Pouwer, F., Shaw, J. A. M. & Speight, J., Jan 2024, In: *Diabetic Medicine*. 41, 1, 9 p., e15231.

Psychosocial Care for People With Diabetic Neuropathy: Time for Action

Pouwer, F., Mizokami-Stout, K., Reeves, N. D., Pop-Busui, R., Tesfaye, S., Boulton, A. J. M. & Vileikyte, L., Jan 2024, In: *Diabetes Care*. 47, 1, p. 17-25

Associations between disordered eating behaviors and HbA1c in young people with type 1 diabetes: A systematic review and meta-analysis

Marks, K. P., Aalders, J., Liu, S., Broadley, M., Thastum, M., Jensen, M. B., Ibfelt, E. H., Birkebæk, N. H. & Pouwer, F., 2024, In: *Current Diabetes Reviews*. 20, 4, 23 p., e220823220144.

Associations between HbA1c reduction and change in depressive symptoms following glucose-lowering treatment in adults: A systematic review of intervention studies

Schmitt, A., Beran, M., Geraets, A., Iversen, M. M., Nefs, G., Nouwen, A., Pouwer, F., Huber, J. W. & T Schram, M., 2024, In: *Current Diabetes Reviews*. 20, 3, p. 66-83 18 p., e020623217607.

Diabetic Retinopathy Predicts Risk of Alzheimer's Disease: A Danish Registry-Based Nationwide Cohort Study

Pedersen, F. N., Stokholm, L., Pouwer, F., Hass Rubin, K., Peto, T., Frydkjær-Olsen, U., Thykjær, A. S., Andersen, N., Andresen, J., Bek, T., La Cour, M., Heegaard, S., Højlund, K., Kawasaki, R., Hajari, J. N., Ohm Kyvik, K., Laugesen, C. S., Schielke, K. C., Simó, R. & Grauslund, J., 2024, *Handbook of Prevention and Alzheimer's Disease*. Raji, C. A., Leng, Y., Ashford, J. W. & Khalsa, D. S. (eds.). IOS Press, p. 395-406 (Advances in Alzheimer's Disease, Vol. 10).

Psychosocial and Behavioural Aspects of Diabetes

Pouwer, F. & Speight, J., 2024, *Textbook of Diabetes*. Holt, R. I. G. & Flyvbjerg, A. (eds.). 6. ed. Wiley, p. 905-921

Review: de rol van psychische stoornissen bij precisiegeneeskunde voor diabetes

Kremers, S., Elders, P. J. M., Doedes, E., de Wit, M., Pouwer, F., Beulens, J. & Rutters, F., 2024, In: Nederlands Tijdschrift voor Diabetologie. 22, 1, p. 13-22

Structural and metabolic retinal changes associated with mild cognitive impairment in type 2 diabetes

Pedersen, F. N., Stokholm, L., Lois, N., Yang, D., Cheung, C. Y., Biessels, G. J., Exalto, L., Simó, R., Peto, T., Pouwer, F. & Grauslund, J., 1. Dec 2023, In: Diabetes. 72, 12, p. 1853-1863

Can online and app-based interventions be used by people with diabetes to reduce diabetes distress? A protocol for a scoping review

Andersen, C. M., Mathiesen, A. S., Pouwer, F., Mouritsen, J. D., Mathiasen, K. & Rothmann, M. J., 17. Nov 2023, In: BMJ Open. 13, 11, 5 p., e074015.

Responses to the Strengths and Difficulties Questionnaire predict HbA1c trajectories in children and adolescents with type 1 diabetes: A population-based study

Marks, K. P., Pouwer, F., Jensen, M. B., Ibfelt, E. H., Kristensen, L. J., Thastum, M. & Birkebæk, N. H., 1. Nov 2023, In: BMJ Open Diabetes Research & Care. 11, 6, 12 p., e003479.

Elevated risk of developing type 2 diabetes in people with a psychiatric disorder: What is the role of health behaviors and psychotropic medication?

Lindekilde, N., Diaz, L. J., Lasgaard, M., Henriksen, J. E., Scheuer, S. H., Andersen, G. S., Rubin, K. H. & Pouwer, F., Nov 2023, In: Journal of Diabetes and Its Complications. 37, 11, 9 p., 108591.

The impact of hypoglycaemia on quality of life among adults with type 1 diabetes: Results from "YourSAY: Hypoglycaemia"

Chatwin, H., Broadley, M., Hendrieckx, C., Carlton, J., Heller, S., Amiel, S. A., de Galan, B., McCrimmon, R. J., Pedersen-Bjergaard, U., Pouwer, F., Speight, J. & On behalf of the Hypo-RESOLVE Consortium, Nov 2023, In: Journal of Diabetes and Its Complications. 37, 11, 9 p., 108232.

Longitudinal bidirectional associations between diabetic retinopathy and diagnosed depression: Results from a Danish nationwide registry-based cohort study

Pedersen, F. N., Stokholm, L., Andersen, N., Andresen, J., Bek, T., Hajari, J. N., Heegaard, S., Højlund, K., Kawasaki, R., Möller, S., Laugesen, C. S., Schielke, K. C., Thykjær, A. S., Peto, T., Pouwer, F. & Grauslund, J., Oct 2023, In: Journal of Diabetes and Its Complications. 37, 10, 7 p., 108589.

Assessing the Content Validity, Acceptability, and Feasibility of the Hypo-METRICS App: Survey and Interview Study

Søholm, U., Zaremba, N., Broadley, M., Axelsen, J. L., Divilly, P., Martine-Edith, G., Amiel, S. A., Mader, J. K., Pedersen-Bjergaard, U., McCrimmon, R. J., Renard, E., Evans, M., de Galan, B., Heller, S., Hendrieckx, C., Choudhary, P., Speight, J., Pouwer, F. & Hypo-RESOLVE Consortium, 29. Sept 2023, In: JMIR Diabetes. 8, 14 p., e42100.

Patient-reported outcomes for people with diabetes: What and how to measure? A narrative review

Terwee, C. B., Elders, P. J. M., Blom, M. T., Beulens, J. W., Rolandsson, O., Rogge, A. A., Rose, M., Harman, N., Williamson, P. R., Pouwer, F., Mookink, L. B. & Rutters, F., Aug 2023, In: Diabetologia. 66, 8, p. 1357-1377

Effectiveness of educational and behavioural interventions for reducing fear of hypoglycaemia among adults with type 1 diabetes: Systematic review and meta-analyses

Chatwin, H., Broadley, M., de Galan, B., Bazelmans, E., Speight, J., Pouwer, F. & Nefs, G., May 2023, In: Diabetic Medicine. 40, 5, 17 p., e15071.

Reduced heart rate variability in people with type 1 diabetes and elevated diabetes distress: Results from the longitudinal observational DIA-LINK1 study

Ehrmann, D., Chatwin, H., Schmitt, A., Soeholm, U., Kulzer, B., Axelsen, J. L., Broadley, M., Haak, T., Pouwer, F. & Hermanns, N., Apr 2023, In: Diabetic Medicine. 40, 4, 11 p., e15040.

Psychosocial Aspects of Diabetic Neuropathy: From Description to Interventions

Vileikyte, L. & Pouwer, F., 21. Mar 2023, *Diabetic Neuropathy: Advances in Pathophysiology and Clinical Management*. Tesfaye, S., Gibbons, C. H., Malik, R. A. & Veves, A. (eds.). 3. ed. Humana Press, p. 221-236 (Contemporary Diabetes).

Psychometric properties of an innovative smartphone application to investigate the daily impact of hypoglycemia in people with type 1 or type 2 diabetes: The Hypo-METRICS app

Søholm, U., Broadley, M., Zaremba, N., Divilly, P., Nefs, G., Carlton, J., Mader, J. K., Baumann, P. M., Gomes, M., Martine-Edith, G., Pollard, D. J., Rath, D., Heller, S., Pedersen-Bjergaard, U., McCrimmon, R. J., Renard, E., Evans, M., de Galan, B., Forkmann, T., Amiel, S. A., & 5 othersHendrieckx, C., Speight, J., Choudhary, P., Pouwer, F. & Hypo-RESOLVE Consortium, 17. Mar 2023, In: PLOS ONE. 18, 3, 19 p., e0283148.

Adherence in Diabetes Questionnaire (ADQ) score as predictor of 11-year HbA1c trajectories in children and adolescents with type 1 diabetes: A population-based longitudinal study

Marks, K. P., Birkebæk, N. H., Pouwer, F., Ibfelt, E. H., Thastum, M. & Jensen, M. B., Mar 2023, In: Diabetes Research and Clinical Practice. 197, 8 p., 110558.

Producing a preference-based quality of life measure to quantify the impact of hypoglycaemia on people living with diabetes: A mixed-methods research protocol

Carlton, J., Powell, P., Rowen, D., Broadley, M., Pouwer, F., Speight, J., Heller, S., Gall, M-A., Rosilio, M., Child, C. J., Comins, J., McCrimmon, R. J., de Galan, B., Brazier, J. & Hypo-RESOLVE Consortium, Mar 2023, In: Diabetic Medicine. 40, 3, 9 p., e15007.

Lower education and immigrant background are associated with lower participation in a diabetes education program - Insights from adult patients in the Outcomes & Multi-morbidity In Type 2 diabetes cohort (OMIT)

Strandberg, R. B., Nilsen, R. M., Pouwer, F., Igländ, J., Forster, R. B., Jennum, A. K., Buhl, E. S. & Iversen, M. M., Feb 2023, In: Patient Education and Counseling. 107, 107577.

Prevalence, associations and health outcomes of binge eating in adults with type 1 or type 2 diabetes: Results from Diabetes MILES – The Netherlands

Huisman, S. D., Hendrieckx, C., Bot, M., Pouwer, F. & Nefs, G., Jan 2023, In: Diabetic Medicine. 40, 1, 11 p., e14953.

Associations Between Metabolic and Structural Retinal Parameters and Depression Score in Individuals with Type 2 Diabetes

Pedersen, F. N., Stokholm, L., Lois, N., Yang, D., Cheung, C., Simó, R., Peto, T., Pouwer, F. & Grauslund, J., 2023, In: European Journal of Ophthalmology. 33, 1 Suppl.

A Systematic Review of Instruments Measuring the Division of Care Responsibilities between Children with Type 1 Diabetes and their Parents

Aalders, J., Nefs, G., Hartman, E., A Nguyen, L., Winterdijk, P., van Mil, E., Aanstoot, H-J. & Pouwer, F., 2023, In: Current Diabetes Reviews. 19, 5, p. 59-93 35 p., e100522204559.

Trait Anger, Hostility, and the Risk of Type 2 Diabetes and Diabetes-Related Complications: A Systematic Review of Longitudinal Studies

Mohseni, M., Lindekilde, N., Forget, G., Burns, R. J., Pouwer, F., Schmitz, N. & Deschênes, S. S., 2023, In: Current Diabetes Reviews. 19, 4, p. 73-82 e290322202789.

The role of mental disorders in precision medicine for diabetes: a narrative review

Kremers, S. H. M., Wild, S. H., Elders, P. J. M., Beulens, J. W. J., Campbell, D. J. T., Pouwer, F., Lindekilde, N., de Wit, M., Lloyd, C. & Rutters, F., Nov 2022, In: Diabetologia. 65, 11, p. 1895-1906

Consistent Effects of Hypoglycemia on Cognitive Function in People With or Without Diabetes

Verhulst, C. E. M., Fabricius, T. W., Nefs, G., Kessels, R. P. C., Pouwer, F., Teerenstra, S., Tack, C. J., Broadley, M. M., Kristensen, P. L., McCrimmon, R. J., Heller, S., Evans, M. L., Pedersen-Bjergaard, U., de Galan, B. E. & Hypo-RESOLVE Consortium, 1. Sept 2022, In: Diabetes Care. 45, 9, p. 2103-2110

Flourishing mental health and lifestyle behaviours in adults with Type 1 and Type 2 Diabetes Mellitus: results from the Diabetes MILES – The Netherlands Study

Polhuis, K. C. M. M., van Bennekom, E., Bot, M., Nefs, G., Vaandrager, L., Habibovic, M., Geleijnse, J. M., Pouwer, F. & Soedamah-Muthu, S. S., Sept 2022, In: Journal of Psychosomatic Research. 160, 8 p., 110950.

Hypo-METRICS: Hypoglycaemia - MEasurement, ThResholds and ImpaCtS - A multi-country clinical study to define the optimal threshold and duration of sensor-detected hypoglycaemia that impact the experience of hypoglycaemia, quality of life and health economic outcomes: the study protocol

Divilly, P., Zaremba, N., Mahmoudi, Z., S holm, U., Pollard, D. J., Broadley, M., Abbink, E. J., de Galan, B., Pedersen-Bjergaard, U., Renard, E., Evans, M., Speight, J., Brennan, A., McCrimmon, R. J., M llenborn, M., Heller, S., Seibold, A., Mader, J. K., Amiel, S. A., Pouwer, F., & 2 othersChoudhary, P. & Hypo-RESOLVE Consortium, Sept 2022, In: Diabetic Medicine. 39, 9, 11 p., e14892.

The 12-Item Hypoglycemia Impact Profile (HIP12): psychometric validation of a brief measure of the impact of hypoglycemia on quality of life among adults with type 1 or type 2 diabetes

Broadley, M., Chatwin, H., S holm, U., Amiel, S. A., Carlton, J., De Galan, B. E., Hendriekx, C., McCrimmon, R. J., Skovlund, S. E., Pouwer, F., Speight, J. & Hypo-RESOLVE Consortium, 17. Aug 2022, In: BMJ Open Diabetes Research & Care. 10, 4, 13 p., e002890.

Severe mental illness and the risk of diabetes complications. A nationwide register-based cohort study

Scheuer, S. H., Kosjerina, V., Lindekilde, N., Pouwer, F., Carstensen, B., J rgensen, M. E., Benros, M. E. & Andersen, G. S., Aug 2022, In: The Journal of Clinical Endocrinology & Metabolism. 107, 8, p. e3504-e3514

373-P: A Systematic Review and Meta-analysis of the Impact of Acute Hypoglycemia on Cognitive Function in Adults with Type 1 Diabetes

MELANIE, M. BROADLEY., HANNAH, CHATWIN., UFFE, SOEHOLM., Axelsen, J. L., STEPHANIE, A. AMIEL., PRATIK, CHOUDHARY., BASTIAAN, E. DE. GALAN., THERESE, W. FABRICIUS., SIMON, R. HELLER., CHRISTEL, HENDRIECKX., RORY, J. MCCRIMMON., GIESJE, NEFS., ULRIK, PEDERSEN-BJERGAARD., CLEMENTINE, E. VERHULST., JANE, SPEIGHT., FRANS, POWWER. & THE, HYPO-RESOLVE. CONSORTIUM., Jun 2022, In: Diabetes. 71, Suppl. 1, 373-P.

Bidirectional associations between diabetic retinopathy and major depression: results from a Danish nationwide registry-based cohort study

Pedersen, F. N., Pouwer, F., Stockholm, L., Peto, T., Grauslund, J. & on behalf of OASIS Study Group, Jun 2022, In: Investigative Ophthalmology & Visual Science. 63, 7

Correction to: The suitability of patient-reported outcome measures used to assess the impact of hypoglycaemia on quality of life in people with diabetes: a systematic review using COSMIN methods (Diabetologia, (2021), 64, 6, (1213-1225), 10.1007/s00125-021-05382-x)

Carlton, J., Leaviss, J., Pouwer, F., Hendriekx, C., Broadley, M. M., Clowes, M., McCrimmon, R. J., Heller, S. R. & Speight, J., Jun 2022, In: Diabetologia. 65, 6, p. 1063

The Impact of Hypoglycaemia in Children and Adolescents with Type 1 Diabetes on Parental Quality of Life and Related Outcomes: A Systematic Review

Valdersdorf Jensen, M., Broadley, M., Speight, J., Chatwin, H., Scope, A., Cantrell, A., Heller, S., de Galan, B. E., Hendriekx, C., Pouwer, F. & Hypo-RESOLVE Consortium, May 2022, In: Pediatric Diabetes. 23, 3, p. 390-405

Novel Visual Tool to Assess the Prevalence of Hypoglycaemia Symptoms in Type 1 Diabetes

Martine-Edith, G., Divilly, P., Zaremba, N., Soeholm, U., Broadley, M., De Galan, B., Pedersen-Bjergaard, U., Mccrimmon, R., Renard, E., Heller, S., Evans, M., Mader, J., Speight, J., Seibold, A., Amiel, S., Pouwer, F. & Choudhary, P., 25. Apr 2022, In: Diabetes Technology & Therapeutics. 24, Suppl. 1, p. A71-A72

Psychometric Properties of Hypo-Metrics: A Smartphone Application to Investigate the Daily Impact of Hypoglycaemia

Soeholm, U., Broadley, M., Divilly, P., Zaremba, N., Nefs, G., Carlton, J., Mader, J., Baumann, P., Gomes, M., Martine-Edith, G., Rath, D., Heller, S., Pedersen-Bjergaard, U., Mccrimmon, R., Renard, E., Evans, M., De Galan, B., Forkmann, T., Amiel, S., Hendriekx, C., & 3 othersSpeight, J., Choudhary, P. & Pouwer, F., 25. Apr 2022, In: Diabetes Technology & Therapeutics. 24, Suppl. 1, p. A216-A217

How to identify clinically significant diabetes distress using the Problem Areas in Diabetes (PAID) scale in adults with diabetes treated in primary or secondary care? Evidence for new cut points based on latent class analyses

de Wit, M., Pouwer, F. & Snoek, F. J., 11. Mar 2022, In: BMJ Open. 12, 3, e056304.

Risk of Developing Type 2 Diabetes in Individuals With a Psychiatric Disorder: A Nationwide Register-Based Cohort Study
Lindekilde, N., Scheuer, S. H., Diaz, L. J., Rubin, K. H., Plana-Ripoll, O., Henriksen, J. E., Lasgaard, M., Andersen, G. S. & Pouwer, F., 1. Mar 2022, In: *Diabetes Care*. 45, 3, p. 724-733

Prevalence of type 2 diabetes in psychiatric disorders: an umbrella review with meta-analysis of 245 observational studies from 32 systematic reviews

Lindekilde, N., Scheuer, S. H., Rutters, F., Knudsen, L., Lasgaard, M., Rubin, K. H., Henriksen, J. E., Kivimäki, M., Andersen, G. S. & Pouwer, F., Mar 2022, In: *Diabetologia*. 65, 3, p. 440-456

Diabetes Mellitus

Pouwer, F. & Broadley, M., 1. Feb 2022, *Textbook of Applied Medical Psychology: A Multidisciplinary Approach*. Pedersen, S. S., Roessler, K. K., Elmose Andersen, T., Johnsen, A. T. & Pouwer, F. (eds.). Odense: Syddansk Universitetsforlag, p. 109-135

Investigating the day-to-day impact of hypoglycaemia in adults with type 1 or type 2 diabetes: design and validation protocol of the Hypo-METRICS application

Søholm, U., Broadley, M., Zaremba, N., Divilly, P., Nefs, G., Mahmoudi, Z., de Galan, B., Pedersen-Bjergaard, U., Brennan, A., Pollard, D. J., McCrimmon, R. J., A Amiel, S., Hendrieckx, C., Speight, J., Choudhary, P., Pouwer, F. & Hypo-RESOLVE Consortium, 1. Feb 2022, In: *BMJ Open*. 12, 2, 11 p., e051651.

Preface

Pedersen, S. S., Roessler, K. K., Andersen, T. E., Johnsen, A. T. & Pouwer, F., 1. Feb 2022, *Textbook of Applied Medical Psychology: A Multidisciplinary Approach*. Pedersen, S. S., Roessler, K. K., Elmose Andersen, T., Johnsen, A. T. & Pouwer, F. (eds.). Odense: Syddansk Universitetsforlag, p. 9-10

The Rise of a New Specialisation: Medical Psychology. A Historical Overview

Roessler, K. K., Kooy, R. E. & Pouwer, F., 1. Feb 2022, *Textbook of Applied Medical Psychology: A Multidisciplinary Approach*. Pedersen, S. S., Roessler, K. K., Elmose Andersen, T., Johnsen, A. T. & Pouwer, F. (eds.). Odense: Syddansk Universitetsforlag, p. 11-34

The bidirectional longitudinal association between depressive symptoms and HbA1c: a systematic review and meta-analysis

Beran, M., Muzambi, R., Geraets, A., Albertorio, J., Adriaanse, M. C., Iversen, M. M., Kokoszka, A., Nefs, G., Nouwen, A., Pouwer, F., Huber, J. W., Schmitt, A., Schram, M. T. & European Depression in Diabetes (EDID) Research Consortium, Feb 2022, In: *Diabetic Medicine*. 39, 2, e14671.

Changes in Quality of Life Following Hypoglycaemia in Adults with Type 2 Diabetes: A Systematic Review of Longitudinal Studies

Matlock, K. A., Broadley, M., Hendrieckx, C., Clowes, M., Sutton, A., Heller, S. R., de Galan, B. E., Pouwer, F., Speight, J. & Hypo-RESOLVE Consortium, Jan 2022, In: *Diabetic Medicine*. 39, 1, 18 p., e14706.

Prevalence of and risk factors for sexual dysfunctions in adults with type 1 or type 2 diabetes: Results from Diabetes MILES - Flanders

Van Cauwenberghe, J., Enzlin, P., Nefs, G., Ruige, J., Hendrieckx, C., De Block, C. & Pouwer, F., Jan 2022, In: *Diabetic Medicine*. 39, 1, e14676.

Unmet Support Needs Relating to Hypoglycaemia Among Adults with Type 1 Diabetes: Results of a Multi-Country Web-Based Qualitative Study

Chatwin, H., Broadley, M., Hendrieckx, C., Carlton, J., Heller, S., Amiel, S. A., de Galan, B. E., Hermanns, N., Finke-Groene, K., Speight, J., Pouwer, F. & Hypo-RESOLVE Consortium, Jan 2022, In: *Diabetic Medicine*. 39, 1, e14727.

Depression and anxiety in adolescents with type 1 diabetes and their parents

Nguyen, L. A., Pouwer, F., Lodder, P., Hartman, E., Winterdijk, P., Aanstoot, H-J. & Nefs, G., 2022, In: *Pediatric Research*. 91, 1, p. 188-196

Diabetic Retinopathy Predicts Risk of Alzheimer's Disease: A Danish Registry-Based Nationwide Cohort Study

Pedersen, F. N., Stokholm, L., Pouwer, F., Hass Rubin, K., Peto, T., Frydkjær-Olsen, U., Thykjær, A. S., Andersen, N., Andresen, J., Bek, T., La Cour, M., Heegaard, S., Højlund, K., Kawasaki, R., Hajari, J. N., Ohm Kyvik, K., Laugesen, C. S., Schielke, K. C., Simó, R. & Grauslund, J., 2022, In: Journal of Alzheimer's disease : JAD. 86, 1, p. 451-460

Textbook of Applied Medical Psychology: A Multidisciplinary Approach

Pedersen, S. S. (ed.), Roessler, K. K. (ed.), Andersen, T. E. (ed.), Johnsen, A. T. (ed.) & Pouwer, F. (ed.), 2022, Odense: Syddansk Universitetsforlag. 639 p.

Facilitating Participation in Cardiovascular Preventive Initiatives for Patients With Diabetes: Vascular Nursing

Dahl, M., Søndergaard, S. F., Diederichsen, A., Pouwer, F., Pedersen, S. S., Søndergaard, J. & Lindholt, J. S., Dec 2021, In: European Journal of Vascular and Endovascular Surgery. 62, 6, 1 p., e88.

Mindfulness in Relation to Diet Quality in Adults with Type 1 and Type 2 Diabetes: Results from Diabetes MILES-The Netherlands

Liu, S., Nyklíček, I., Pouwer, F., Speight, J., Bot, M., Nefs, G. & Soedamah-Muthu, S. S., Dec 2021, In: Mindfulness. 12, 12, p. 2943-2954

Overeating, binge eating, quality of life, emotional difficulties, and HbA1c in adolescents with type 1 diabetes: a Danish national survey

Marks, K. P., Thastum, M., Jensen, M. B., Kristensen, L. J., Mose, A. H., Pouwer, F. & Birkebæk, N. H., Dec 2021, In: Diabetes Research and Clinical Practice. 182, 109150.

The impact of hypoglycemia on quality of life and related outcomes in children and adolescents with type 1 diabetes: A systematic review

Coolen, M., Broadley, M., Hendrieckx, C., Chatwin, H., Clowes, M., Heller, S., de Galan, B. E., Hypo-RESOLVE Consortium, Speight, J. & Pouwer, F., Dec 2021, In: PLOS ONE. 16, 12, e0260896.

The Impact of Hypoglycaemia on the Quality of Life of Parents to Children and Young Adults with Type 1 Diabetes - A Qualitative Study

Jensen, M. V., Broadley, M., Speight, J., Pouwer, F. & On behalf of the HypoRESOLVE Consortium, 25. Nov 2021, In: International Journal of Qualitative Methods. 20, p. 93 1 p., SC-PO-A1.03.

Empowerment in patient-provider interactions: from theory to generic questionnaire

Marqvorsen, E. H. S., Lund, L., Mathiesen, A. S., Winkley, K., Rasmussen, B., Thomsen, T., Pouwer, F., Rothmann, M., Jorgensen, R., Olesen, M. L., Biener, S., Due-Christensen, M., Husted, G., Weis, J. & Zoffmann, V., 1. Oct 2021, In: Quality of Life Research. 30, Suppl. 1, p. S94 3021.

The impact of hypoglycaemia on the quality of life of family members of adults with type 1 or type 2 diabetes - a qualitative systematic review

Jensen, M. V., Broadley, M., Speight, J., Scope, A., Preston, L., Heller, S., de Galan, B. E., Pouwer, F., Hendrieckx, C. & Hypo-RESOLVE Consortium, Oct 2021, In: Diabetic Medicine. 38, 10, p. e14666 e14666.

The impact of hypoglycaemia in children or adolescents with type 1 diabetes mellitus on the quality of life of parents and caregivers – a systematic review

Jensen, M. V., Broadley, M., Speight, J., Hypo-RESOLVE Consortium & Pouwer, F., Sept 2021.

'Never again will I be carefree': a qualitative study of the impact of hypoglycemia on quality of life among adults with type 1 diabetes

Chatwin, H., Broadley, M., Valdersdorf Jensen, M., Hendrieckx, C., Carlton, J., Heller, S., Amiel, S., de Galan, B., Hermanns, N., Finke-Groene, K., Speight, J. & Pouwer, F., 16. Aug 2021, In: BMJ Open Diabetes Research & Care. 9, 1, e002322.

Does nocturnal hypoglycaemia really improve quality of life?

Søholm, U., Broadley, M. M., Choudhary, P., Zaremba, N., Amiel, S. A., Speight, J. & Pouwer, F., Aug 2021, In: Diabetologia. 64, 8, p. 1893-1894

Hypoglycaemia and diabetes-specific quality of life in adolescents with type 1 diabetes

Coolen, M., Aalders, J., Broadley, M., Aanstoot, H-J., Hartman, E., Hendrieckx, C., Nefs, G. & Pouwer, F., Aug 2021, In: Diabetic Medicine. 38, 8, e14565.

The Impact of Hypoglycaemia on the Quality of Life of Parents of Children, Adolescents and Young Adults with Type 1 Diabetes

Jensen, M. V., Broadley, M., Pouwer, F. & Speight, J., Jul 2021.

Data on diabetes-specific distress are needed to improve the quality of diabetes care

Speight, J., Hermanns, N., Ehrmann, D., Psychosocial Aspects of Diabetes Study Group of the European Association for the Study of Diabetes & Pouwer, F., 5. Jun 2021, In: Lancet. 397, 10290, p. 2149 1 p.

Diabetic retinopathy independently predicts five-year risk of Alzheimer's disease

Pedersen, F., Stokholm, L., Pouwer, F., Rubin, K., Peto, T., Frydkjaer-Olsen, U., Thykjaer, A. S., Simo, R. & Grauslund, J., 1. Jun 2021, In: Investigative Ophthalmology & Visual Science. 62, 8

Prevalence and course of mood and anxiety disorders, and correlates of symptom severity in adolescents with type 1 diabetes: Results from Diabetes LEAP

Nguyen, L. A., Pouwer, F., Winterdijk, P., Hartman, E., Nuboer, R., Sas, T., de Kruijff, I., Bakker-Van Waarde, W., Aanstoot, H-J. & Nefs, G., Jun 2021, In: Pediatric Diabetes. 22, 4, p. 638-648

Psychiatric disorders as risk factors for type 2 diabetes: an umbrella review of systematic reviews with and without meta-analyses

Lindekilde, N., Rutters, F., Erik Henriksen, J., Lasgaard, M., Schram, M. T., Hass Rubin, K., Kivimäki, M., Nefs, G. & Pouwer, F., Jun 2021, In: Diabetes Research and Clinical Practice. 176, 14 p., 108855.

The suitability of patient-reported outcome measures used to assess the impact of hypoglycaemia on quality of life in people with diabetes: a systematic review using COSMIN methods

Carlton, J., Leaviss, J., Pouwer, F., Hendrieckx, C., Broadley, M. M., Clowes, M., McCrimmon, R. J., Heller, S. R. & Speight, J., Jun 2021, In: Diabetologia. 64, 6, p. 1213-1225

Rates of and risks for sexual dysfunctions in people with diabetes mellitus: results from diabetes miles - flanders

Van Cauwenberghe, J., De Block, C., Ruige, J., Speight, J., Hendrieckx, C., Nefs, G. & Pouwer, F., 31. May 2021, In: Diabetes Technology & Therapeutics. 23, Suppl. 2, p. A64 O109.

Medication Intake, Perceived Barriers, and Their Correlates Among Adults With Type 1 and Type 2 Diabetes: Results From Diabetes MILES – The Netherlands

Hogervorst, S., Adriaanse, M. C., Hugtenburg, J. G., Bot, M., Speight, J., Pouwer, F. & Nefs, G., Apr 2021, In: Frontiers in Clinical Diabetes and Healthcare. 2, p. 645609 8 p.

The division and transfer of care responsibilities in paediatric type 1 diabetes: A qualitative study on parental perspectives

Aalders, J., Hartman, E., Pouwer, F., Winterdijk, P., van Mil, E., Roeleveld-Versteegh, A., Mommertz-Mestrum, E., Aanstoot, H-J. & Nefs, G., Apr 2021, In: Journal of Advanced Nursing. 77, 4, p. 1968-1979

The Impact of Hypoglycaemia on Quality of Life Outcomes Among Adults with Type 1 Diabetes: A Systematic Review

Chatwin, H., Broadley, M., Speight, J., Cantrell, A., Sutton, A., Heller, S., de Galan, B., Hendrieckx, C., Pouwer, F. & Hypo-RESOLVE Consortium, Apr 2021, In: Diabetes Research and Clinical Practice. 174, 108752.

Symptoms of depression and anxiety in adults with type 1 diabetes: Associations with self-care behaviour, glycaemia and incident complications over four years – Results from diabetes MILES–Australia

Schmitt, A., McSharry, J., Speight, J., Holmes-Truscott, E., Hendrieckx, C., Skinner, T., Pouwer, F. & Byrne, M., 1. Mar 2021, In: Journal of Affective Disorders. 282, p. 803-811

Facilitating participation in cardiovascular preventive initiatives among people with diabetes: a qualitative study

Dahl, M., Søndergaard, S. F., Diederichsen, A., Pouwer, F., Pedersen, S. S., Søndergaard, J. & Lindholt, J., 22. Jan 2021, In: BMC Public Health. 21, 1, 203.

Comment on van Duinkerken et al. Biopsychosocial factors associated with a current depressive episode in diabetes: the ELSA-Brasil study

Chatwin, H., Broadley, M. & Pouwer, F., Jan 2021, In: Diabetic Medicine. 38, 1, p. e14418 e14418.

Depression Is Associated With Progression of Diabetic Nephropathy in Type 1 Diabetes

Ahola, A. J., Harjutsalo, V., Forsblom, C., Pouwer, F., Groop, P-H. & FinnDiane Study Group, Jan 2021, In: Diabetes Care. 44, 1, p. 174-180

Diabetic Retinopathy and Risk of Major Depression: Bidirectional Results from a Danish Register-Based Nationwide Cohort Study

Pedersen, F. N., Pouwer, F., Stokholm, L., Peto, T., Grauslund, J. & on behalf of the OASIS Study Group, 2021, In: European Journal of Ophthalmology. 31, 2 Suppl., p. 28 1 p.

Diabetic retinopathy independently predicts five-year risk of Alzheimer's disease

Pedersen, F. N., Stokholm, L., Pouwer, F., Peto, T., Frydkjær-Olsen, U., Suhr Thykjær, A., Simó, R., Grauslund, J. & on behalf of OASIS Study Group, 2021.

Psychosocial Moderators of the Impact of Diabetes Stigma: Results From the Second Diabetes MILES - Australia (MILES-2) Study

Holmes-Truscott, E., Ventura, A. D., Thuraisingam, S., Pouwer, F. & Speight, J., Nov 2020, In: Diabetes Care. 43, 11, p. 2651-2659

Correlates of fear of hypoglycemia among patients with type 1 and 2 diabetes mellitus in outpatient hospitals in Zambia

Hapunda, G., Abubakar, A., Pouwer, F. & van de Vijver, F., Oct 2020, In: International Journal of Diabetes in Developing Countries. 40, 4, p. 619-626

Prevalence and correlates of diabetes distress, perceived stress and depressive symptoms among adults with early-onset Type 2 diabetes: cross-sectional survey results from the Danish DD2 study

Bo, A., Pouwer, F., Juul, L., Nicolaisen, S. K. & Maindal, H. T., Oct 2020, In: Diabetic Medicine. 37, 10, p. 1679-1687

Psykisk sygdom øger risikoen for udvikling af type 2 diabetes

Pouwer, F., Henriksen, J. E. & Lindekilde, N., Oct 2020, In: Best Practice Nordic.

Assessment of self-care behaviours in adults with type 1 diabetes: Development and validation of the SCB-T1D questionnaire

Mansell, P., Bond, R., Pouwer, F., Elliott, J., Hopkins, D., Vallis, M., Speight, J., Heller, S., Lawton, J. & Cooke, D., Sept 2020, In: Diabetic Medicine. 37, Supplement 1, p. 112 1 p., P292.

The role of Parental Support for Emerging Adults with Type 1 Diabetes: A Scoping Review

Johansen, C. B., Rothman, M. J., Andersen, A., Beck-Nielsen, H. & Pouwer, F., Sept 2020, In: Pediatric Diabetes. 21, 6, p. 995-1030

Depressive and anxiety symptoms and following of the Dutch Dietary Guidelines 2015 in adults with diabetes: Results from Diabetes MILES-The Netherlands

Vogtschmidt, Y. D., Nefs, G., Speight, J., Bot, M., Pouwer, F. & Soedamah-Muthu, S. S., 8. Aug 2020, In: Journal of Psychosomatic Research. 135, 110160.

Back to the future: 25 years of 'Guidelines for encouraging psychological well-being' among people affected by diabetes

Speight, J., Hendrieckx, C., Pouwer, F., Skinner, T. C. & Snoek, F. J., Aug 2020, In: Diabetic Medicine. 37, 8, p. 1225-1229

Social Support and Self-care Outcomes in Adults with Diabetes: The Mediating Effects of Self-efficacy and Diabetes Distress. Results of the Second Diabetes MILES - Australia (MILES-2) Study

Chan, C. K. Y., Cockshaw, W., Smith, K., Holmes-Truscott, E., Pouwer, F. & Speight, J., Aug 2020, In: Diabetes Research and Clinical Practice. 166, 108314.

Positive facilitators of diabetes management in emerging adults with type 1 diabetes—A qualitative analysis of blogs

Johansen, C. B., Pouwer, F., Beck-Nielsen, H. & Rothmann, M. J., Jul 2020, In: Endocrinology, Diabetes & Metabolism. 3, 3, 10 p., e00161.

'I wish my health professionals understood that it's not just all about your HbA1c !'. Qualitative responses from the second Diabetes MILES - Australia (MILES-2) study

Litterbach, E., Holmes-Truscott, E., Pouwer, F., Speight, J. & Hendrickx, C., Jun 2020, In: Diabetic Medicine. 37, 6, p. 971-981

Psychological Correlates of Disordered Eating in Youth with Type 1 Diabetes: Results from Diabetes MILES Youth - Australia

Araia, E., King, R. M., Pouwer, F., Speight, J. & Hendrickx, C., Jun 2020, In: Pediatric Diabetes. 21, 4, p. 664-672

Reducing the burden of hypoglycaemia in people with diabetes through increased understanding: design of the Hypoglycaemia Redefining Solutions for Better Lives (Hypo-RESOLVE) project

de Galan, B. E., McCrimmon, R. J., Ibberson, M., Heller, S. R., Choudhary, P., Pouwer, F., Speight, J., Carlton, J., Pieber, T. R., Rosilio, M., Tack, C. J., Müllenborn, M. & Hypo-RESOLVE Consortium, Jun 2020, In: Diabetic Medicine. 37, 6, p. 1066-1073

The prevalence of type 2 diabetes in people with psychiatric disorders: an umbrella review protocol

Lindekilde, N., Scheuer, S., Rutters, F., Henriksen, J. E., Rubin, K. H., Lasgaard, M., Andersen, G. S. & Pouwer, F., 4. May 2020, In: Systematic Reviews. 9, 4 p., 101.

Prevalence of insomnia (symptoms) in T2D and association with metabolic parameters and glycemic control: meta-analysis

Koopman, A. D. M., Beulens, J. W., Dijkstra, T., Pouwer, F., Bremmer, M. A., van Straten, A. & Rutters, F., 1. Mar 2020, In: The Journal of Clinical Endocrinology & Metabolism. 105, 3, dgz065.

How 25 years of psychosocial research has contributed to a better understanding of the links between depression and diabetes

Pouwer, F., Schram, M. T., Iversen, M. M., Nouwen, A. & Holt, R. I. G., Mar 2020, In: Diabetic Medicine. 37, 3, p. 383-392

How psychosocial and behavioural research has shaped our understanding of diabetes

Nouwen, A., Speight, J., Pouwer, F. & Holt, R. I. G., Mar 2020, In: Diabetic Medicine. 37, 3, p. 377-379

Psychosocial research in the diabetic foot: Are we making progress?

Vileikyte, L., Pouwer, F. & Gonzalez, J. S., Mar 2020, In: Diabetes/Metabolism Research and Reviews. 36, Suppl 1, 5 p., e3257.

Sustainable improvement of HbA1c and satisfaction with diabetes care after adding telemedicine in patients on adaptable insulin regimens: Results of the TeleDiabetes randomized controlled trial

Buysse, H., Coremans, P., Pouwer, F. & Ruige, J., Mar 2020, In: Health Informatics Journal. 26, 1, p. 628-641

Impact of Hypoglycaemia on Patient Reported Outcomes

Pouwer, F., 1. Feb 2020, In: Diabetes Technology & Therapeutics. 22, Suppl. 1, p. A7-A8

The role of parental support for emerging adults with type 1 diabetes: A qualitative interview study

Bruun Johansen, C., Pouwer, F., Beck-Nielsen, H. & Rothmann, M. J., 2020, (Submitted) In: Perspectives in psychiatric care.

Longitudinal associations between depression and diabetes complications: a systematic review and meta-analysis

Nouwen, A., Adriaanse, M. C., van Dam, K., Iversen, M. M., Viechtbauer, W., Peyrot, M., Caramlau, I., Kokoszka, A., Kanc, K., de Groot, M., Nefs, G., Pouwer, F. & European Depression in Diabetes (EDID) Research Consortium, Dec 2019, In: *Diabetic Medicine*. 36, 12, p. 1562-1572

Study protocol of Diabetes LEAP: a longitudinal study examining emotional problems in adolescents with type 1 diabetes and their parents/caregivers

Nefs, G., Nguyen, L., Winterdijk, P., Hartman, E., Sas, T., Nuboer, R., De Kruijff, I., Bakker-van Waarde, W., Aanstoot, H.-J. & Pouwer, F., 24. Oct 2019, In: *BMC Pediatrics*. 19, 8 p., 377.

Anxiety is common and costly in T2DM - why psychology matters

Pouwer, F. & Nefs, G., Oct 2019, In: *Nature Reviews. Endocrinology*. 15, 10, p. 567-568

Comorbid elevated symptoms of anxiety and depression in adults with type 1 or type 2 diabetes: Results from the International Diabetes MILES Study

Nefs, G., Hendrieckx, C., Reddy, P., Browne, J. L., Bot, M., Dixon, J., Kyrios, M., Speight, J. & Pouwer, F., Aug 2019, In: *Journal of Diabetes and its Complications*. 33, 8, p. 523-529

Psychosocial health care needs of people with type 2 diabetes in primary care: views of patients and health care providers

Stoop, C., Pouwer, F., Pop, V., Den Oudsten, B. & Nefs, G., Aug 2019, In: *Journal of Advanced Nursing*. 75, 8, p. 1702-1712

Is Self-Compassion Related to Behavioural, Clinical and Emotional Outcomes in Adults with Diabetes? Results from the Second Diabetes MILES—Australia (MILES-2) Study

Ventura, A. D., Nefs, G., Browne, J. L., Friis, A. M., Pouwer, F. & Speight, J., 15. Jul 2019, In: *Mindfulness*. 10, 7, p. 1222-1231

Comment on the consensus report on the management of hyperglycaemia in Type 2 diabetes by the American Diabetes Association and the European Association for the Study of Diabetes

Skinner, T., Byrne, M., Dickinson, J. K., Fisher, L., Funnell, M., Guzman, S., Hendrieckx, C., Hermanns, N., Kanc, K., Lloyd, C., Mocan, A., Nouwen, A., Pouwer, F., Saleh-Stattin, N., Snoek, F., Speight, J., Sturt, J., Vallis, M., Wagner, J., Willaing, I., & 2 othersYoung-Hyman, D. & Zoffmann, V., Jul 2019, In: *Diabetic Medicine*. 36, 7, p. 911-912

What Do Adults with Type 2 Diabetes Want from the "perfect" App? Results from the Second Diabetes MILES: Australia (MILES-2) Study

Baptista, S., Trawley, S., Pouwer, F., Oldenburg, B., Wadley, G. & Speight, J., Jul 2019, In: *Diabetes Technology & Therapeutics*. 21, 7, p. 393-399 7 p.

Diabetes mellitus, type 1

Speight, J. & Pouwer, F., 5. Jun 2019, *Cambridge Handbook of Psychology, Health and Medicine*. Llewellyn, C. D., Ayers, S., McManus, C., Newman, S., Petrie, K. J., Revenson, T. A. & Weinman, J. (eds.). 3. ed. Cambridge University Press, p. 477-480 (Cambridge Handbooks in Psychology).

Diabetes mellitus, type 2

Pouwer, F. & Speight, J., 5. Jun 2019, *Cambridge Handbook of Psychology, Health and Medicine*. Llewellyn, C. D., Ayers, S., McManus, C., Newman, S., Petrie, K. J., Revenson, T. A. & Weinman, J. (eds.). Third Edition ed. Cambridge University Press, p. 481-482

Psychiatric disorders as risk factors for the development of type 2 diabetes mellitus: an umbrella review protocol

Lindekilde, N., Nefs, G., Henriksen, J. E., Lasgaard, M., Schram, M., Rubin, K., Rutters, F., Kivimaki, M. & Pouwer, F., 30. May 2019, In: *BMJ Open*. 9, 5, 5 p., e024981.

Prospective memory slips are associated with forgetting to take glucose-lowering therapies among adults with diabetes: results from the second Diabetes MILES – Australia (MILES-2) survey

Trawley, S., Baptista, S., Pouwer, F. & Speight, J., 1. May 2019, In: *Diabetic Medicine*. 36, 5, p. 569-577

Modeling Interactions Between Latent Variables in Research on Type D Personality: A Monte Carlo Simulation and Clinical Study of Depression and Anxiety

Lodder, P., Denollet, J., Emons, W. H. M., Nefs, G., Pouwer, F., Speight, J. & Wicherts, J. M., 13. Apr 2019, In: *Multivariate Behavioral Research*. 54, 5, p. 637-665

Assessing the perceived impact of diabetes on quality of life: psychometric validation of the DAWN2 Impact of Diabetes Profile in the second Diabetes MILES - Australia (MILES-2) survey

Holmes-Truscott, E., Skovlund, S. E., Hendrieckx, C., Pouwer, F., Peyrot, M. & Speight, J., 1. Apr 2019, In: *Diabetes Research and Clinical Practice*. 150, p. 253-263

Type D personality and social relations in adults with diabetes: results from diabetes MILES–The Netherlands

Spek, V., Nefs, G., Mommersteeg, P. M. C., Speight, J., Pouwer, F. & Denollet, J., 2. Dec 2018, In: *Psychology & Health*. 33, 12, p. 1456-1471

DO PSYCHIATRIC DISORDERS INCREASE THE RISK OF DEVELOPING TYPE 2 DIABETES MELLITUS? -A PROTOCOL OF A MATCHED REGISTER-BASED COHORT STUDY

Lindekilde, N., Henriksen, J. E., Lasgaard, M., Rubin, K. H. & Pouwer, F., Nov 2018.

More work is needed to better understand diabetes distress as a predictor of all-cause mortality in type 2 diabetes

Lindekilde, N. & Pouwer, F., Oct 2018, In: *Diabetologia*. 61, 10, p. 2247–2248

The associations between diabetes distress and self-efficacy, medication adherence, self-care activities and disease control depend on the way diabetes distress is measured: comparing the DDS-17, DDS-2 and the PAID-5

Chew, B-H., Vos, R. C., Pouwer, F. & Rutten, G. E. H. M., Aug 2018, In: *Diabetes Research and Clinical Practice*. 142, p. 74-84

Diabetes distress is more strongly associated with HbA1c than depressive symptoms in adolescents with type 1 diabetes: Results from Diabetes MILES Youth-Australia

Hagger, V., Hendrieckx, C., Cameron, F., Pouwer, F., Skinner, T. C. & Speight, J., Jun 2018, In: *Pediatric Diabetes*. 19, 4, p. 840-847

Diabetes stigma is associated with negative treatment appraisals among adults with insulin-treated Type 2 diabetes: Results from the second Diabetes MILES - Australia (MILES-2) survey

Holmes-Truscott, E., Browne, J. L., Ventura, A. D., Pouwer, F. & Speight, J., May 2018, In: *Diabetic Medicine*. 35, 5, p. 658-662

Mindfulness and fear of hypoglycaemia in parents of children with Type 1 diabetes: Results from Diabetes MILES Youth - The Netherlands

Aalders, J., Hartman, E., Nefs, G., Nieuwesteeg, A., Hendrieckx, C., Aanstoot, H. J., Winterdijk, P., van Mil, E., Speight, J. & Pouwer, F., May 2018, In: *Diabetic Medicine*. 35, 5, p. 650-657

What is the best measure for assessing diabetes distress? A comparison of the Problem Areas in Diabetes and Diabetes Distress Scale: results from Diabetes MILES–Australia

Fenwick, E. K., Rees, G., Holmes-Truscott, E., Browne, J. L., Pouwer, F. & Speight, J., Apr 2018, In: *Journal of Health Psychology*. 23, 5, p. 667-680

The relationship between social support, diabetes distress and blood glucose levels in people with diabetes: Diabetes MILES Australia

Chan, C., Smith, K. J., Cockshaw, W., Truscott-Holmes, E., Ventura, A., Browne, J., Pouwer, F. & Speight, J., 1. Mar 2018, In: *Diabetic Medicine*. 35, Suppl. 1, p. 16 1 p.

Comment on Young-Hyman et al. Psychosocial Care for People With Diabetes: A Position Statement of the American Diabetes Association. *Diabetes Care* 2016;39:2126–2140

Snoek, F. J., Hermanns, N., de Wit, M., Huber, J., Sturt, J., Pouwer, F., Lloyd, C. E., Willaing, I., Nouwen, A. & Psychosocial Aspects of Diabetes Study Group of the European Association for the Study of Diabetes, Mar 2018, In: *Diabetes Care*. 41, 3, p. e31-e32

Non-linear relationships between fear of hypoglycemia and actual risk for severe hypoglycemia in parents of adolescents with type 1 diabetes: Clinical implications

Gonder-Frederick, L., Hendrickx, C., Pouwer, F. & Speight, J., 1. Feb 2018, In: *Diabetes Technology & Therapeutics*. 20, Suppl. 1, p. A16-A17 ATTD8-0373.

The role of hypoglycemia in the burden of living with diabetes among adults with diabetes and family members: results from the DAWN2 study in The Netherlands

Nefs, G. & Pouwer, F., 18. Jan 2018, In: *BMC Public Health*. 18, 1, 8 p., 156.

Emotional Well-Being Factors Associated with Sexual Dysfunction in Adults with Type 1 or Type 2 Diabetes: Results from Diabetes MILES—Australia

Ventura, A. D., Browne, J. L., Pouwer, F., Speight, J. & Byrne, M., 2018, In: *International Journal of Sexual Health*. 30, 3, p. 237-249

Identification of barriers to insulin therapy and approaches to overcoming them

Russell-Jones, D., Pouwer, F. & Khunti, K., 2018, In: *Diabetes, Obesity and Metabolism*. 20, 3, p. 488–496

Cut points for identifying clinically significant diabetes distress in adolescents with type 1 diabetes using the PAID-T: Results from diabetes MILES youth-Australia

Hagger, V., Hendrickx, C., Cameron, F., Pouwer, F., Skinner, T. C. & Speight, J., 1. Nov 2017, In: *Diabetes Care*. 40, 11, p. 1462-1468

Validation of the WHO-5 as a first-step screening instrument for depression in adults with diabetes: Results from Diabetes MILES - Australia

Halliday, J. A., Hendrickx, C., Busija, L., Browne, J. L., Nefs, G., Pouwer, F. & Speight, J., Oct 2017, In: *Diabetes Research and Clinical Practice*. 132, p. 27-35

Comment on Young-Hyman et al. Psychosocial Care for People With Diabetes: A Position Statement of the American Diabetes Association. *Diabetes Care* 2016;39:2126-2140

Mezuk, B. & Pouwer, F., 1. Sept 2017, In: *Diabetes Care*. 40, 9, p. e127-e128

Assessing Psychological Insulin Resistance in Type 2 Diabetes: a Critical Comparison of Measures

Holmes-Truscott, E., Pouwer, F. & Speight, J., 1. Jul 2017, In: *Current Diabetes Reports*. 17, 7, 13 p., 46.

Diabetes in Sub-Saharan African children: Risks, care, and challenges

Hapunda, G. & Pouwer, F., 1. Jan 2017, *Handbook of Applied Developmental Science in Sub-Saharan Africa*. Abubakar, A. & van de Vijver, F. (eds.). Cham: Springer, p. 157-172

Advanced Glycation End Product (AGE) Accumulation in the Skin is Associated with Depression: The Maastricht Study
van Dooren, F. E. P., Pouwer, F., Schalkwijk, C. G., Sep, S. J. S., Stehouwer, C. D. A., Henry, R. M. A., Dagnelie, P. C., Schaper, N. C., van der Kallen, C. J. H., Koster, A., Denollet, J., Verhey, F. R. J. & Schram, M. T., Jan 2017, In: *Depression and Anxiety*. 34, 1, p. 59-67 9 p.

Depression: a common and burdensome complication of diabetes that warrants the continued attention of clinicians, researchers and healthcare policy makers

Pouwer, F., Jan 2017, In: *Diabetologia*. 60, 1, p. 30-34 5 p.

Association of Microvascular Dysfunction With Late-Life Depression: A Systematic Review and Meta-analysis

van Agtmaal, M. J. M., Houben, A. J. H. M., Pouwer, F., Stehouwer, C. D. A. & Schram, M. T., 2017, In: *JAMA Psychiatry*. 74, 7, p. 729-739

Associations Between Physical Activity and Depressive Symptoms by Weight Status Among Adults With Type 2 Diabetes: Results from Diabetes MILES - Australia

Craike, M. J., Mosely, K., Browne, J. L., Pouwer, F. & Speight, J., 2017, In: *Journal of Physical Activity & Health*. 14, 3, p. 195-202

Cohort profiles of the cross-sectional and prospective participant groups in the second Diabetes MILES-Australia (MILES-2) study

Browne, J. L., Holmes-Truscott, E., Ventura, A. D., Hendrieckx, C., Pouwer, F. & Speight, J., 2017, In: *BMJ Open*. 7, 2, 16 p., e012926.

Comment on Butwicka et al. Psychiatric Disorders and Health-Related Quality of Life in Children With Type 1 Diabetes Mellitus

Nguyen, L., Nefs, G. & Pouwer, F., 2017, In: *Psychosomatics*. 58, 2, p. 214-215

Depressive Symptoms Are Negatively Associated with Glucose Testing and Eating Meals on Time among Individuals with Diabetes in Zambia

Hapunda, G., Abubakar, A., Pouwer, F. & van de Vijver, F., 2017, In: *Diabetes & Metabolism Journal*. 41, 6, p. 440-448

Diabetes Complications and Depressive Symptoms: Prospective results from the Montreal Diabetes Health and Well-Being Study

Deschênes, S. S., Burns, R. J., Pouwer, F. & Schmitz, N., 2017, In: *Psychosomatic Medicine*. 79, 5, p. 603-612

Diabetes mellitus

Tabák, A. G., Mezuk, B. & Pouwer, F., 2017, *The Routledge International Handbook of Psychosocial Epidemiology*. 1. ed. Routledge, p. 215-246

Fatigue in type 1 diabetes: an understudied problem

Pouwer, F., 2017, In: *The Lancet Diabetes & Endocrinology*. 5, 6, p. 409-410

Gender differences in disordered eating behaviors and body dissatisfaction among adolescents with type 1 diabetes: Results from diabetes MILES youth-Australia

Araia, E., Hendrieckx, C., Skinner, T., Pouwer, F., Speight, J. & King, R. M., 2017, In: *International Journal of Eating Disorders*. 50, 10, p. 1183-1193

Low vitamin D levels are not a contributing factor to higher prevalence of depressive symptoms in people with Type 2 diabetes mellitus: the Hoorn study

Westra, S., Simsek, S., Rutters, F., Krul-Poel, Y. H. M., Stehouwer, C. D. A., Dekker, J. M. & Pouwer, F., 2017, In: *Diabetic Medicine*. 34, 4, p. 577-581

Paediatric parenting stress in fathers and mothers of young children with Type 1 diabetes: a longitudinal study

Nieuwesteeg, A., Hartman, E., Emons, W., van Bakel, H., Aanstoot, H-J., van Mil, E. & Pouwer, F., 2017, In: *Diabetic Medicine*. 34, 6, p. 821-827

Psychological Factors and Diabetes Mellitus

Pouwer, F. & Speight, J., 2017, *Textbook of Diabetes*. Holt, R., Cockram, C., Flyvbjerg, A. & Goldstein, B. (eds.). 5. ed. Wiley, p. 821-839

Screening for and subsequent participation in a trial for depression and anxiety in people with type 2 diabetes treated in primary care: Who do we reach?

Stoop, C. H., Nefs, G., Pop, V. J. & Pouwer, F., 2017, In: *Primary Care Diabetes*. 11, 3, p. 273-280

Severe hypoglycemia, impaired awareness of hypoglycemia, and self-monitoring in adults with type 1 diabetes: Results from Diabetes MILES-Australia

Hendrieckx, C., Hagger, V., Jenkins, A., Skinner, T. C., Pouwer, F. & Speight, J., 2017, In: *Journal of Diabetes and its Complications*. 31, 3, p. 577-582

Strengths, Risk Factors, and Resilient Outcomes in Adolescents With Type 1 Diabetes: Results From Diabetes MILES Youth-Australia

Hilliard, M. E., Hagger, V., Hendrieckx, C., Anderson, B. J., Trawley, S., Jack, M. M., Pouwer, F., Skinner, T. & Speight, J., 2017, In: *Diabetes Care*. 40, 7, p. 849-855

The Use of Mobile Applications Among Adults with Type 1 and Type 2 Diabetes: Results from the Second MILES-Australia (MILES-2) Study

Trawley, S., Baptista, S., Browne, J. L., Pouwer, F. & Speight, J., 2017, In: Diabetes Technology & Therapeutics. 19, 12, p. 730-738

Does Mindfulness-Based Cognitive Therapy benefit all people with diabetes and comorbid emotional complaints equally? Moderators in the DiaMind trial

Nyklíček, I., VAN Son, J., Pop, V. J. M., Denollet, J. & Pouwer, F., Dec 2016, In: Journal of Psychosomatic Research. 91, December, p. 40-47 8 p.

Review of research grant allocation to psychosocial studies in diabetes research

Jones, A., Vallis, M., Cooke, D. & Pouwer, F., Dec 2016, In: Diabetic Medicine. 33, 12, p. 1673-1676 4 p.

The Use of Mobile Applications Among Adolescents with Type 1 Diabetes: Results from Diabetes MILES Youth-Australia

Trawley, S., Browne, J. L., Hagger, V. L., Hendrieckx, C., Holmes-Truscott, E., Pouwer, F., Skinner, T. C. & Speight, J., Dec 2016, In: Diabetes Technology & Therapeutics. 18, 12, p. 813-819 7 p.

Effect of vitamin D supplementation on health status in non-vitamin D deficient people with type 2 diabetes mellitus

Westra, S., Krul-Poel, Y. H. M., van Wijland, H. J., Ter Wee, M. M., Stam, F., Lips, P., Pouwer, F. & Simsek, S., Nov 2016, In: Endocrine Connections. 5, 6, p. 61-69 9 p.

Suicidal ideation reported by adults with Type 1 or Type 2 diabetes: results from Diabetes MILES-Australia

Handley, T. E., Ventura, A. D., Browne, J. L., Rich, J. N., Attia, J. R., Reddy, S. P., Pouwer, F. & Speight, J., Nov 2016, In: Diabetic Medicine. 33, 11, p. 1582-1589 8 p.

The Association of Mindful Parenting with Glycemic Control and Quality of Life in Adolescents with Type 1 Diabetes: Results from Diabetes MILES-The Netherlands

Serkel-Schrama, I. J. P., de Vries, J., Nieuwesteeg, A. M., Pouwer, F., Nyklíček, I., Speight, J., de Bruin, E. I., Bögels, S. M. & Hartman, E. E., 20. Sept 2016, In: Mindfulness. 7, 5, p. 1227-1237 11 p.

Diabetes MILES Youth-Australia: methods and sample characteristics of a national survey of the psychological aspects of living with type 1 diabetes in Australian youth and their parents

Hagger, V., Trawley, S., Hendrieckx, C., Browne, J. L., Cameron, F., Pouwer, F., Skinner, T. & Speight, J., 12. Aug 2016, In: BMC Psychology. 4, 1, p. 42

Anxiety and Depressive Symptoms as Predictors of All-Cause Mortality among People with Insulin-Naïve Type 2 Diabetes: 17-Year Follow-Up of the Second Nord-Trøndelag Health Survey (HUNT2), Norway

Iversen, M. M., Nefs, G., Tell, G. S., Espehaug, B., Midthjell, K., Graue, M. & Pouwer, F., Aug 2016, In: PLOS ONE. 11, 8, p. e0160861 e0160861.

Associations of low grade inflammation and endothelial dysfunction with depression - The Maastricht Study

van Dooren, F. E. P., Schram, M. T., Schalkwijk, C. G., Stehouwer, C. D. A., Henry, R. M. A., Dagnelie, P. C., Schaper, N. C., van der Kallen, C. J. H., Koster, A., Sep, S. J. S., Denollet, J., Verhey, F. R. J. & Pouwer, F., Aug 2016, In: Brain, Behavior, and Immunity. 56, August, p. 390-396 7 p.

Depressive symptoms and all-cause mortality in people with type 2 diabetes: a focus on potential mechanisms

Nefs, G., Pop, V. J. M., Denollet, J. & Pouwer, F., Aug 2016, In: Psychosomatic Medicine. 209, 2, p. 142-149 8 p.

Subjective Wellbeing Among Adults with Diabetes: Results from Diabetes MILES—Australia

Holmes-Truscott, E., Browne, J. L., Pouwer, F., Speight, J. & Cummins, R. A., 1. Jun 2016, In: Journal of Happiness Studies. 17, 3, p. 1205-1217 13 p.

Mindfulness facets as differential mediators of short and long-term effects of Mindfulness-Based Cognitive Therapy in diabetes outpatients: Findings from the DiaMind randomized trial

Haenen, S., Nyklíček, I., VAN Son, J., Pop, V. J. M. & Pouwer, F., Jun 2016, In: Journal of Psychosomatic Research. 85, p. 44-50 7 p.

Prospectively measured lifestyle factors and BMI explain differences in health-related quality of life between colorectal cancer patients with and without comorbid diabetes

Vissers, P. A. J., Thong, M. S. Y., Pouwer, F., Creemers, G.-J., Slooter, G. D. & van de Poll-Franse, L. V., Jun 2016, In: Supportive Care in Cancer. 24, 6, p. 2591- 2601 11 p.

Does self-efficacy mediate the cross-sectional relationship between perceived quality of health care and self-management of diabetes? Results from Diabetes MILES - Australia

Tregea, H., Lee, C., Browne, J. L., Pouwer, F. & Speight, J., 3. May 2016, In: Psychology & Health. 31, 5, p. 592-604 13 p.

The impact of having both cancer and diabetes on patient-reported outcomes: a systematic review and directions for future research

Vissers, P. A. J., Falzon, L., van de Poll-Franse, L. V., Pouwer, F. & Thong, M. S. Y., Apr 2016, In: Journal of Cancer Survivorship. 10, 2, p. 406-415 10 p.

The relationship between parenting stress and parent-child interaction with health outcomes in the youngest patients with type 1 diabetes (0-7 years)

Nieuwesteeg, A. M., Hartman, E. E., Aanstoot, H.-J., van Bakel, H. J. A., Emons, W. H. M., van Mil, E. & Pouwer, F., Mar 2016, In: European Journal of Pediatrics. 175, 3, p. 329-338 10 p.

Vitamin D status and health-related quality of life in patients with Type 2 diabetes

Krul-Poel, Y. H. M., Westra, S., van Wijland, H. J., Stam, F., Lips, P., Pouwer, F. & Simsek, S., Mar 2016, In: Diabetic Medicine. 33, 3, p. 300-306

Explaining psychological insulin resistance in adults with non-insulin-treated type 2 diabetes: The roles of diabetes distress and current medication concerns. Results from Diabetes MILES–Australia

Holmes-Truscott, E., Skinner, T. C., Pouwer, F. & Speight, J., Feb 2016, In: Primary Care Diabetes. 10, 1, p. 75-82 8 p.

Psychological and personality factors in type 2 diabetes mellitus, presenting the rationale and exploratory results from The Maastricht Study, a population-based cohort study

van Dooren, F. E. P., Denollet, J., Verhey, F. R. J., Stehouwer, C. D. A., Sep, S. J. S., Henry, R. M. A., Kremers, S. P. J., Dagnelie, P. C., Schaper, N. C., van der Kallen, C. J. H., Koster, A., Pouwer, F. & Schram, M. T., 27. Jan 2016, In: BMC Psychiatry. 16, p. 17 17.

Association of Type D personality with increased vulnerability to depression: Is there a role for inflammation or endothelial dysfunction? - The Maastricht Study

van Dooren, F. E. P., Verhey, F. R. J., Pouwer, F., Schalkwijk, C. G., Sep, S. J. S., Stehouwer, C. D. A., Henry, R. M. A., Dagnelie, P. C., Schaper, N. C., van der Kallen, C. J. H., Koster, A., Schram, M. T. & Denollet, J., 1. Jan 2016, In: Journal of Affective Disorders. 189, January, p. 118-125 8 p.

Correlates and outcomes of worries about hypoglycemia in family members of adults with diabetes: The second Diabetes Attitudes, Wishes and Needs (DAWN2) study

Nefs, G., Pouwer, F., Holt, R. I. G., Skovlund, S., Hermanns, N., Nicolucci, A. & Peyrot, M., 2016, In: Psychosomatic Medicine. 89, October, p. 69-77 9 p.

Diabetes, Depression, and Cardiovascular risk

Adriaanse, M. C. & Pouwer, F., 2016, *Handbook of Psychocardiology*. Alvarenga, M. & Byrne, D. (eds.). Springer, p. 831-847

Intraperitoneal versus subcutaneous insulin therapy in the treatment of type 1 diabetes mellitus

van Dijk, P. R., Logtenberg, S. J. J., Hendriks, S. H., Groenier, K. H., Feenstra, J., Pouwer, F., Gans, R. O. B., Kleefstra, N. & Bilo, H. J. G., Nov 2015, In: The Netherlands journal of medicine. 73, 9, p. 399-409

Effectiveness of a stepped care intervention for anxiety and depression in people with diabetes, asthma or COPD in primary care: A randomized controlled trial
Stoop, C. H., Nefs, G., Pommer, A. M., Pop, V. J. M. & Pouwer, F., 15. Sept 2015, In: Journal of Affective Disorders. 184, p. 269-276

Subjective sleep impairment in adults with type 1 or type 2 diabetes: Results from Diabetes MILES--The Netherlands
Nefs, G., Donga, E., van Someren, E., Bot, M., Speight, J. & Pouwer, F., Sept 2015, In: Diabetes Research and Clinical Practice. 109, 3, p. 466-475 10 p.

The impact of diabetes on neuropathic symptoms and receipt of chemotherapy among colorectal cancer patients: results from the PROFILES registry
Vissers, P. A. J., Mols, F., Thong, M. S. Y., Pouwer, F., Vreugdenhil, G. & van de Poll-Franse, L. V., Sept 2015, In: Journal of Cancer Survivorship. 9, 3, p. 523-531

Impact of cancer on use of glucose-lowering drug treatment in individuals with diabetes: potential mechanisms
Pouwer, F., Jun 2015, In: Diabetologia. 58, 6, p. 1378-1379

Psychological and pharmacological interventions for depression in patients with diabetes mellitus: an abridged Cochrane review: some critical comments
van der Donk, L. J. & Pouwer, F., Jun 2015, In: Diabetic Medicine. 32, 6, p. 839

Living with type 1 diabetes is challenging for Zambian adolescents: Qualitative data on stress, coping with stress and quality of care and life
Hapunda, G., Abubakar, A., van de Vijver, F. & Pouwer, F., 18. Apr 2015, In: BMC Endocrine Disorders. 15, 1, 12 p., 20.

Suicidal ideation or non-suicidal self-harm? A mismatch between the DSM-IV criterion and PHQ-9 item nine
Browne, J. L., Nefs, G., Pouwer, F. & Speight, J., Apr 2015, In: Diabetes Research and Clinical Practice. 108, 1, p. e5-e6

The association between glucose-lowering drug use and mortality among breast cancer patients with type 2 diabetes
Vissers, P. A. J., Cardwell, C. R., van de Poll-Franse, L. V., Young, I. S., Pouwer, F. & Murray, L. J., Apr 2015, In: Breast Cancer Research and Treatment. 150, 2, p. 427-437

The association between mindfulness and emotional distress in adults with diabetes: could mindfulness serve as a buffer? Results from Diabetes MILES: The Netherlands
VAN Son, J., Nyklíček, I., Nefs, G., Speight, J., Pop, V. J. M. & Pouwer, F., Apr 2015, In: Journal of Behavioral Medicine. 38, 2, p. 251-260 10 p.

The association between types of eating behaviour and dispositional mindfulness in adults with diabetes. Results from Diabetes MILES. The Netherlands
Tak, S. R., Hendrieckx, C., Nefs, G., Nyklíček, I., Speight, J. & Pouwer, F., Apr 2015, In: Appetite. 87, p. 288-295

If it does not significantly change HbA1c levels why should we waste time on it? A plea for the prioritization of psychological well-being in people with diabetes

Jones, A., Vallis, M. & Pouwer, F., 1. Feb 2015, In: Diabetic Medicine. 32, 2, p. 155-163 9 p.

Depression, anxiety and self-care behaviours of young adults with Type 2 diabetes: results from the International Diabetes Management and Impact for Long-term Empowerment and Success (MILES) Study
Browne, J. L., Nefs, G., Pouwer, F. & Speight, J., Jan 2015, In: Diabetic Medicine. 32, 1, p. 133-140 8 p.

Anxiety, depression and timing of insulin treatment among people with type 2 diabetes: Nine-year follow-up of the Nord-Trøndelag Health Study, Norway
Iversen, M. M., Nefs, G., Tell, G. S., Espehaug, B., Midthjell, K., Graue, M. & Pouwer, F., 2015, In: Journal of Psychosomatic Research. 79, 4, p. 309-315 9052.

Depressive Symptom Clusters Differentially Predict Cardiovascular Hospitalization in People With Type 2 Diabetes
Nefs, G., Pop, V. J. M., Denollet, J. & Pouwer, F., 2015, In: Psychosomatics. 56, 6, p. 662-673

Diabetes mellitus and comorbid depression in Zambia
Hapunda, G., Abubakar, A., Pouwer, F. & van de Vijver, F., 2015, In: Diabetic Medicine. 32, 6, p. 814-818

Erythrocyte fatty acid profiles and plasma homocysteine, folate and vitamin B₆ and B₁₂ in recurrent depression: Implications for co-morbidity with cardiovascular disease
Assies, J., Mocking, R. J. T., Lok, A., Koeter, M. W. J., Bockting, C. L. H., Visser, I., Pouwer, F., Ruhé, H. G. & Schene, A. H., 2015, In: Psychiatry Research. 229, 3, p. 992-998 9084.

Fear of hypoglycaemia in adults with Type 1 diabetes: results from Diabetes MILES - The Netherlands
Nefs, G., Bevelander, S., Hendrieckx, C., Bot, M., Ruige, J., Speight, J. & Pouwer, F., 2015, In: Diabetic Medicine. 32, 10, p. 1289-1296

Negative appraisals of insulin therapy are common among adults with Type 2 diabetes using insulin: Results from Diabetes MILES - Australia cross-sectional survey
Holmes-Truscott, E., Skinner, T. C., Pouwer, F. & Speight, J., 2015, In: Diabetic Medicine. 32, 10, p. 1297-1303

Stressful life events and incident metabolic syndrome: the Hoorn study
Rutters, F., Pilz, S., Koopman, A. D. M., Rauh, S. P., Pouwer, F., Stehouwer, C. D. A., Elders, P. J., Nijpels, G. & Dekker, J. M., 2015, In: Stress: The International Journal on the Biology of Stress . 18, 5, p. 507-513 7 p.

Type D personality, suboptimal health behaviors and emotional distress in adults with diabetes: Results from Diabetes MILES-The Netherlands
Nefs, G., Speight, J., Pouwer, F., Pop, V. J. M., Bot, M. & Denollet, J., 2015, In: Diabetes Research and Clinical Practice. 108, 1, p. 94-105

Beta-blockers and depression in elderly hypertension patients in primary care

Ringoir, L., Pedersen, S. S., Widdershoven, J. W. M. G., Pouwer, F., Keyzer, J. M. L., Romeijnders, A. C. & Pop, V. J. M., Jun 2014, In: Family Medicine. 46, 6, p. 447-453

Comment on Schmitz et al. Recurrent subthreshold depression in type 2 diabetes: An important risk factor for poor health outcomes. diabetes care 2014;37:970-978

Aalders, J. & Pouwer, F., Jun 2014, In: Diabetes Care. 37, 6, p. e145

Associations between economic hardship and markers of self-management in adults with type 2 diabetes: results from Diabetes MILES - Australia

O'Neil, A., Williams, E. D., Browne, J. L., Horne, R., Pouwer, F. & Speight, J., 2014, In: Australian and New Zealand Journal of Public Health. 38, 5, p. 466-472 7 p.

Diabetes-specific emotional distress in people with Type 2 diabetes: a comparison between primary and secondary care
Stoop, C. H., Nefs, G., Pop, V. J. M., Wijnands-van Gent, C. J. M., Tack, C. J., Geelhoed-Duijvestijn, P. H. L. M., Diamant, M., Snoek, F. J. & Pouwer, F., 2014, In: Diabetic Medicine. 31, 10, p. 1252-1259

Effects of oxidative stress on fatty acid- and one-carbon-metabolism in psychiatric and cardiovascular disease comorbidity
Assies, J., Mocking, R. J. T., Lok, C. A., Ruhé, H. G., Pouwer, F. & Schene, A. H., 2014, In: Acta Psychiatrica Scandinavica. Supplementum. 130, 3, p. 163-180

Endothelial dysfunction is associated with a greater depressive symptom score in a general elderly population: the Hoorn Study

van Sloten, T. T., Schram, M. T., Adriaanse, M. C., Dekker, J. M., Nijpels, G., Teerlink, T., Scheffer, P. G., Pouwer, F., Schalkwijk, C. G., Stehouwer, C. D. A. & Henry, R. M. A., 2014, In: Psychological Medicine. 44, 7, p. 1403-1416

Further investigation of the psychometric properties of the Insulin Treatment Appraisal Scale among insulin-using and non-insulin-using adults with type 2 diabetes: results from Diabetes MILES-Australia
Holmes-Truscott, E., Pouwer, F. & Speight, J., 2014, In: Health and Quality of Life Outcomes. 12, 1, 9 p., 87.

Managing hypoglycaemia in diabetes may be more fear management than glucose management: A practical guide for diabetes care providers.

Vallis, M., Jones, A. & Pouwer, F., 2014, In: Current Diabetes Reviews. 10, 6

Managing hypoglycemia in diabetes may be more fear management than glucose management: a practical guide for diabetes care providers

Vallis, M., Jones, A. & Pouwer, F., 2014, In: Current Diabetes Reviews. 10, 6, p. 364-370 7 p.

Mindfulness-based cognitive therapy for people with diabetes and emotional problems: long-term follow-up findings from the DiaMind randomized controlled trial

VAN Son, J., Nyklíček, I., Pop, V. J. M., Blonk, M. C., Erdtsieck, R. J. & Pouwer, F., 2014, In: Journal of Psychosomatic Research. 77, 1, p. 81-84

Patient-reported outcomes in primary care patients with COPD: psychometric properties and usefulness of the Clinical COPD Questionnaire (CCQ). A cross-sectional study

Pommer, A. M., Pouwer, F., Denollet, J., Meijer, J-W. & Pop, V. J. M., 2014, In: Npj Primary Care Respiratory Medicine. 24, 6 p., 14027.

Psychometric properties of the Exercise Self-efficacy Scale in Dutch Primary care patients with type 2 diabetes mellitus
van der Heijden, M. M. P., Pouwer, F. & Pop, V. J. M., 2014, In: International Journal of Behavioral Medicine. 21, 2, p. 394-401

Qualitative observation instrument to measure the quality of parent-child interactions in young children with type 1 diabetes mellitus

Nieuwesteeg, A. M., Hartman, E. E., Pouwer, F., Emons, W., Aanstoot, H-J., van Mil, E. & van Bakel, H. J. A., 2014, In: BMC Pediatrics. 14, 1, 11 p., 145.

Response to Kawada. Depressive symptoms and HbA1c in patients with Type 1 and Type 2 diabetes

Bot, M., Pouwer, F., De Jonge, P. & Snoek, F. J., 2014, In: Diabetic Medicine. 31, 6, p. 760-761

Self-reported access to and quality of healthcare for diabetes: do the severely obese experience equal access?

Dixon, J. B., Browne, J. L., Rice, T., Jones, K., Pouwer, F. & Speight, J., 2014, In: Australian Family Physician. 43, 8, p. 552-556

Severe obesity and diabetes self-care attitudes, behaviours and burden: implications for weight management from a matched case-controlled study. Results from Diabetes MILES--Australia

Dixon, J. B., Browne, J. L., Mosely, K. G., Rice, T. L., Jones, K. M., Pouwer, F. & Speight, J., 2014, In: Diabetic Medicine. 31, 2, p. 232-240

The individual and combined effect of colorectal cancer and diabetes on health-related quality of life and sexual functioning: results from the PROFILES registry

Vissers, P. A. J., Thong, M. S. Y., Pouwer, F., den Oudsten, B. L., Nieuwenhuijzen, G. A. P. & van de Poll-Franse, L. V., 2014, In: Supportive Care in Cancer. 22, 11, p. 3071-3079

Toward defining a cutoff score for elevated fear of hypoglycemia on the hypoglycemia fear survey worry subscale in patients with type 2 diabetes

Hajós, T. R. S., Polonsky, W. H., Pouwer, F., Gonder-Frederick, L. & Snoek, F. J., 2014, In: Diabetes Care. 37, 1, p. 102-108

Compromised quality of life in patients with both Type 1 diabetes mellitus and coeliac disease

Bakker, S. F., Pouwer, F., Tushuizen, M. E., Hoogma, R. P., Mulder, C. J. & Simsek, S., Jul 2013, In: Diabetic Medicine. 30, 7, p. 835-839

Diabetes Attitudes, Wishes and Needs second study (DAWN2™): cross-national benchmarking of diabetes-related psychosocial outcomes for people with diabetes

Nicolucci, A., Kovacs Burns, K., Holt, R. I. G., Comaschi, M., Hermanns, N., Ishii, H., Kokoszka, A., Pouwer, F., Skovlund, S. E., Stuckey, H., Tarkun, I., Vallis, M., Wens, J., Peyrot, M. & DAWN2 Study Group, Jul 2013, In: *Diabetic Medicine*. 30, 7, p. 767-777

The association between diabetes and an episode of depressive symptoms in the 2002 World Health Survey: an analysis of 231,797 individuals from 47 countries

Mommersteeg, P. M. C., Herr, R., Pouwer, F., Holt, R. I. G. & Loerbroeks, A., Jun 2013, In: *Diabetic Medicine*. 30, 6, p. e208-e214

Adverse effects of depression on glycemic control and health outcomes in people with diabetes: a review

Pouwer, F., Nefs, G. & Nouwen, A., 2013, In: *Endocrinology and Metabolism Clinics of North America*. 42, 3, p. 529-544

Depression and risk of mortality in people with diabetes mellitus: a systematic review and meta-analysis

van Dooren, F. E. P., Nefs, G., Schram, M. T., Verhey, F. R. J., Denollet, J. & Pouwer, F., 2013, In: *PLOS ONE*. 8, 3, 11 p.

Depressive symptoms, insulin sensitivity and insulin secretion in the RISC cohort study

Bot, M., Pouwer, F., De Jonge, P., Nolan, J. J., Mari, A., Højlund, K., Golay, A., Balkau, B. & Dekker, J. M., 2013, In: *Diabetes & Metabolism*. 39, 1, p. 42-49

Development and validity of the Patient-centred COPD Questionnaire (PCQ)

Pommer, A. M., Prins, L., van Ranst, D., Meijer, J.-W., Van't Hul, A., Janssen, J., Pouwer, F. & Pop, V. J. M., 2013, In: *Journal of Psychosomatic Research*. 75, 6, p. 563-571

Development of a smoking abstinence self-efficacy questionnaire

Spek, V., Lemmens, F., Chatrou, M., van Kempen, S., Pouwer, F. & Pop, V. J. M., 2013, In: *International Journal of Behavioral Medicine*. 20, 3, p. 444-449

Diabetes Attitudes Wishes and Needs 2 (DAWN2): a multinational, multi-stakeholder study of psychosocial issues in diabetes and person-centred diabetes care

Peyrot, M., Burns, K. K., Davies, M. J., Forbes, A., Hermanns, N., Holt, R. I. G., Kalra, S., Nicolucci, A., Pouwer, F., Wens, J., Willaing, I. & Skovlund, S. E., 2013, In: *Diabetes Research and Clinical Practice*. 99, 2, p. 174-184

Diabetes Attitudes, Wishes and Needs second study (DAWN2™): cross-national benchmarking indicators for family members living with people with diabetes

Kovacs Burns, K., Nicolucci, A., Holt, R. I. G., Willaing, I., Hermanns, N., Kalra, S., Wens, J., Pouwer, F., Skovlund, S. E., Peyrot, M. & DAWN2 Study Group, 2013, In: *Diabetic Medicine*. 30, 7, p. 778-788

Differential associations between depressive symptoms and glycaemic control in outpatients with diabetes

Bot, M., Pouwer, F., De Jonge, P., Tack, C. J., Geelhoed-Duijvestijn, P. H. L. M. & Snoek, F. J., 2013, In: *Diabetic Medicine*. 30, 3, p. 115-122

Does the shortage of diabetes specialists in regional and rural Australia matter? Results from Diabetes MILES--Australia
Skinner, T., Allen, P., Peach, E., Browne, J. L., Pouwer, F., Speight, J. & Dunbar, J. A., 2013, In: *Diabetes Research and Clinical Practice*. 100, 2, p. 222-229

Effects of exercise training on quality of life, symptoms of depression, symptoms of anxiety and emotional well-being in type 2 diabetes mellitus: a systematic review

van der Heijden, M. M. P., van Dooren, F. E. P., Pop, V. J. M. & Pouwer, F., 2013, In: *Diabetologia*. 56, 6, p. 1210-1225

Ethnic aspects of emotional distress in patients with diabetes-the Amsterdam Health Monitor Study

Pouwer, F., Wijnhoven, H. A. H., Ujcic-Voortman, J. K., de Wit, M., Schram, M. T., Baan, C. A. & Snoek, F. J., 2013, In: *Diabetic Medicine*. 30, 1, p. e25-e31

Psychometric and screening properties of the WHO-5 well-being index in adult outpatients with Type 1 or Type 2 diabetes mellitus

Hajós, T. R. S., Pouwer, F., Skovlund, S. E., den Oudsten, B. L., Geelhoed-Duijvestijn, P. H. L. M., Tack, C. J. & Snoek, F. J., 2013, In: *Diabetic Medicine*. 30, 2, p. e63-e69

Severely obese people with diabetes experience impaired emotional well-being associated with socioeconomic disadvantage: results from diabetes MILES - Australia

Dixon, J. B., Browne, J. L., Lambert, G. W., Jones, K. M., Reddy, P., Pouwer, F. & Speight, J., 2013, In: *Diabetes Research and Clinical Practice*. 101, 2, p. 131-140

The effects of a mindfulness-based intervention on emotional distress, quality of life, and HbA(1c) in outpatients with diabetes (DiaMind): a randomized controlled trial

VAN Son, J., Nyklicek, I., Pop, V. J. M., Blonk, M. C., Erdtsieck, R. J., Spooren, P. F., Toorians, A. W. & Pouwer, F., 2013, In: *Diabetes Care*. 36, 4, p. 823-830

The impact of comorbidity on Health-Related Quality of Life among cancer survivors: analyses of data from the PROFILES registry

Vissers, P. A. J., Thong, M. S. Y., Pouwer, F., Zanders, M. M. J., Coebergh, J. W. W. & van de Poll-Franse, L. V., 2013, In: *Journal of Cancer Survivorship*. 7, 4, p. 602-613

The longitudinal association between depressive symptoms and initiation of insulin therapy in people with type 2 diabetes in primary care

Nefs, G., Pop, V. J. M., Denollet, J. & Pouwer, F., 2013, In: *PLOS ONE*. 8, 11, 8 p., e78865.

Association of coexisting diabetes and depression with mortality after myocardial infarction

Bot, M., Pouwer, F., Zuidersma, M., van Melle, J. P. & de Jonge, P., 2012, In: *Diabetes Care*. 35, 3, p. 503-509

Biological effects of add-on eicosapentaenoic acid supplementation in diabetes mellitus and co-morbid depression: a randomized controlled trial

Mocking, R. J. T., Assies, J., Bot, M., Jansen, E. H. J. M., Schene, A. H. & Pouwer, F., 2012, In: *PLOS ONE*. 7, 11, 11 p., e49431.

Diabetes MILES--Australia (management and impact for long-term empowerment and success): methods and sample characteristics of a national survey of the psychological aspects of living with type 1 or type 2 diabetes in Australian adults

Speight, J., Browne, J. L., Holmes-Truscott, E., Hendrieckx, C. & Pouwer, F., 2012, In: *BMC Public Health*. 12, 120, 13 p.

Diabetes MILES--The Netherlands: rationale, design and sample characteristics of a national survey examining the psychosocial aspects of living with diabetes in Dutch adults

Nefs, G., Bot, M., Browne, J. L., Speight, J. & Pouwer, F., 2012, In: *BMC Public Health*. 12, 925, 11 p.

Higher levels of psychological distress are associated with a higher risk of incident diabetes during 18 year follow-up: results from the British household panel survey

Mommersteeg, P. M. C., Herr, R., Zijlstra, W. P., Schneider, S. & Pouwer, F., 2012, In: *BMC Public Health*. 12, 10 p., 1109.

Is a severe clinical profile an effect modifier in a Web-based depression treatment for adults with type 1 or type 2 diabetes? Secondary analyses from a randomized controlled trial

van Bastelaar, K. M. P., Pouwer, F., Cuijpers, P., Riper, H., Twisk, J. W. R. & Snoek, F. J., 2012, In: *Journal of Medical Internet Research*. 14, 1, 12 p., e2.

Managing co-morbid depression and anxiety in primary care patients with asthma and/or chronic obstructive pulmonary disease: study protocol for a randomized controlled trial

Pommer, A. M., Pouwer, F., Denollet, J. & Pop, V. J. M., 2012, In: *Trials*. 13, 6, 7 p.

Personality as a risk factor for the metabolic syndrome: a systematic review
Mommersteeg, P. M. C. & Pouwer, F., 2012, In: Journal of Psychosomatic Research. 73, 5, p. 326-333

Quality of life of children with type 1 diabetes: a systematic review
Nieuwesteeg, A. M., Pouwer, F., van der Kamp, R., van Bakel, H. J. A., Aanstoot, H-J. & Hartman, E. E., 2012, In: Current Diabetes Reviews. 8, 6, p. 434-443

Screening for type 2 diabetes does not reduce mortality over 10 years
Adriaanse, M. C. & Pouwer, F., 2012, In: BMJ Evidence-Based Medicine. 18, 5, p. 1741-1748

Screening tools used for measuring depression among people with Type 1 and Type 2 diabetes: a systematic review
Roy, T., Lloyd, C. E., Pouwer, F., Holt, R. I. G. & Sartorius, N., 2012, In: Diabetic Medicine. 29, 2, p. 164-175

Suboptimal glycaemic control in type 2 diabetes: a key role for anhedonia?
Nefs, G., Pouwer, F., Denollet, J., Kramer, M. H. H., Wijnands-van Gent, C. J. M. & Pop, V. J. M., 2012, In: Journal of Psychiatric Research. 46, 4, p. 549-454

Testing the effectiveness of a self-efficacy based exercise intervention for inactive people with type 2 diabetes mellitus: design of a controlled clinical trial
van der Heijden, M. M. P., Pouwer, F., Romeijnders, A. C. & Pop, V. J. M., 2012, In: BMC Public Health. 12, 331, 8 p.

The course of depressive symptoms in primary care patients with type 2 diabetes: results from the Diabetes, Depression, Type D Personality Zuidoost-Brabant (DiaDDZoB) Study
Nefs, G., Pouwer, F., Denollet, J. & Pop, V. J. M., 2012, In: Diabetologia. 55, 3, p. 608-616

The longitudinal association between glycaemic control and health-related quality of life following insulin therapy optimisation in type 2 diabetes patients. A prospective observational study in secondary care
Hajós, T. R. S., Pouwer, F., de Grooth, R., Holleman, F., Twisk, J. W. R., Diamant, M. & Snoek, F. J., 2012, In: Quality of Life Research. 21, 8, p. 1359-1365

Type D (distressed) personality in primary care patients with type 2 diabetes: validation and clinical correlates of the DS14 assessment
Nefs, G., Pouwer, F., Pop, V. J. M. & Denollet, J., 2012, In: Journal of Psychosomatic Research. 72, 4, p. 251-257

Initiation of insulin glargine in patients with Type 2 diabetes in suboptimal glycaemic control positively impacts health-related quality of life. A prospective cohort study in primary care
Hajós, T. R. S., Pouwer, F., de Grooth, R., Holleman, F., Twisk, J. W. R., Diamant, M. & Snoek, F. J., Sept 2011, In: Diabetic Medicine. 28, 9, p. 1096-1027 p.

Validation of the Turkish version of the Centre for Epidemiologic Studies Depression Scale (CES-D) in patients with type 2 diabetes mellitus
Lehmann, V., Makine, C., Karşıdağ, C., Kadioğlu, P., Karşıdağ, K. & Pouwer, F., 26. Jul 2011, In: BMC Medical Research Methodology. 11, p. 109

Quality of the parent-child interaction in young children with type 1 diabetes mellitus: study protocol
Nieuwesteeg, A. M., Pouwer, F., van Bakel, H. J., Emons, W. H., Aanstoot, H-J., Odink, R. & Hartman, E. E., 14. Apr 2011, In: BMC Pediatrics. 11, p. 28

Limited effect of screening for depression with written feedback in outpatients with diabetes mellitus: a randomised controlled trial
Pouwer, F., Tack, C. J., Geelhoed-Duijvestijn, P. H. L. M., Bazelmans, E., Beekman, A. T. F., Heine, R. J. & Snoek, F. J., Apr 2011, In: Diabetologia. 54, 4, p. 741-88 p.

Prevalence of depression in individuals with impaired glucose metabolism or undiagnosed diabetes: a systematic review and meta-analysis of the European Depression in Diabetes (EDID) Research Consortium

Nouwen, A., Nefs, G., Caramlau, I., Connock, M., Winkley, K., Lloyd, C. E., Peyrot, M., Pouwer, F. & European Depression in Diabetes Research Consortium, Mar 2011, In: Diabetes Care. 34, 3, p. 752-62 11 p.

Maternal depression and child development after prenatal DHA supplementation

Assies, J., Mocking, R. J. T. & Pouwer, F., 26. Jan 2011, In: J A M A: The Journal of the American Medical Association. 305, 4, p. 360; author reply 360-1

Development and reach of a web-based cognitive behavioural therapy programme to reduce symptoms of depression and diabetes-specific distress

van Bastelaar, K. M. P., Cuijpers, P., Pouwer, F., Riper, H. & Snoek, F. J., 2011, In: Patient Education and Counseling. 84, 1, p. 49-55

Development of the Tilburg Pregnancy Distress Scale: the TPDS

Pop, V. J. M., Pommer, A. M., Pop-Purceleanu, M., Wijnen, H. A. A., Bergink, V. & Pouwer, F., 2011, In: BMC Pregnancy and Childbirth. 11, 80, 8 p.

Dimensionality and scale properties of the Edinburgh Depression Scale (EDS) in patients with type 2 diabetes mellitus: the DiaDDzoB study

de Cock, E. S. A., Emons, W. H. M., Nefs, G., Pop, V. J. M. & Pouwer, F., 2011, In: BMC Psychiatry. 11, 141, 19 p., 141.

Disease management for co-morbid depression and anxiety in diabetes mellitus: design of a randomised controlled trial in primary care

Stoop, C. H., Spek, V. R. M., Pop, V. J. M. & Pouwer, F., 2011, In: BMC Family Practice. 12, 139, 6 p., 139.

Supplementation with eicosapentaenoic omega-3 fatty acid does not influence serum brain-derived neurotrophic factor in diabetes mellitus patients with major depression: a randomized controlled pilot study

Bot, M., Pouwer, F., Assies, J., Jansen, E. H. J. M., Beekman, A. T. F. & de Jonge, P., 2011, In: Neuropsychobiology. 63, 4, p. 219-23 5 p.

Testing the effectiveness of a mindfulness-based intervention to reduce emotional distress in outpatients with diabetes (DiaMind): design of a randomized controlled trial

VAN Son, J., Nyklíček, I., Pop, V. J. M. & Pouwer, F., 2011, In: BMC Public Health. 11, 131, 11 p., 131.

Validation of the Turkish version of the problem areas in diabetes scale

Huis In 't Veld, E. M. J., Makine, C., Nouwen, A., Karşıdağ, C., Kadioğlu, P., Karşıdağ, K. & Pouwer, F., 2011, In: Cardiovascular Psychiatry and Neurology. 2011, p. 315068

Web-based depression treatment for type 1 and type 2 diabetic patients: a randomized, controlled trial

van Bastelaar, K. M. P., Pouwer, F., Cuijpers, P., Riper, H. & Snoek, F. J., 2011, In: Diabetes Care. 34, 2, p. 320-325

Two recently published meta-analyses on the effectiveness of mindfulness-based interventions: what should the reader make of it?

Nyklíček, I., VAN Son, J. & Pouwer, F., Dec 2010, In: Journal of Psychosomatic Research. 69, 6, p. 613-4; author reply 614-5

Type 2 diabetes mellitus as a risk factor for the onset of depression: a systematic review and meta-analysis

Nouwen, A., Winkley, K., Twisk, J. W. R., Lloyd, C. E., Peyrot, M., Ismail, K., Pouwer, F. & European Depression in Diabetes (EDID) Research Consortium, Dec 2010, In: Diabetologia. 53, 12, p. 2480-6 7 p.

Predictors of incident major depression in diabetic outpatients with subthreshold depression

Bot, M., Pouwer, F., Ormel, J., Slaets, J. P. J. & de Jonge, P., Nov 2010, In: Diabetic Medicine. 27, 11, p. 1295-301 7 p.

Psychophysiological biomarkers explaining the association between depression and prognosis in coronary artery patients: a critical review of the literature

de Jonge, P., Rosmalen, J. G. M., Kema, I. P., Doornbos, B., van Melle, J. P., Pouwer, F. & Kupper, N., Sept 2010, In: Neuroscience and biobehavioral reviews. 35, 1, p. 84-90 7 p.

The Epidemiology of Depression and Diabetes

Lloyd, C. E., Hermanns, N., Nouwen, A., Pouwer, F., Underwood, L. & Winkley, K., 3. Aug 2010, *Depression and Diabetes*. Katon, W., Maj, M. & Sartorius, N. (eds.). Wiley, p. 1-27

Psychological risk factors of micro- and macrovascular outcomes in primary care patients with type 2 diabetes: rationale and design of the DiaDDZoB Study

Nefs, G., Pouwer, F., Denollet, J. & Pop, V. J., 1. Jul 2010, In: BMC Public Health. 10, p. 388

Diabetes-specific emotional distress mediates the association between depressive symptoms and glycaemic control in Type 1 and Type 2 diabetes

van Bastelaar, K. M. P., Pouwer, F., Geelhoed-Duijvestijn, P. H. L. M., Tack, C. J., Bazelmans, E., Beekman, A. T. F., Heine, R. J. & Snoek, F. J., Jul 2010, In: Diabetic Medicine. 27, 7, p. 798-803 6 p.

Does emotional stress cause type 2 diabetes mellitus? A review from the European Depression in Diabetes (EDID) Research Consortium

Pouwer, F., Kupper, N. & Adriaanse, M. C., Feb 2010, In: Drug Discovery Today. 9, 45, p. 112-8 7 p.

Prevalence of comorbid depression is high in out-patients with Type 1 or Type 2 diabetes mellitus. Results from three out-patient clinics in the Netherlands

Pouwer, F., Geelhoed-Duijvestijn, P. H. L. M., Tack, C. J., Bazelmans, E., Beekman, A. J., Heine, R. J. & Snoek, F. J., Feb 2010, In: Diabetic Medicine. 27, 2, p. 217-24 8 p.

Eicosapentaenoic acid as an add-on to antidepressant medication for co-morbid major depression in patients with diabetes mellitus: a randomized, double-blind placebo-controlled study

Bot, M., Pouwer, F., Assies, J., Jansen, E. H. J. M., Diamant, M., Snoek, F. J., Beekman, A. T. F. & De Jonge, P., 2010, In: Journal of Affective Disorders. 126, 1-2, p. 282-6 5 p.

Plasma and erythrocyte fatty acid patterns in patients with recurrent depression: a matched case-control study

Assies, J., Pouwer, F., Lok, A., Mocking, R. J. T., Bockting, C. L. H., Visser, I., Abeling, N. G. G. M., Duran, M. & Schene, A. H., 2010, In: PLOS ONE. 5, 5, p. e10635

Should we screen for emotional distress in type 2 diabetes mellitus?

Pouwer, F., Dec 2009, In: Nature Reviews Endocrinology. 5, 12, p. 665-71 7 p.

Insulin therapy and quality of life. A review

Pouwer, F. & Hermanns, N., Sept 2009, In: Diabetes/Metabolism Research and Reviews. 25 Suppl 1, p. S4-S10

Online cognitieve gedragstherapie voor diabetespatiënten met depressieve klachten: een gerandomiseerd gecontroleerd onderzoek

Van Bastelaar, K. M. P., Pouwer, F., Cuijpers, P. & Snoek, F. J., 1. Aug 2009, In: Psychologie en Gezondheid. 37, 4, p. 222-228

Depressive symptoms are associated with physical inactivity in patients with type 2 diabetes. The DIAZOB Primary Care Diabetes study

Koopmans, B., Pouwer, F., de Bie, R. A., van Rooij, E. S., Leusink, G. L. & Pop, V. J. M., Jun 2009, In: Family Practice. 26, 3, p. 171-3 3 p.

Symptoms of depression and diabetes-specific emotional distress are associated with a negative appraisal of insulin therapy in insulin-naïve patients with Type 2 diabetes mellitus. A study from the European Depression in Diabetes [EDID] Research Consortium

Makine, C., Karşıdağ, C., Kadioğlu, P., İlkova, H., Karşıdağ, K., Skovlund, S. E., Snoek, F. J. & Pouwer, F., Jan 2009, In: *Diabetic Medicine*. 26, 1, p. 28-33 6 p.

Associations between vascular co-morbidities and depression in insulin-naïve diabetes patients: the DIAZOB Primary Care Diabetes study

Koopmans, B., Pouwer, F., de Bie, R. A., Leusink, G. L., Denollet, J. K. L. & Pop, V. J. M., 2009, In: *Diabetologia*. 52, 10, p. 2056-63 8 p.

Depression and quality of life in patients with diabetes: a systematic review from the European depression in diabetes (EDID) research consortium

Schram, M. T., Baan, C. A. & Pouwer, F., 2009, In: *Current Diabetes Reviews*. 5, 2, p. 112-9 8 p.

Depression and type 2 diabetes over the lifespan: a meta-analysis. Response to Mezuk et al

Nouwen, A., Lloyd, C. E. & Pouwer, F., 2009, In: *Diabetes Care*. 32, 5, p. e56; author reply e57

Serious diabetes-specific emotional problems in patients with type 2 diabetes who have different levels of comorbid depression: a Polish study from the European Depression in Diabetes (EDID) Research Consortium

Kokoszka, A., Pouwer, F., Jodko, A., Radzio, R., Mućko, P., Bieńkowska, J., Kuligowska, E., Smoczyńska, O. & Skłodowska, Z., 2009, In: *European Psychiatry*. 24, 7, p. 425-30 6 p.

Diabetes-related symptom distress in association with glucose metabolism and comorbidity: the Hoorn Study

Adriaanse, M. C., Pouwer, F., Dekker, J. M., Nijpels, G., Stehouwer, C. D. A., Heine, R. J. & Snoek, F. J., 31. Dec 2008, In: *Diabetes Care*. 31, 12, p. 2268-2270

Letter to the editor

Pouwer, F., 1. Aug 2008, In: *Quality of Life Research*. 17, 6, p. 963-964 2 p.

Psychosociale interventies bij mensen met diabetes

Keers, J. C. & Pouwer, F., 1. Aug 2008, In: *Psychologie en Gezondheid*. 36, 4, p. 209-220

Symptoms of depression in people with impaired glucose metabolism or Type 2 diabetes mellitus: The Hoorn Study

Adriaanse, M. C., Dekker, J. M., Heine, R. J., Snoek, F. J., Beekman, A. J., Stehouwer, C. D. A., Bouter, L. M., Nijpels, G. & Pouwer, F., Jul 2008, In: *Diabetic Medicine*. 25, 7, p. 843-9

Personality characteristics in adolescence predict long-term changes in body fatness

Koppes, L. L. J., de Boer, M. R., Samoocha, D., Kreuk, I. M. T., Pouwer, F., Twisk, J. W. R. & van Mechelen, W., Mar 2008, In: *Diabetes Research and Clinical Practice*. 79, 3, p. e10-3

Web-based cognitive behavioural therapy (W-CBT) for diabetes patients with co-morbid depression: design of a randomised controlled trial

van Bastelaar, K. M. P., Pouwer, F., Cuijpers, P., Twisk, J. W. R. & Snoek, F. J., 19. Feb 2008, In: *BMC Psychiatry*. 8, p. 9

One-carbon metabolism and depression

Assies, J. & Pouwer, F., 2008, In: *British Journal of Psychiatry*. 193, 4, p. 344; author reply 344

Development and validation of the insulin treatment appraisal scale (ITAS) in patients with type 2 diabetes

Snoek, F. J., Skovlund, S. E. & Pouwer, F., 20. Dec 2007, In: *Health and Quality of Life Outcomes*. 5, p. 69

Validation of the WHO-5 Well-Being Index in adolescents with type 1 diabetes

de Wit, M., Pouwer, F., Gemke, R. J. B. J., Delemarre-van de Waal, H. A. & Snoek, F. J., Aug 2007, In: *Diabetes Care*. 30, 8, p. 2003-6 4 p.

No evidence for increased self-reported cognitive failure in Type 1 and Type 2 diabetes: a cross-sectional study

Wessels, A. M., Pouwer, F., Geelhoed-Duijvestijn, P. H. L. M., Snel, M., Kostense, P. J., Scheltens, P., Heine, R. J. & Snoek, F. J., Jul 2007, In: *Diabetic Medicine*. 24, 7, p. 735-40 6 p.

Monitoring health related quality of life in adolescents with diabetes: a review of measures

de Wit, M., Delemarre-van de Waal, H. A., Pouwer, F., Gemke, R. J. B. J. & Snoek, F. J., 2007, In: Archives of Disease in Childhood. 92, 5, p. 434-9 6 p.

Associations between depressive symptoms and insulin resistance: the Hoorn Study

Adriaanse, M. C., Dekker, J. M., Nijpels, G., Heine, R. J., Snoek, F. J. & Pouwer, F., Dec 2006, In: Diabetologia. 49, 12, p. 2874-7

Nurses' recognition and registration of depression, anxiety and diabetes-specific emotional problems in outpatients with diabetes mellitus

Pouwer, F., Beekman, A. T. F., Lubach, C. & Snoek, F. J., Feb 2006, In: Patient Education and Counseling. 60, 2, p. 235-40 6 p.

Depression as a risk factor for the onset of type 2 diabetes mellitus. A meta-analysis

Knol, M. J., Twisk, J. W. R., Beekman, A. T. F., Heine, R. J., Snoek, F. J. & Pouwer, F., 2006, In: Diabetologia. 49, 5, p. 837-45 9 p.

Fat food for a bad mood. Could we treat and prevent depression in Type 2 diabetes by means of omega-3 polyunsaturated fatty acids? A review of the evidence

Pouwer, F., Nijpels, G., Beekman, A. T. F., Dekker, J. M., van Dam, R. M., Heine, R. J. & Snoek, F. J., Nov 2005, In: Diabetic Medicine. 22, 11, p. 1465-75 11 p.

Serious diabetes-specific emotional problems and depression in a Croatian-Dutch-English Survey from the European Depression in Diabetes [EDID] Research Consortium

Pouwer, F., Skinner, T. C., Pibernik-Okanovic, M., Beekman, A. T. F., Craddock, S., Szabo, S., Metelko, Z. & Snoek, F. J., Nov 2005, In: Diabetes Research and Clinical Practice. 70, 2, p. 166-73 8 p.

Are factor analytical techniques used appropriately in the validation of health status questionnaires? A systematic review on the quality of factor analysis of the SF-36: Commentary

De Vet, H. C. W., Adér, H. J., Terwee, C. B. & Pouwer, F., 1. Jun 2005, In: Quality of Life Research. 14, 5, p. 1219-1224 6 p.

Are factor analytical techniques used appropriately in the validation of health status questionnaires? A systematic review on the quality of factor analysis of the SF-36

de Vet, H. C. W., Adér, H. J., Terwee, C. B. & Pouwer, F., Jun 2005, In: Quality of Life Research. 14, 5, p. 1203-18; dicussion 1219-21, 1223-4

Response

de Vet, H., Adér, H. J., Terwee, C. B. & Pouwer, F., Jun 2005, In: Quality of Life Research. 14, 5, p. 1223-4 2 p.

Depressive symptoms, insulin resistance, and risk of diabetes in women at midlife: response to Everson-Rose et al

Pouwer, F. & de Jonge, P., 2005, In: Diabetes Care. 28, 5, p. 1265-6; author reply 1266

Schizophrenia, syndrome X, and omega-3 fatty acids

Pouwer, F., Lieveise, R., Diamant, M. & Assies, J., 2004, In: The American Journal of Psychiatry. 161, 10, p. 1926

Rates and risks for co-morbid depression in patients with Type 2 diabetes mellitus: results from a community-based study

Pouwer, F., Beekman, A. T. F., Nijpels, G., Dekker, J. M., Snoek, F. J., Kostense, P. J., Heine, R. J. & Deeg, D. J. H., Jul 2003, In: Diabetologia. 46, 7, p. 892-8 7 p.

The confidence in diabetes self-care scale: psychometric properties of a new measure of diabetes-specific self-efficacy in Dutch and US patients with type 1 diabetes

Van Der Ven, N. C. W., Weinger, K., Yi, J., Pouwer, F., Adér, H. J., Van Der Ploeg, H. M. & Snoek, F. J., Mar 2003, In: Diabetes Care. 26, 3, p. 713-8 6 p.

–to: M. Koopmanschap: Coping with Type 2 diabetes: the patient's perspective. Diabetologia 45:S18-S22
Pouwer, F. & Adriaanse, M. C., Feb 2003, In: Diabetologia. 46, 2, p. 302-3 2 p.

Continuous intraperitoneal insulin infusion in patients with 'brittle' diabetes: favourable effects on glycaemic control and hospital stay

DeVries, J. H., Eskes, S. A., Snoek, F. J., Pouwer, F., Van Ballegooie, E., Spijker, A. J., Kostense, P. J., Seubert, M. & Heine, R. J., Jun 2002, In: Diabetic Medicine. 19, 6, p. 496-501 6 p.

Patients' Evaluation of the Quality of Diabetes Care (PEQD): development and validation of a new instrument

Pouwer, F. & Snoek, F. J., Jun 2002, In: BMJ Quality and Safety. 11, 2, p. 131-6 6 p.

Monitoring of psychological well-being in outpatients with diabetes: effects on mood, HbA(1c), and the patient's evaluation of the quality of diabetes care: a randomized controlled trial

Pouwer, F., Snoek, F. J., Van Der Ploeg, H. M., Adér, H. J. & Heine, R. J., Nov 2001, In: Diabetes Care. 24, 11, p. 1929-35 7 p.

Association between symptoms of depression and glycaemic control may be unstable across gender

Pouwer, F. & Snoek, F. J., Jul 2001, In: Diabetic Medicine. 18, 7, p. 595-8 4 p.

Diabetes-related emotional distress in Dutch and U.S. diabetic patients: cross-cultural validity of the problem areas in diabetes scale

Snoek, F. J., Pouwer, F., Welch, G. W. & Polonsky, W. H., Sept 2000, In: Diabetes Care. 23, 9, p. 1305-1309

Diabetes Fear of Injecting and Self-Testing Questionnaire: a psychometric evaluation

Mollema, E. D., Snoek, F. J., Pouwer, F., Heine, R. J. & Van Der Ploeg, H. M., Jun 2000, In: Diabetes Care. 23, 6, p. 765-769

Psychological distress two years after diagnosis of breast cancer: frequency and prediction

Bleiker, E. M., Pouwer, F., Van Der Ploeg, H. M., Leer, J. W. & Adér, H. J., Jun 2000, In: Patient Education and Counseling. 40, 3, p. 209-17 9 p.

The well-being questionnaire: evidence for a three-factor structure with 12 items (W-BQ12)

Pouwer, F., Snoek, F. J., Van Der Ploeg, H. M., Adér, H. J. & Heine, R. J., Mar 2000, In: Psychological Medicine. 30, 2, p. 455-62 8 p.

Patiënten die na de reguliere behandeling voor borstkanker voor het eerst alternatieve geneeswijzen gebruiken, rapporteren meer psychische klachten

Pouwer, F., 1. Dec 1999, In: Nederlands Tijdschrift voor Geneeskunde. 143, 38, 1 p.

The 12-item well-being questionnaire. An evaluation of its validity and reliability in Dutch people with diabetes

Pouwer, F., Van Der Ploeg, H. M., Adér, H. J., Heine, R. J. & Snoek, F. J., Dec 1999, In: Diabetes Care. 22, 12, p. 2004-10 7 p.

Factor structure of the Disability and Impact Profile in patients with multiple sclerosis

Cohen, J. L., Pouwer, F., Pfenning, L. E., Lankhorst, G. J., Van Der Ploeg, H. M., Polman, C. H., Adér, H. J., Jønsson, A. & Vleugels, L., 1999, In: Quality of Life Research. 8, 1-2, p. 141-50 10 p.

Use of alternative medicine by women with breast cancer

Pouwer, F., 1999, In: The New England Journal of Medicine. 341, 15, p. 1155-6; author reply 1156-7

Ceiling effect reduces the validity of the Diabetes Treatment Satisfaction Questionnaire

Pouwer, F., Snoek, F. J. & Heine, R. J., Nov 1998, In: Diabetes Care. 21, 11, 2039.

Dwalingen in de methodologie. II. Bias door vragenlijsten

Pouwer, F., Van Der Ploeg, H. M. & Bramsen, I., 4. Jul 1998, In: Nederlands Tijdschrift voor Geneeskunde. 142, 27, p. 1556-8 3 p.

Psychological functioning in primary progressive versus secondary progressive multiple sclerosis

Vleugels, L., Pfenning, L. E., Pouwer, F., Cohen, J. L., Ketelaer, P., Polman, C. H., Lankhorst, G. J. & Van Der Ploeg, H. M., Mar 1998, In: British Journal of Developmental Psychology. 71 (Pt 1), p. 99-106 8 p.

A comparison of the standard and the computerized versions of the Well-being Questionnaire (WBQ) and the Diabetes Treatment Satisfaction Questionnaire (DTSQ)

Pouwer, F., Snoek, F. J., Van Der Ploeg, H. M., Heine, R. J. & Brand, A. N., Jan 1998, In: Quality of Life Research. 7, 1, p. 33-8 6 p.

Press/Media

Det er hårdt arbejde at være diabetespatient

Pouwer, F.
24/02/2019
1 Media contribution

Diabetescenter sætter fokus på psykologiske elementer i behandlingen

Pouwer, F.
22/11/2018
1 Media contribution

Forskere forsøger at forudsige risiko for demens hos T2D-patienter

Pouwer, F.
23/02/2020
1 Media contribution

Forskere vil se, om de kan aflæse risiko for demens i øjnene hos type 2-diabetespatienter

Pouwer, F.
04/03/2020
1 Media contribution

Forskergruppe: Sundhedsvæsenet er under pres – sundhedspsykologien kan hjælpe

Pouwer, F., Christiansen, J., Rottmann, N., Skov, O., Ahm, R., Behrendt, S., Pedersen, S. S. & Andersen, T. E.
03/07/2023
1 Media contribution

Hollandsk professor til Odense

Pouwer, F.
20/11/2018
1 Media contribution

NY I JOB

Pouwer, F.
10/12/2018
1 Media contribution

Nyt om navne

Pouwer, F.
28/11/2018
1 Media contribution

Personer med alvorlig psykisk sygdom er mere udsatte for diabeteskomplikationer

Pouwer, F.
17/05/2022
1 Media contribution

Professorer: Somatiske patienters psykiske problemer underbehandles

Pouwer, F.
29/08/2018
1 Media contribution

Professor i psykologi til diabetesforskning

Pouwer, F.
26/11/2018
1 Media contribution

RUNDE FØDSELSDAGE TORSDAG DEN 1. NOVEMBER

Pouwer, F.
01/11/2018
1 Media contribution

SDU deltager i storstilet europæisk diabetes-indsats

Pouwer, F.
25/05/2018
1 Media contribution

SDU MED I STOR DIABETES-INDSATS

Pouwer, F.
30/07/2018
1 Media contribution

Teaching and supervision

1. Communication skills training year 1-4 Medicine, Vrije Universiteit Amsterdam, Netherlands

Pouwer, F.
01/01/1993 → 31/12/2001

2. Supervision of PhD students and scientific projects, VU Amsterdam, Tilburg University, and University of Southern Denmark

Pouwer, F.
01/01/2005 → 01/04/2022

3. Lectures and working groups about medical psychology and diabetes in the course Pathology (Ziekteleer), Tilburg University, Netherlands

Pouwer, F.
01/08/2008 → 31/12/2016

4. Director of the 2 year master Medical Psychology, Tilburg University, Netherlands

Pouwer, F.
01/01/2010 → 01/01/2014

5. Coordinator master thesis medical psychology, Tilburg University, Netherlands

Pouwer, F.

01/01/2010 → 31/12/2016

6. Coordinator of the course Advanced scientific skills for the medical psychologist, Tilburg University, Netherlands

Pouwer, F.

01/01/2010 → 31/12/2016

7. Master thesis Psychology, University of Southern Denmark

Pouwer, F.

01/01/2017 → 31/12/2020

8. B07, Clinical Psychology, University of Southern Denmark (2 lectures)

Pouwer, F.

26/02/2019 → 07/03/2019

9. B06 Medical Psychology, University of Southern Denmark (coordination and teaching)

Pouwer, F. & Lindekilde, N.

01/11/2017 → ...