

**CSF-Neurofilament Light Chain Levels in NMDAR and LGI1 Encephalitis
A National Cohort Study**

Nissen, Mette Scheller; Ryding, Matias; Nilsson, Anna Christine; Madsen, Jonna Skov; Olsen, Dorte Aalund; Halekoh, Ulrich; Lydolph, Magnus; Illes, Zsolt; Blaabjerg, Morten

Published in:
Frontiers in Immunology

DOI:
10.3389/fimmu.2021.719432

Publication date:
2021

Document version:
Final published version

Document license:
CC BY

Citation for pulished version (APA):
Nissen, M. S., Ryding, M., Nilsson, A. C., Madsen, J. S., Olsen, D. A., Halekoh, U., Lydolph, M., Illes, Z., & Blaabjerg, M. (2021). CSF-Neurofilament Light Chain Levels in NMDAR and LGI1 Encephalitis: A National Cohort Study. *Frontiers in Immunology*, 12, Article 719432. <https://doi.org/10.3389/fimmu.2021.719432>

Go to publication entry in University of Southern Denmark's Research Portal

Terms of use

This work is brought to you by the University of Southern Denmark.
Unless otherwise specified it has been shared according to the terms for self-archiving.
If no other license is stated, these terms apply:

- You may download this work for personal use only.
- You may not further distribute the material or use it for any profit-making activity or commercial gain
- You may freely distribute the URL identifying this open access version

If you believe that this document breaches copyright please contact us providing details and we will investigate your claim.
Please direct all enquiries to puresupport@bib.sdu.dk



CSF-Neurofilament Light Chain Levels in NMDAR and LGI1 Encephalitis: A National Cohort Study

Mette Scheller Nissen^{1,2,3}, Matias Ryding^{2,3,4}, Anna Christine Nilsson^{2,5},
Jonna Skov Madsen^{6,7}, Dorte Aalund Olsen⁶, Ulrich Halekoh⁸, Magnus Lydolph⁹,
Zsolt Illes^{1,2,3,4*†} and Morten Blaabjerg^{1,2,3,4*†}

¹ Department of Neurology, Odense University Hospital, Odense, Denmark, ² Department of Clinical Research, University of Southern Denmark, Odense, Denmark, ³ Brain Research - Inter Disciplinary Guided Excellence (BRIDGE), Odense, Denmark, ⁴ Department of Neurobiology Research, Institute of Molecular Medicine, University of Southern Denmark, Odense, Denmark, ⁵ Department of Clinical Immunology, Odense University Hospital, Odense, Denmark, ⁶ Department of Biochemistry and Immunology, Lillebælt Hospital, University Hospital of Southern Denmark, Vejle, Denmark, ⁷ Department of Regional Health Research, University of Southern Denmark, Odense, Denmark, ⁸ Department of Epidemiology, Biostatistics and Biodemography, Institute of Public Health, University of Southern Denmark, Odense, Denmark, ⁹ Danish National Biobank, Statens Serum Institut, Copenhagen, Denmark

OPEN ACCESS

Edited by:

Dimitrios Petrou Bogdanos,
University of Thessaly, Greece

Reviewed by:

Sarosh R. Irani,
University of Oxford, United Kingdom
Maarten Jan Titulaer,
Sophia Children's Hospital,
Netherlands

*Correspondence:

Morten Blaabjerg
Morten.blaabjerg1@rsyd.dk
Zsolt Illes
Zsolt.illes@rsyd.dk

[†]These authors have contributed
equally to this work and share
last authorship

Specialty section:

This article was submitted to
Autoimmune and Autoinflammatory
Disorders,
a section of the journal
Frontiers in Immunology

Received: 02 June 2021

Accepted: 29 November 2021

Published: 16 December 2021

Citation:

Nissen MS, Ryding M, Nilsson AC,
Madsen JS, Olsen DA, Halekoh U,
Lydolph M, Illes Z and Blaabjerg M
(2021) CSF-Neurofilament Light
Chain Levels in NMDAR and LGI1
Encephalitis: A National Cohort Study.
Front. Immunol. 12:719432.
doi: 10.3389/fimmu.2021.719432

Background and Objectives: The two most common autoimmune encephalitides (AE), N-methyl-D-Aspartate receptor (NMDAR) and Leucine-rich Glioma-Inactivated 1 (LGI1) encephalitis, have been known for more than a decade. Nevertheless, no well-established biomarkers to guide treatment or estimate prognosis exist. Neurofilament light chain (NfL) has become an unspecific screening marker of axonal damage in CNS diseases, and has proven useful as a diagnostic and disease activity marker in neuroinflammatory diseases. Only limited reports on NfL in AE exist. We investigated NfL levels at diagnosis and follow-up in NMDAR and LGI1-AE patients, and evaluated the utility of CSF-NfL as a biomarker in AE.

Methods: Patients were included from the National Danish AE cohort (2009-present) and diagnosed based upon autoantibody positivity and diagnostic consensus criteria. CSF-NfL was analyzed by single molecule array technology. Clinical and diagnostic information was retrospectively evaluated and related to NfL levels at baseline and follow-up. NMDAR-AE patients were subdivided into: idiopathic/teratoma associated or secondary NMDAR-AE (post-viral or concomitant with malignancies/demyelinating disease).

Results: A total of 74 CSF samples from 53 AE patients (37 NMDAR and 16 LGI1 positive) were included in the study. Longitudinal CSF-NfL levels was measured in 21 patients. Median follow-up time was 23.8 and 43.9 months for NMDAR and LGI1-AE respectively. Major findings of this study are: i) CSF-NfL levels were higher in LGI1-AE than in idiopathic/teratoma associated NMDAR-AE at diagnosis; ii) CSF-NfL levels in NMDAR-AE patients distinguished idiopathic/teratoma cases from cases with other underlying etiologies (post-viral or malignancies/demyelinating diseases) and iii) Elevated CSF-NfL at diagnosis seems to be associated with worse long-term disease outcomes in both NMDAR and LGI1-AE.

Discussion: CSF-NfL measurement may be beneficial as a prognostic biomarker in NMDAR and LGI1-AE, and high CSF-NfL could foster search for underlying etiologies in NMDAR-AE. Further studies on larger cohorts, using standardized methods, are warranted.

Keywords: autoimmune encephalitis (AE), neurofilament light (NfL) chain, biomarker, NMDAR encephalitis (NMDARE), LGI1 encephalitis, outcome

INTRODUCTION

The two most common types of autoimmune encephalitides (AE) are *N*-methyl-D-aspartate receptor encephalitis (NMDAR-AE) and Leucine-rich Glioma-Inactivated 1 encephalitis (LGI1-AE) (1–3). LGI1-AE commonly affects middle-aged and older adults, has a male predisposition and presents with seizures and cognitive decline. NMDAR-AE mainly affects children and young adults, predominantly females and presents with psychiatric symptoms, seizures, decreased consciousness and autonomic dysfunction (4–7). While LGI1-AE is mostly thought to be a non-complement fixing Immunoglobulin G4 (IgG4) mediated disease, NMDAR-AE is driven mainly by IgG1, which has the potential to initiate complement activation (8–10). NMDAR-AE can be seen in combination with other diseases, such as malignancies, demyelinating diseases or after herpes simplex virus 1 encephalitis (HSE) (4, 11–13).

AE's can be challenging to treat, and good biomarkers to assist physician's decision-making are scarce. Naturally, immunological biomarkers have been in focus in AE patients. Thus, Chemokine (C-X-C motif) ligand 13 (CXCL-13) has been reported as a potential biomarker of treatment response and relapse rate in a bigger cohort of NMDAR-AE patients, but long-term outcomes in relation to CXCL-13 remains to be further elucidated (14). Similarly, cytokine studies, mostly in NMDAR-AE patients, have suggested particularly Interleukin-17A as a biomarker of disease severity at onset and a poor prognosis (15–18). Limited studies have investigated neuronal surface autoantibody titers as diagnostic or prognostic biomarkers and high titers may indicate poor prognosis and malignancy (4, 19, 20). Studies with acute and longitudinal measurements of autoantibodies and clinical correlates are limited, and patients can display high titers years after recovery (8, 21). The knowledge on biomarkers of neuronal damage in relation to long-term outcomes in AE remains scarce.

Neurofilament light chain (NfL) are scaffolding proteins solely expressed in the neuronal cytoskeleton and a reliable indicator of axonal damage. They have been studied as emerging biomarkers of neurodegeneration, but also increasingly as a biomarker in neuroinflammation-related axonal damage. NfL has been shown to correlate with disease severity and progression/outcome in diseases like optic neuritis, multiple sclerosis, neurosarcoidosis and myelin oligodendrocyte glycoprotein associated diseases (22–27).

Here we investigate CSF-NfL levels in the acute phase of NMDAR- and LGI1-AE patients and evaluate its utility as a

diagnostic and prognostic biomarker in the two commonest types of AE.

MATERIAL AND METHODS

Patient Materials and Samples

From 2009-2018, 74 CSF samples (49 NMDAR and 25 LGI1 IgG positive) from 53 patients (37 NMDAR-AE and 16 LGI1-AE) were obtained from the two only test centers in Denmark (Danish National Biobank, Statens Serum Institut, Copenhagen and Department of Clinical Immunology, Odense University Hospital). Medical charts and diagnostic work-up were retrospectively evaluated using the consensus criteria for NMDAR-AE and autoimmune limbic encephalitis (LE) (28). Thus, all patients included in this study (regardless of concomitant disease or underlying malignancies) fulfilled criteria for AE (except one patient with LGI1 IgG and faciobrachial dystonic seizures (FBDS) only) and displayed a clinical phenotype compatible with AE.

Antibody positivity was reported qualitatively as weakly (+), moderately (++) and strongly positive (+++) and based on a commercial cell-based assay (CBA, Euroimmun AG, Lübeck, Germany). Abnormal CSF was defined as pleocytosis (>5 cells/ μ L), elevated protein levels and/or presence of CSF specific oligoclonal bands (OCB). An abnormal MRI was defined as T2/FLAIR hyperintensities in NMDAR-AE and temporal lobe T2/FLAIR hyperintensities in LGI1-AE. The modified Rankin Scale (mRS) was used to determine neurological disability at last follow-up. A mRS score > 2 was considered a poor outcome and last follow-up was the last obtainable clinical neurological assessment. The CSF sample NfL was measured on, was obtained within one month of diagnosis, and prior to any treatment in all patients.

CSF Neurofilament Light Assay

CSF-NfL was measured blinded to clinical data by single molecule array technology (Simoa, HD-X Analyzer (Quanterix)), using a commercial NfL assay (Quanterix, Billerica, MA, USA). CSF samples used were routine samples from patient's initial hospital stay, stored at -80°C. Quality control was performed using two commercial controls provided by the manufacturer. In addition, an in-house CSF pool, from routine CSF samples, was used as internal control. Lower limit of detection and quantification was 0.038 pg/mL and 0.174 pg/mL, respectively. Age adjusted CSF-NfL values were determined according to a previous study and applied when

performing univariable analysis (29). Thus, elevated CSF-NfL levels were as follows: 18-40 years <560 pg/mL; 40-60 years <890 pg/mL and > 60 years <1850 pg/mL. These reference values are in line with what was found in >1300 healthy controls and >2700 patients with inflammatory CNS diseases in a large systematic review and meta-analysis (30).

Ethical Approval

Ethical approval was obtained by the Danish Medical Authorities (3-3013-3124/1) and the Danish Data Protection Agency, with waived requirement for participant consent.

Statistical Analysis

Statistical analysis was performed using GraphPad Prism (version 6.0.0 for macOS, GraphPad software, San Diego, California, USA) and stataCorp. 2021 (*Stata Statistical Software: Release 17*. College Station, TX: StataCorp LLC). NfL data were skewed and thus natural logarithmic transformed. Post-HSE and secondary NMDAR-AE forms were excluded from all statistical analyses (except **Figure 2C**), as concomitant disease and prior HSE might interfere with NfL values. Single factors potentially influencing outcome and NfL were analyzed by unpaired t-test. Multivariable analysis of outcome was performed on idiopathic/teratoma associated NMDAR-AE and LGII-AE patients combined to achieve sufficient sample size for analysis. Parameters analyzed for an effect on poor outcome (mRS>2) were logNfL, age and follow-up time (all continuous). Parameters analyzed for an effect on NfL (elevated or not) were age (continuous), pleocytosis (continuous) and abnormal MRI (binary). A p-value ≤ 0.05 was considered statistically significant.

RESULTS

Patient Demographics, Phenotypes and Ancillary Testing

A total of 53 AE patients (37 NMDAR-AE and 16 LGII-AE) were included in this study. Twenty-three (62%) NMDAR-AE patients were female with a median age of 27 years (**Table 1**). CSF pleocytosis was present in 33 (89%) and an abnormal brain MRI was found in 20 patients (54%) (**Table 1**). Seven (44%) LGII-AE patients were female and median age at onset was 63 years (**Table 1**). All LGII-AE patients except one displayed a classic LE; one had isolated FBDS. Only one LGII-AE patient had CSF pleocytosis and 10 (59%) displayed an abnormal brain MRI (**Table 1**). The median follow-up time was 23.8 months (725 days) and 43.9 months (1337 days) for NMDAR-AE and LGII-AE patients, respectively (**Table 1**). First NfL measurement was within 1 months of diagnosis and before treatment initiation in all patients. An overview of each patient is provided as supplementary material (**Supplementary Table**).

Subdivision of NMDAR-AE Patients Based on Underlying Etiology

All NMDAR-AE patients had a classic phenotype with a variety of changed behavior, memory impairment, psychiatric symptoms,

insomnia, reduced verbal output, decreased consciousness and dysautonomia. Five patients had underlying tumors (three benign teratomas, one primary CNS B-cell lymphoma and one small-cell lung cancer). Three patients had concomitant demyelinating diseases; two multiple sclerosis and one acute disseminated encephalomyelitis. The three patients with teratomas showed a similar phenotype and disease course to idiopathic NMDAR-AE patients, while patients with malignancies and demyelinating diseases showed a more extensive clinical syndrome than regular AE. NMDAR-AE patients were therefore subdivided into three groups: idiopathic/teratoma associated, secondary post-HSE and secondary other (concurrent malignancies or demyelinating disease) (**Table 1** and **Supplementary Table**). Secondary NMDAR-AE patients were more often male, middle-aged, more frequently had an abnormal MRI and had a worse outcome at final follow-up, when compared to idiopathic/teratoma associated NMDAR-AE and LGII-AE patients (**Table 1**).

CSF-NfL Levels at Diagnosis Are Higher in LGII-AE Than in Idiopathic/Teratoma Associated NMDAR-AE

The median CSF-NfL concentration at diagnosis in LGII-AE patients (n=16) was higher than in idiopathic/teratoma associated NMDAR-AE (n=27) (1178.5 pg/mL vs 284 pg/mL, $p<0.0001$) (**Table 1** and **Figure 1A**). Applying age adjusted cut-off values for CSF-NfL elevation revealed that only five idiopathic/teratoma associated NMDAR-AE patients (19%) had elevated CSF-NfL at diagnosis, compared to 50% of LGII-AE patients ($p=0.04$) (**Table 1** and **Figure 1B**).

CSF-NfL Kinetics Over Time

Twelve idiopathic/teratoma associated NMDAR-AE and nine LGII-AE patients had CSF available for NfL measurement during follow-up (**Figures 1C, D**). Median time between initial and follow-up CSF-NfL measurement was 2.96 months (range 0.99-45.34 months) in idiopathic/teratoma NMDAR-AE and 7.88 months (range 0.26-48.30 months) in LGII-AE patients. CSF-NfL levels declined in the majority of idiopathic/teratoma associated NMDAR-AE patients within 3 to 9 months after diagnosis, whereas CSF-NfL levels during follow-up in LGII-AE patients were more heterogenous (**Figures 1C, D**).

CSF-NfL Level at Diagnosis May Be Associated With a Poorer Outcome

A higher CSF-NfL level at diagnosis was associated with a higher mRS score at final follow-up in both idiopathic/teratoma associated NMDAR-AE and LGII-AE ($p=0.001$ and $p=0.04$) (**Figures 2A, B**). When applying age related cut offs for CSF-NfL and evaluating the entire AE cohort and the idiopathic/teratoma associated NMDAR-AE and LGII-AE combined, an association between elevated CSF-NfL at diagnosis and a poor outcome was found ($p=0.0009$ and $p=0.006$) (**Figures 2C, D**). Examining idiopathic/teratoma associated NMDAR- and LGII-AE patients separately, there was no significant association between CSF-NfL and poor outcome (**Figures 2E, F**). Nevertheless, patients with elevated NfL still scored higher

TABLE 1 | Demographics, diagnostic information and outcomes of the AE cohort.

AE (n = 53)	LGI1-AE (n = 16)	NMDAR-AE (n = 37)			
		All (n = 37)	Idiopathic/teratoma (n = 27)	Secondary post-HSE (n = 5)	Secondary Other (n = 5) ^a
Demographics					
Sex, female	7 (44%)	23 (62%)	20 (74%)	2 (40%)	1 (20%)
Age, median (range), years	63 (30-82)	27 (11-74)	21 (11-65)	65 (46-70)	56 (30-74)
Diagnostic information					
Fulfilling diagnostic criteria (NMDAR-AE)	–	35 definite/2 probable	27 definite	4 definite/1 probable	4 definite/1 probable
Limbic encephalitis (LGI1-AE)	15 LE/1 with FBDS only	–	–	–	–
CSF pleocytosis	1 (7%) ^b	33 (89%)	25 (93%)	5 (100%)	3 (60%)
Abnormal MRI during acute phase	10 (59%)	20 (54%)	12 (44%)	3 (60%)	5 (100%)
CSF NfL-level at treatment initiation, median (range)	1178.5 pg/mL (395-4722)	429 pg/mL (34-28048)	284 pg/mL (34-1812)	12409 pg/mL (4898-22458)	2285 pg/mL (1969-28048)
Elevated CSF NfL at treatment initiation	8 (50%)	15 (41%)	5 (19%)	5 (100%)	5 (100%)
Time from first symptom to diagnosis, days, median (range)	113.5 (31-440)	–	38 (5-176) ^c	–	–
Treatment					
Time from first symptom to treatment, days, median (range)	111 (10-440)	–	28.5 (4-170)	–	–
Outcome					
Follow-up time, months, median (range)	43.9 (1.15-86.31) ^c	23.8 (0.16-78.32) ^d	26 (0.16-78.32) ^d	22.8 (10.81-40.97)	17.3 (6.73-62.88)
mRS at follow-up, mean (range 1-6)	1,62	1,92	1,26*	3	4,4

^aThis group consisted of: one patient with SCLC and LE with anti-hu abs, one patient with PCNSL (B-cell), two patients with MS, one patient with ADEM.

^bOne patient NA.

^cTwo patients NA.

^dThree patients NA.

AE, Autoimmune Encephalitis; LGI1, Leucine-rich Glioma-Inactivated 1; NMDAR, N-methyl-D-aspartate receptor; Post-HSE, Post Herpes Simplex Virus type 1 encephalitis; CSF, cerebrospinal fluid; MRI, Magnetic Resonance Imaging; NfL, Neurofilament Light Chain; mRS, Modified Rankin scale; SCLC, Small-cell lung cancer; LE, Limbic encephalitis; PCNSL, Primary CNS lymphoma; MS, multiple sclerosis; ADEM, Acute disseminated encephalomyelitis; NA, Not Available.

mRS at follow-up in both subgroups. Thus, patients with an elevated CSF-NfL at diagnosis might be at greater risk of a poorer outcome. Distribution of outcome in each group of the entire cohort can be found in **Supplementary Figure**.

CSF-NfL Levels Seem to Distinguish Idiopathic/Teratoma Associated NMDAR-AE From NMDAR-AE Secondary to Other Diseases

CSF-NfL analysis showed different median concentrations at diagnosis amongst the NMDAR-AE subgroups (**Table 1** and **Figure 3**). Idiopathic/teratoma associated NMDAR-AE patients had lower CSF-NfL levels compared to both post-HSE and secondary NMDAR-AE patients (median 284 vs 12409 pg/mL ($p < 0.0001$) and 2285 pg/mL ($p < 0.0001$)) (**Table 1** and **Figure 3**). All secondary NMDAR-AE patients (both post HSE and with concomitant diseases) had elevated NfL levels at diagnosis.

CSF-NfL Levels and Antibody Positivity in AE

All NMDAR-AE and 14/15 (one sample was unavailable) of the LGI1-AE patients had autoantibodies present in the CSF at

diagnosis (**Supplementary Table**). In idiopathic/teratoma associated NMDAR-AE patients, increasing intensity in antibody positivity in serum associated with higher CSF-NfL levels (- vs +, $p = 0.03$ and - vs ++, $p = 0.03$) (data not shown). Otherwise, no associations were seen in either idiopathic/teratoma associated NMDAR-AE in CSF or in LGI1-AE in serum or CSF.

Clinical Phenotype, Paraclinical Findings and CSF-NfL Levels

Abnormal involuntary movements and abnormal brain MRI were associated with higher CSF-NfL levels in idiopathic/teratoma associated NMDAR-AE patients ($p = 0.002$ and $p = 0.009$, respectively) (**Figure 4A, C**). All patients with elevated CSF-NfL levels presented abnormal movements ($p = 0.05$) (**Figure 4B**). In LGI1-AE, CSF-NfL levels were higher in patients with an abnormal CSF ($p = 0.003$) and hyponatremia ($p = 0.005$) (**Figure 5A, C**). Patients with normal CSF findings always had normal NfL levels (**Figure 5B**) and all patients with elevated CSF-NfL levels presented hyponatremia ($p = 0.03$) (**Figure 5D**). No association between CSF-NfL levels and seizures, abnormal CSF or intensive care unit (ICU) admission

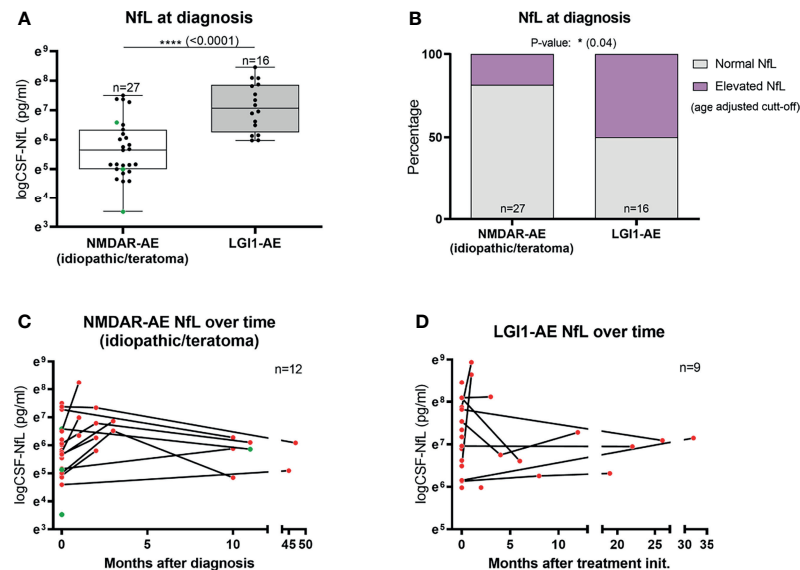


FIGURE 1 | CSF-Neurofilament light chain (NfL) levels at diagnosis and follow-up. CSF-NfL levels at diagnosis were higher in LGI1 patients than in patients with idiopathic/teratoma associated NMDAR-AE (**A**). In addition, LGI1-AE patients more often presented elevated NfL levels at diagnosis, when using age-adjusted cut-off levels of CSF-NfL (**B**). Twelve NMDAR-AE (out of 27) (**C**) and nine LGI1-AE patients (out of 16) (**D**) had follow-up NfL measurements available. Idiopathic/teratoma associated NMDAR-AE patients CSF-NfL levels decreased over time in majority of cases (**C**). In contrast, LGI1-AE patients CSF-NfL levels were more heterogenous during follow-up (**D**). Idiopathic/teratoma associated NMDAR-AE patients with teratomas are shown as green datapoints (**A, C**). *p value < 0.05, ****p value < 0.0001.

in NMDAR-AE patients, or with abnormal movements or MRI findings in LGI1-AE patients was found (data not shown).

Treatment Regimen and Follow-Up CSF-NfL Measurements

Of the 12 NMDAR-AE patients with follow-up CSF-NfL measurements, eight received first-line treatment and four required additional second-line treatment (**Figure 6A**). In the nine LGI1-AE patients, eight received first-line and only one second-line treatment (**Figure 6B**). Plasma exchange (PLEX) or a combination of PLEX and intravenous immunoglobulin (IVIg) seemed to reduce NfL levels more than IVIg alone (**Figure 6C**). But due to small sample size and unequal follow-up times these results must be interpreted with caution.

Multivariable Analysis of Factors Influencing Poor Outcome and Elevated NfL at Diagnosis

Testing some of the single variables investigated above in a multivariable logistic regression model (parameters included: age, follow-up time and CSF-NfL level at diagnosis) similarly revealed that higher CSF-NfL at diagnosis was associated with a poorer outcome in idiopathic/teratoma associated NMDAR-AE and LGI1-AE patients combined (OR 11.97, 95% CI 1.22-117.01, $p=0.033$) (**Table 2**). When evaluating factors influencing NfL elevation (parameters included: age, pleocytosis and abnormal MRI), abnormal MRI was associated with an elevated NfL level at diagnosis (OR 5.4, 95% CI 1.05-27.88, $p=0.044$).

DISCUSSION

We examined the relation between CSF-NfL levels and neuronal surface autoantibody titers, clinical presentation, ancillary findings and long-term outcomes in a national AE cohort, including 74 CSF samples from 53 patients. We found differences in CSF-NfL levels not only between NMDAR- and LGI-AE patients, but also between different NMDAR-AE etiologies. NfL levels at diagnosis appeared to be associated with long-term outcomes in both our univariable and multivariable analysis. This is in line with not only previous findings in other inflammatory diseases, but also a smaller study in AE (22, 24, 31). Five previous smaller studies on NfL as a biomarker in AE have been published (31–36).

We evaluated NMDAR-AE patients based on underlying etiology and found that gender distribution, median age and outcomes were widely different between idiopathic NMDAR-AE or NMDAR-AE secondary to HSE or concomitant with malignancies or demyelinating disease. Teratoma patients were grouped with idiopathic NMDAR-AE, as they turned out to present a similar clinical phenotype and disease course, although a paraneoplastic phenomenon. In addition, our study revealed that CSF-NfL levels were lower at diagnosis in idiopathic NMDAR-AE (teratomas included) when compared to secondary NMDAR-AE forms.

Higher CSF-NfL values in NMDAR-AE patients reported by previous studies may reflect combined evaluation of all NMDAR-AE etiologies (31, 32, 34). The CSF-NfL variations seen amongst different NMDAR-AE etiologies in this study,

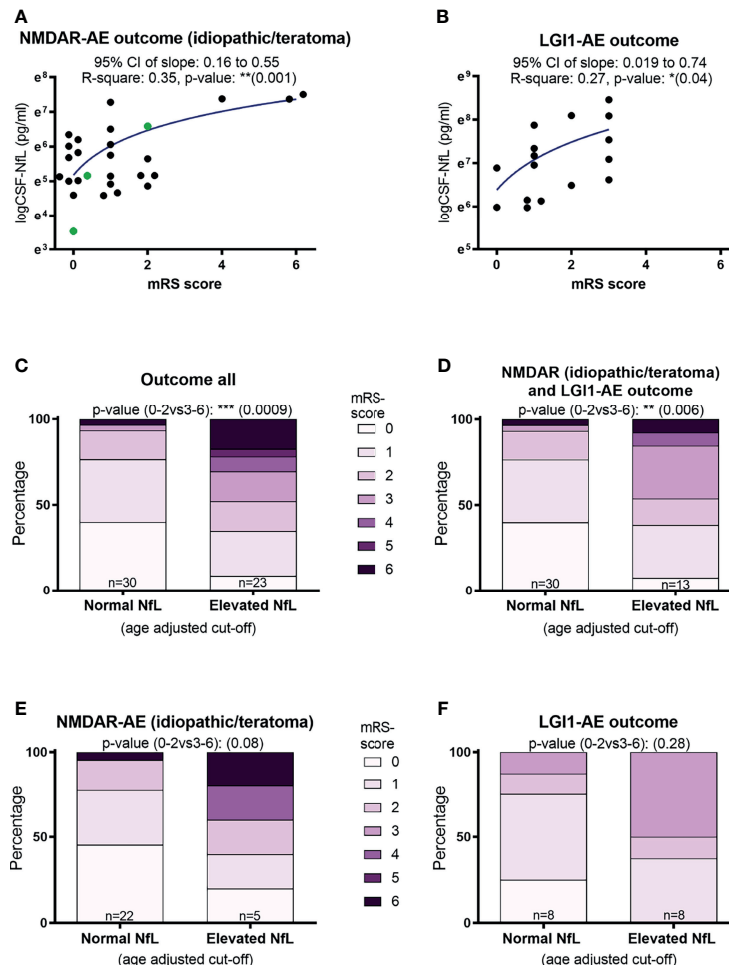


FIGURE 2 | CSF-Neurofilament light chain (NfL) levels at diagnosis and patient outcomes. Higher CSF-NfL values at diagnosis was associated with worse outcome at last follow-up in both NMDAR and LGI1-AE patients (**A, B**). Applying age-adjusted cut-off values for elevated CSF-NfL, showed that elevated NfL at diagnosis was associated with a poorer outcome in both the complete cohort tested and in idiopathic/teratoma associated NMDAR- and LGI1-AE patients combined (**C, D**). When further dividing the cohort into idiopathic/teratoma associated NMDAR-AE patients (**E**) and LGI1-AE patients alone (**F**), patients with elevated NfL at diagnosis still showed a poorer outcome, but no longer significant. NMDAR-AE patients with teratomas are shown as green datapoints (**A**). *p value < 0.05, **p value < 0.01, ***p value < 0.001.

may suggest that further investigations towards underlying concomitant diseases such as malignant or demyelinating conditions might be considered in cases with high NfL levels. This does, however, not apply for teratoma-induced NMDAR-AE as only one of three teratoma patients presented slightly elevated CSF-NfL at diagnosis.

A recent study reported lower CSF-NfL values in patients with ovarian teratoma (36). In line with this, the two of our three teratoma patients had NfL levels below the median of the remaining idiopathic NMDAR-AE cohort. Teratoma patients have been shown to have a noticeably peripheral generation of autoantibodies, and have often been reported with higher NMDAR IgG levels in serum than CSF. This pronounced peripheral antibody production, might explain lower CSF-NfL levels in teratoma patients. Nevertheless, our three teratoma patients all presented more strongly positive assay readouts in

CSF than in serum (+++ vs +/-), not completely compiling with previous results published (37). Why our patients differ remains unknown.

Our study suggests that idiopathic and teratoma induced NMDAR-AE patients have lower CSF-NfL levels than patients with LGI1-AE at disease onset. This is in accordance with two previous studies and could be expected due to age differences between the diseases (32, 33). Nevertheless, the difference remained solid when adjusting CSF-NfL levels to age adjusted cut-off values when performing univariable analysis and when we corrected for age in multivariable analysis. In contrast, a recent study reported higher CSF-NfL levels in NMDAR-AE patients (36). However, that study investigated only 11 NMDAR and 10 LGI1/CASPR2-AE patients, did not consider other underlying disease etiologies and used an Enzyme-Linked Immunosorbent Assay (ELISA) based test. Ideally, the factors

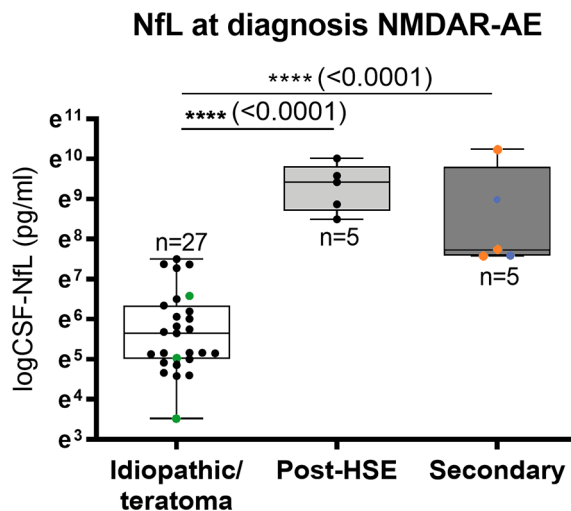


FIGURE 3 | CSF-Neurofilament light chain (NfL) levels in NMDAR-AE subgroups. Patients with idiopathic/teratoma associated NMDAR-AE had significantly lower CSF-NfL levels at diagnosis than patients with secondary NMDAR-AE due to post-Herpes Simplex Virus 1 Encephalitis (Post-HSE) or underlying demyelinating conditions or malignancies (secondary). NMDAR-AE patients with teratomas are shown as green datapoints, demyelinating as red and malignancies as blue datapoints. ****p value < 0.0001.

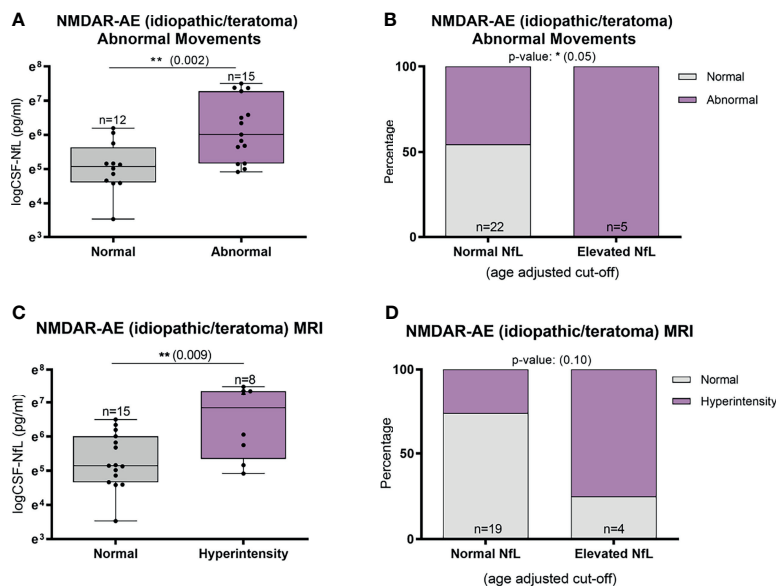


FIGURE 4 | CSF-Neurofilament light chain (NfL) levels in relation to abnormal involuntary movements and MRI findings in idiopathic/teratoma associated NMDAR-AE patients. Patients with NMDAR-AE (idiopathic or teratoma) and abnormal movements had higher NfL levels at diagnosis (A), and all patients with elevated NfL levels presented abnormal movements (B). MRI hyperintensities on T2/FLAIR sequences were associated with higher NfL levels at diagnosis in idiopathic/teratoma associated NMDAR-AE (C), and majority of patients with MRI changes had elevated CSF-NfL levels at diagnosis (D). *p value < 0.05, **p value < 0.01.

responsible for the difference in CSF-NfL levels between NMDAR- and LGI1-AE should be investigated by multivariable analysis, but this was not possible due to small sample size in previous and this present study.

It has been shown that intrathecal LGI1-IgG synthesis correlates with worse outcome, suggestive of greater neuronal

injury in these patients (38). LGI1-AE has an insidious onset, with an often milder disease course than NMDAR-AE. Nevertheless, LGI1-AE patients more often present MRI changes and temporal lobe atrophy at follow-up, suggesting a more pronounced neurodegenerative pathophysiology. MRI findings such as white matter changes, likely result in greater

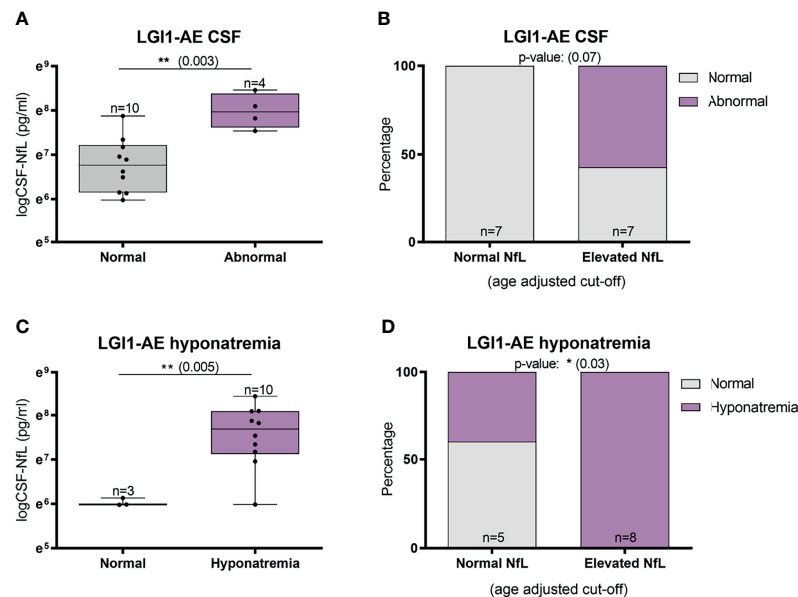


FIGURE 5 | CSF-Neurofilament light chain (NfL) levels and abnormal CSF findings and hyponatremia in LGI1-AE patients. In LGI1-AE patients, an abnormal CSF finding (pleocytosis, elevated protein or oligoclonal bands) was associated with higher NfL levels at diagnosis (**A**) and patients with normal NfL levels at diagnosis always had normal CSF findings (**B**). In addition, higher NfL levels at diagnosis was associated with the presence of hyponatremia (**C**), and all patients with elevated NfL levels presented hyponatremia during the acute phase (**D**). *p value < 0.05, **p value < 0.01.

neuroaxonal injury, and may consequently contribute to the higher CSF-NfL levels found in LGI1-AE patients. In line with this, our NMDAR-AE patients with abnormal MRI findings showed higher CSF-NfL levels than patients with a normal MRI. NMDAR-AE patients with MRI abnormalities and abnormal movements, may represent a fraction of patients with greater neuronal damage, and thus higher CSF-NfL values compared to patients without these features. Logistic regression, even though restricted by sample size, also suggested abnormal MRI as a factor predicting elevated CSF-NfL at diagnosis.

Follow-up measurements in our AE cohort indicated steadily decreasing levels in NMDAR-AE and a more heterogeneous pattern in LGI1-AE patients. This might reflect a subtle, but ongoing, neurodegeneration in LGI1-AE patients, even during recovery. A recent study reported persisting long-term cognitive impairment in LGI1-AE, but whether these are temporarily progressing is unknown (39). The one patient in our study who had LGI1-AE without cognitive impairment, had the lowest CSF-NfL concentration at diagnosis, speculating that lower CSF-NfL levels might reflect lower neurodegeneration and thus no cognitive decline.

LGI1-AE patients with abnormal CSF findings and with hyponatremia had the highest CSF-NfL concentrations. This may reflect, that patients with CSF abnormalities (normally infrequent in LGI1-AE) are more severely affected by inflammation. The mechanisms behind the hyponatremia in LGI1-AE is speculated to be caused by hypothalamic neuronal impairment or LGI1 channel dysregulation in the renal epithelium. Higher CSF-NfL levels in patients with hyponatremia may reflect

a more widespread disease, affecting the brain more globally and with a greater systemic affection compared to patients without hyponatremia.

We found no connection between elevated CSF-NfL levels and seizure activity or ICU admission. To our knowledge, scarce publications on seizures/epilepsy and serum NfL levels exist, that show none or sparse temporal elevation of NfL levels after seizure activity (40).

When comparing studies on NfL, the method used for evaluation is of essence. We used Simoa technology which has a higher sensitivity than ELISA and Electrochemiluminescence assays (41). Thus, Simoa has been reported to be 126 times more sensitive than ELISA, with an analytical sensitivity of 0.62 pg/mL compared to up to 78 pg/mL in ELISA (41). In addition, the test material has an impact on assay performance, as CSF displays higher sensitivity and specificity than both plasma and serum (23, 27, 42). Therefore, comparability of NfL concentrations between studies using different assay platforms and different test material is limited.

Reference values and clinically validated cut-off values (decision limits) for NfL levels are still lacking. Further studies on paired CSF and serum samples, including healthy controls, would be beneficial to enlighten NfL's utility as a disease monitoring entity.

The strength of our study is the national NMDAR- and LGI1-AE cohort database used to provide accurate clinical and paraclinical information, coupled with a long follow-up time and sensitive CSF-NfL testing on Simoa. This allowed us to test a substantial number of patients.

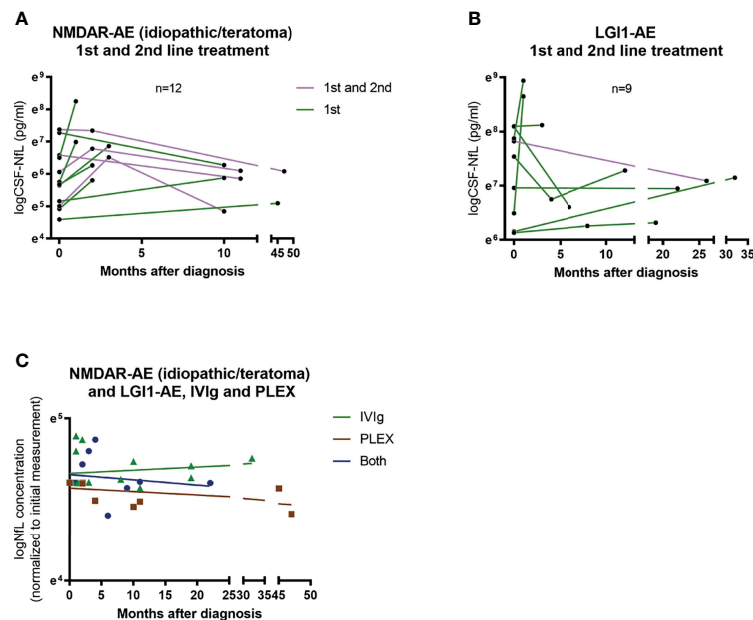


FIGURE 6 | CSF-NfL levels and treatment regimens. Overview of patients (idiopathic/teratoma associated NMDAR-AE $n=12$ and LGI1-AE $n=9$) with available follow-up CSF-NfL measurements and if they received first or second line therapy (**A**, **B**). A comparison between follow-up CSF-NfL values and different first line treatment strategies showed a tendency towards lower follow-up CSF-NfL values in patients treated with PLEX or a combination of PLEX/IVig (**C**). Patients only receiving IVig are shown as green ▲. Patients only receiving PLEX are shown as brown ■. And patients receiving both as blue ●.

TABLE 2 | Multivariable analysis examining predictors for poor outcome (mRS >2).

y (poor outcome)	Odds ratio	Std. error	p-value	[95% conf. interval]
logNfL	11.97205	13.92513	0.033	.224911 - 117.0125
Age	1.040413	.0364072	0.258	.9714481 - 1.114274
Follow-up time	.9999705	.0006332	0.963	.9987301 - 1.001212

Number of observations = 37 (idiopathic/teratoma associated NMDAR-AE and LGI1-AE patients).

Limitations include the small sample size and the retrospective approach, which constrained statistical analysis. However, our main aim was to evaluate CSF-NfL levels at time of diagnosis and relate to long-term outcomes. Performing exploratory univariable analysis, as we do in this study, composes a risk of overinterpretation and overlooking potential confounders. To accommodate this, we performed multivariable testing. However, due to the sample size, the model could only fit three predictors, and unfortunately did not allow to adjust for antibody subtype (NMDAR or LGI1) or treatment regimen (secondline), which are two important variables (4, 43, 44). Thus, our conclusions should be interpreted with caution.

Using the mRS to evaluate long-term outcome of AE patients comprises a restriction, as recent studies have shown that AE patients often suffer from cognitive impairment even years after treatment (45, 46). Consequently, other outcome-evaluating tools with greater focus on cognitive function and quality of life are warranted.

In conclusion, CSF-NfL levels at diagnosis were higher in LGI1-AE patients than in idiopathic and teratoma associated NMDAR-AE and our data indicate that high CSF-NfL may relate to worse

long-term outcome. Furthermore, NfL levels might help distinguish idiopathic/teratoma associated NMDAR-AE from secondary NMDAR-AE forms. Additional studies on larger cohorts, with standardized methods and cut-off values are warranted to further validate CSF-NfL as a potential biomarker in AE.

DATA AVAILABILITY STATEMENT

The raw data supporting the conclusions of this article will be made available by the authors, without undue reservation.

ETHICS STATEMENT

The studies involving human participants were reviewed and approved by Danish Medical Authorities (3-3013-3214/1), the Ethical Committee of the Region of Southern Denmark (nr. S-20180026) and the Danish Data Protection Agency. Written informed consent from the participants' legal guardian/next of

kin was not required to participate in this study in accordance with the national legislation and the institutional requirements.

AUTHOR CONTRIBUTIONS

MN and MB, drafting/revision of the manuscript for content, including medical writing for content, major role in the acquisition of data, study concept or design, and analysis or interpretation of data. MR, JM, and DO, drafting/revision of the manuscript for content, including medical writing for content, and analysis or interpretation of data. UH, major role in analysis and interpretation of data. AN and ML, drafting/revision of the manuscript for content, including medical writing for content, and major role in the acquisition of data. ZI, drafting/revision of the manuscript for content, including medical writing for content, study concept or design, and analysis or interpretation of data. All authors contributed to the article and approved the submitted version.

REFERENCES

- Irani SR, Alexander S, Waters P, Kleopa KA, Pettingill P, Zuliani L, et al. Antibodies to Kv1 Potassium Channel-Complex Proteins Leucine-Rich, Glioma Inactivated 1 Protein and Contactin-Associated Protein-2 in Limbic Encephalitis, Morvan's Syndrome and Acquired Neuromyotonia. *Brain* (2010) 133(9):2734–48. doi: 10.1093/brain/awq213
- Dalmau J, Tuzun E, Wu HY, Masjuan J, Rossi JE, Voloschin A, et al. Paraneoplastic Anti-N-Methyl-D-Aspartate Receptor Encephalitis Associated With Ovarian Teratoma. *Ann Neurol* (2007) 61(1):25–36. doi: 10.1002/ana.21050
- Dalmau J, Graus F. Antibody-Mediated Encephalitis. *N Engl J Med* (2018) 378(9):840–51. doi: 10.1056/NEJMra1708712
- Titulaer MJ, McCracken L, Gabilondo I, Armangue T, Glaser C, Iizuka T, et al. Treatment and Prognostic Factors for Long-Term Outcome in Patients With Anti-NMDA Receptor Encephalitis: An Observational Cohort Study. *Lancet Neurol* (2013) 12(2):157–65. doi: 10.1016/S1474-4422(12)70310-1
- van Sonderen A, Thijs RD, Coenders EC, Jiskoot LC, Sanchez E, de Bruijn MA, et al. Anti-LGI1 Encephalitis: Clinical Syndrome and Long-Term Follow-Up. *Neurology* (2016) 87(14):1449–56. doi: 10.1212/WNL.0000000000003173
- Irani SR, Bera K, Waters P, Zuliani L, Maxwell S, Zandi MS, et al. N-Methyl-D-Aspartate Antibody Encephalitis: Temporal Progression of Clinical and Paraclinical Observations in a Predominantly Non-Paraneoplastic Disorder of Both Sexes. *Brain* (2010) 133(Pt 6):1655–67. doi: 10.1093/brain/awq113
- Irani SR, Vincent A. The Expanding Spectrum of Clinically-Distinctive, Immunotherapy-Responsive Autoimmune Encephalopathies. *Arg Neuropsychiatr* (2012) 70(4):300–4. doi: 10.1590/S0004-282X2012000400015
- Arino H, Armangue T, Petit-Pedrol M, Sabater L, Martinez-Hernandez E, Hara M, et al. Anti-LGI1-Associated Cognitive Impairment: Presentation and Long-Term Outcome. *Neurology* (2016) 87(8):759–65. doi: 10.1212/WNL.0000000000003009
- Tuzun E, Zhou L, Baehring JM, Bannykh S, Rosenfeld MR, Dalmau J. Evidence for Antibody-Mediated Pathogenesis in Anti-NMDAR Encephalitis Associated With Ovarian Teratoma. *Acta Neuropathol* (2009) 118(6):737–43. doi: 10.1007/s00401-009-0582-4
- Martinez-Hernandez E, Horvath J, Shiloh-Malawsky Y, Sangha N, Martinez-Lage M, Dalmau J. Analysis of Complement and Plasma Cells in the Brain of Patients With Anti-NMDAR Encephalitis. *Neurology* (2011) 77(6):589–93. doi: 10.1212/WNL.0b013e318228c136
- Armangue T, Spatola M, Vlasea A, Mattozzi S, Carceles-Cordon M, Martinez-Heras E, et al. Frequency, Symptoms, Risk Factors, and Outcomes of Autoimmune Encephalitis After Herpes Simplex Encephalitis: A Prospective Observational Study and Retrospective Analysis. *Lancet Neurol* (2018) 17(9):760–72. doi: 10.1016/S1474-4422(18)30244-8
- Martinez-Hernandez E, Guasp M, Garcia-Serra A, Maudes E, Ariño H, Sepulveda M, et al. Clinical Significance of Anti-NMDAR Concurrent With Glial or Neuronal Surface Antibodies. *Neurology* (2020) 94(22):e2302–10. doi: 10.1212/WNL.00000000000009239
- Titulaer MJ, Hofberger R, Iizuka T, Leypoldt F, McCracken L, Cellucci T, et al. Overlapping Demyelinating Syndromes and Anti-N-Methyl-D-Aspartate Receptor Encephalitis. *Ann Neurol* (2014) 75(3):411–28. doi: 10.1002/ana.24117
- Leypoldt F, Höftberger R, Titulaer MJ, Armangue T, Gresa-Arribas N, Jahn H, et al. Investigations on CXCL13 in Anti-N-Methyl-D-Aspartate Receptor Encephalitis: A Potential Biomarker of Treatment Response. *JAMA Neurol* (2015) 72(2):180–6. doi: 10.1001/jamaneurol.2014.2956
- Levrant M, Bourg V, Capet N, Delourme A, Honnorat J, Thomas P, et al. Cerebrospinal Fluid IL-17a Could Predict Acute Disease Severity in Non-NMDA-Receptor Autoimmune Encephalitis. *Front Immunol* (2021) 12(1750). doi: 10.3389/fimmu.2021.673021
- Zeng C, Chen L, Chen B, Cai Y, Li P, Yan L, et al. Th17 Cells Were Recruited and Accumulated in the Cerebrospinal Fluid and Correlated With the Poor Prognosis of Anti-NMDAR Encephalitis. *Acta Biochim Biophys Sin* (2018) 50(12):1266–73. doi: 10.1093/abbs/gmy137
- Ulusoy C, Tüzün E, Kürtüncü M, Türkoğlu R, Akman-Demir G, Eraksoy M. Comparison of the Cytokine Profiles of Patients With Neuronal-Antibody-Associated Central Nervous System Disorders. *Int J Neurosci* (2012) 122(6):284–9. doi: 10.3109/00207454.2011.648762
- Byun JI, Lee ST, Moon J, Jung KH, Sunwoo JS, Lim JA, et al. Distinct Intrathecal Interleukin-17/Interleukin-6 Activation in Anti-N-Methyl-D-Aspartate Receptor Encephalitis. *J Neuroimmunol* (2016) 297:141–7. doi: 10.1016/j.jneuroim.2016.05.023
- Gresa-Arribas N, Titulaer MJ, Torrents A, Aguilar E, McCracken L, Leypoldt F, et al. Antibody Titres at Diagnosis and During Follow-Up of Anti-NMDA Receptor Encephalitis: A Retrospective Study. *Lancet Neurol* (2014) 13(2):167–77. doi: 10.1016/S1474-4422(13)70282-5
- Guasp M, Modena Y, Armangue T, Dalmau J, Graus F. Clinical Features of Seronegative, But CSF Antibody-Positive, Anti-NMDA Receptor Encephalitis. *Neurol Neuroimmunol Neuroinflamm* (2020) 7(2):e659. doi: 10.1212/NXI.0000000000000659
- Alexopoulos H, Kosmidis ML, Dalmau J, Dalakas MC. Paraneoplastic Anti-NMDAR Encephalitis: Long Term Follow-Up Reveals Persistent Serum Antibodies. *J Neurol* (2011) 258(8):1568–70. doi: 10.1007/s00415-011-5982-4
- Modvig S, Degn M, Roed H, Sørensen TL, Larsson HB, Langkilde AR, et al. Cerebrospinal Fluid Levels of Chitinase 3-Like 1 and Neurofilament Light

FUNDING

MN received funding from Odense University Hospital and the University of Southern Denmark.

ACKNOWLEDGMENTS

This research has been conducted using the Danish National Biobank resource, supported by the Novo Nordisk Foundation.

SUPPLEMENTARY MATERIAL

The Supplementary Material for this article can be found online at: <https://www.frontiersin.org/articles/10.3389/fimmu.2021.719432/full#supplementary-material>

- Chain Predict Multiple Sclerosis Development and Disability After Optic Neuritis. *Mult Scler* (2015) 21(14):1761–70. doi: 10.1177/1352458515574148
23. Kuhle J, Kropshofer H, Haering DA, Kundu U, Meinert R, Barro C, et al. Blood Neurofilament Light Chain as a Biomarker of MS Disease Activity and Treatment Response. *Neurology* (2019) 92(10):e1007–15. doi: 10.1212/WNL.00000000000007032
 24. Mariotto S, Ferrari S, Gastaldi M, Franciotta D, Sechi E, Capra R, et al. Neurofilament Light Chain Serum Levels Reflect Disease Severity in MOG-Ab Associated Disorders. *J Neurol Neurosurg Psychiatry* (2019) 90(11):1293–6. doi: 10.1136/jnnp-2018-320287
 25. Sejbaek T, Mendoza JP, Penner N, Madsen JS, Olsen DA, Illes Z. Comparison of Neurofilament Light Chain Results Between Two Independent Facilities. *BMJ Neurol Open* (2020) 2(2):e000063. doi: 10.1136/bmjno-2020-000063
 26. Byg KE, Nielsen HH, Sejbaek T, Madsen JS, Olsen DA, Nguyen N, et al. Elevated Neurofilament Light Chain in Cerebrospinal Fluid and Plasma Reflect Inflammatory MRI Activity in Neurosarcoidosis. *Brain Sci* (2021) 11(2):238. doi: 10.3390/brainsci11020238
 27. Sejbaek T, Nielsen HH, Penner N, Plavina T, Mendoza JP, Martin NA, et al. Dimethyl Fumarate Decreases Neurofilament Light Chain in CSF and Blood of Treatment Naïve Relapsing MS Patients. *J Neurol Neurosurg Psychiatry* (2019) 90(12):1324–30. doi: 10.1136/jnnp-2019-321321
 28. Graus F, Titulaer MJ, Balu R, Benseler S, Bien CG, Cellucci T, et al. A Clinical Approach to Diagnosis of Autoimmune Encephalitis. *Lancet Neurol* (2016) 15(4):391–404. doi: 10.1016/S1474-4422(15)00401-9
 29. Vågberg M, Norgren N, Dring A, Lindqvist T, Birgander R, Zetterberg H, et al. Levels and Age Dependency of Neurofilament Light and Glial Fibrillary Acidic Protein in Healthy Individuals and Their Relation to the Brain Parenchymal Fraction. *PLoS One* (2015) 10(8):e0135886. doi: 10.1371/journal.pone.0135886
 30. Bridel C, van Wieringen WN, Zetterberg H, Tijms BM, Teunissen CE, Alvarez-Cermeño JC, et al. Diagnostic Value of Cerebrospinal Fluid Neurofilament Light Protein in Neurology: A Systematic Review and Meta-Analysis. *JAMA Neurol* (2019) 76(9):1035–48. doi: 10.1001/jamaneurol.2019.1534
 31. Macher S, Zrzavy T, Hofberger R, Altmann P, Pataria E, Zimprich F, et al. Longitudinal Measurement of Cerebrospinal Fluid Neurofilament Light in Anti-N-Methyl-D-Aspartate Receptor Encephalitis. *Eur J Neurol* (2020) 28(4):1401–5. doi: 10.1111/ene.14631
 32. Körtvelyessy P, Prüss H, Thurner L, Maetzler W, Vittore-Welliong D, Schultze-Amberger J, et al. Biomarkers of Neurodegeneration in Autoimmune-Mediated Encephalitis. *Front Neurol* (2018) 9:668. doi: 10.3389/fneur.2018.00668
 33. Mariotto S, Gajofatto A, Zuliani L, Zoccarato M, Gastaldi M, Franciotta D, et al. Serum and CSF Neurofilament Light Chain Levels in Antibody-Mediated Encephalitis. *J Neurol* (2019) 266(7):1643–8. doi: 10.1007/s00415-019-09306-z
 34. Li J, Gu Y, An H, Zhou Z, Zheng D, Wang Z, et al. Cerebrospinal Fluid Light and Heavy Neurofilament Level Increased in Anti-N-Methyl-D-Aspartate Receptor Encephalitis. *Brain Behav* (2019) 9(8):e01354. doi: 10.1002/brb3.1354
 35. Probasco JC, Solnes L, Nalluri A, Cohen J, Jones KM, Zan E, et al. Abnormal Brain Metabolism on FDG-PET/CT Is a Common Early Finding in Autoimmune Encephalitis. *Neurol Neuroimmunol Neuroinflamm* (2017) 4(4):e352. doi: 10.1212/NXI.0000000000000352
 36. Day GS, Yarbrough MY, Körtvelyessy PM, Prüss H, Bucelli RC, Fritzler MJ, et al. Prospective Quantification of CSF Biomarkers in Antibody-Mediated Encephalitis. *Neurology* (2021) 96(20):e2546–57. doi: 10.1212/WNL.0000000000011937
 37. Makuch M, Wilson R, Al-Diwani A, Varley J, Kienzler AK, Taylor J, et al. N-Methyl-D-Aspartate Receptor Antibody Production From Germinal Center Reactions: Therapeutic Implications. *Ann Neurol* (2018) 83(3):553–61. doi: 10.1002/ana.25173
 38. Gadoth A, Zekeridou A, Klein CJ, Thoreson CJ, Majed M, Dubey D, et al. Elevated LGI1-IgG CSF Index Predicts Worse Neurological Outcome. *Ann Clin Trans Neurol* (2018) 5(5):646–50. doi: 10.1002/acn3.561
 39. Binks SNM, Veldsman M, Easton A, Leite MI, Okai D, Husain M, et al. Residual Fatigue and Cognitive Deficits in Patients After Leucine-Rich Glioma-Inactivated 1 Antibody Encephalitis. *JAMA Neurol* (2021) 78(5):617–9. doi: 10.1001/jamaneurol.2021.0477
 40. Nass RD, Akgün K, Elger C, Reichmann H, Wagner M, Surges R, et al. Serum Biomarkers of Cerebral Cellular Stress After Self-Limiting Tonic Clonic Seizures: An Exploratory Study. *Seizure* (2021) 85:1–5. doi: 10.1016/j.seizure.2020.12.009
 41. Kuhle J, Barro C, Andreasson U, Derfuss T, Lindberg R, Sandelius Å, et al. Comparison of Three Analytical Platforms for Quantification of the Neurofilament Light Chain in Blood Samples: ELISA, Electrochemiluminescence Immunoassay and Simoa. *Clin Chem Lab Med* (2016) 54(10):1655–61. doi: 10.1515/cclm-2015-1195
 42. Wilke C, Pujol-Calderon F, Barro C, Stransky E, Blennow K, Michalak Z, et al. Correlations Between Serum and CSF Pnfh Levels in ALS, FTD and Controls: A Comparison of Three Analytical Approaches. *Clin Chem Lab Med* (2019) 57(10):1556–64. doi: 10.1515/cclm-2019-0015
 43. Dubey D, Britton J, McKeon A, Gadoth A, Zekeridou A, Lopez Chiriboga SA, et al. Randomized Placebo-Controlled Trial of Intravenous Immunoglobulin in Autoimmune LGI1/CASPR2 Epilepsy. *Ann Neurol* (2020) 87(2):313–23. doi: 10.1002/ana.25655
 44. Thompson J, Bi M, Murchison AG, Makuch M, Bien CG, Chu K, et al. The Importance of Early Immunotherapy in Patients With Faciobrachial Dystonic Seizures. *Brain* (2018) 141(2):348–56. doi: 10.1093/brain/awx323
 45. McKeon GL, Robinson GA, Ryan AE, Blum S, Gillis D, Finke C, et al. Cognitive Outcomes Following Anti-N-Methyl-D-Aspartate Receptor Encephalitis: A Systematic Review. *J Clin Exp Neuropsychol* (2018) 40(3):234–52. doi: 10.1080/13803395.2017.1329408
 46. Heine J, Kopp UA, Klag J, Ploner CJ, Prüss H, Finke C. Long-Term Cognitive Outcome in Anti-NMDA Receptor Encephalitis. *Ann Neurol* (2021) 90(6):949–61. doi: 10.1002/ana.26241

Conflict of Interest: The authors declare that the research was conducted in the absence of any commercial or financial relationships that could be construed as a potential conflict of interest.

Publisher's Note: All claims expressed in this article are solely those of the authors and do not necessarily represent those of their affiliated organizations, or those of the publisher, the editors and the reviewers. Any product that may be evaluated in this article, or claim that may be made by its manufacturer, is not guaranteed or endorsed by the publisher.

Copyright © 2021 Nissen, Ryding, Nilsson, Madsen, Olsen, Halekoh, Lydolph, Illes and Blaabjerg. This is an open-access article distributed under the terms of the Creative Commons Attribution License (CC BY). The use, distribution or reproduction in other forums is permitted, provided the original author(s) and the copyright owner(s) are credited and that the original publication in this journal is cited, in accordance with accepted academic practice. No use, distribution or reproduction is permitted which does not comply with these terms.