

Reduction in human Lyme neuroborreliosis associated with a major epidemic among roe deer

Andersen, Nanna Skaarup ; Skarphédinsson, Sigurdur; Knudtzen, Fredrikke Christie; Olesen, Carsten Riis; Jensen, Thøger Gorm; Moestrup Jensen, Per

Published in:
Ticks and Tick-borne Diseases

DOI:
10.1016/j.ttbdis.2017.12.002

Publication date:
2018

Document version:
Accepted manuscript

Document license:
CC BY-NC-ND

Citation for pulished version (APA):
Andersen, N. S., Skarphédinsson, S., Knudtzen, F. C., Olesen, C. R., Jensen, T. G., & Moestrup Jensen, P. (2018). Reduction in human Lyme neuroborreliosis associated with a major epidemic among roe deer. *Ticks and Tick-borne Diseases*, 9(2), 379-381. <https://doi.org/10.1016/j.ttbdis.2017.12.002>

Go to publication entry in University of Southern Denmark's Research Portal

Terms of use

This work is brought to you by the University of Southern Denmark.
Unless otherwise specified it has been shared according to the terms for self-archiving.
If no other license is stated, these terms apply:

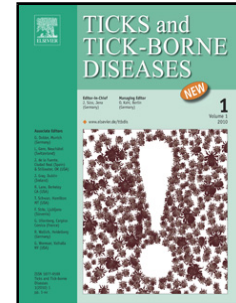
- You may download this work for personal use only.
- You may not further distribute the material or use it for any profit-making activity or commercial gain
- You may freely distribute the URL identifying this open access version

If you believe that this document breaches copyright please contact us providing details and we will investigate your claim.
Please direct all enquiries to puresupport@bib.sdu.dk

Accepted Manuscript

Title: Reduction in human Lyme neuroborreliosis associated with a major epidemic among roe deer

Authors: Nanna Skaarup Andersen, Sigurdur Skarphéðinsson, Fredrikke C Knudtzen, Carsten Riis Olesen, Thøger Gorm Jensen, Per Moestrup Jensen



PII: S1877-959X(17)30556-3
DOI: <https://doi.org/10.1016/j.ttbdis.2017.12.002>
Reference: TTBDIS 918

To appear in:

Received date: 2-9-2016
Revised date: 9-8-2017
Accepted date: 4-12-2017

Please cite this article as: Andersen, Nanna Skaarup, Skarphéðinsson, Sigurdur, Knudtzen, Fredrikke C, Olesen, Carsten Riis, Jensen, Thøger Gorm, Jensen, Per Moestrup, Reduction in human Lyme neuroborreliosis associated with a major epidemic among roe deer. *Ticks and Tick-borne Diseases* <https://doi.org/10.1016/j.ttbdis.2017.12.002>

This is a PDF file of an unedited manuscript that has been accepted for publication. As a service to our customers we are providing this early version of the manuscript. The manuscript will undergo copyediting, typesetting, and review of the resulting proof before it is published in its final form. Please note that during the production process errors may be discovered which could affect the content, and all legal disclaimers that apply to the journal pertain.

Title: Verbal learning and hippocampal dysfunction in schizophrenia:
a meta-analysis.

Mathilde Antoniades, M.Sc^{*1}; Tabea Schoeler, PhD¹; Joaquim Radua, MD, BStat, PhD¹⁻³;
Isabel Valli, MD, PhD¹; Paul Allen, PhD^{1,4}; Matthew J Kempton, PhD^{§1}; Philip McGuire, MD,
PhD^{§1}.

¹Department of Psychosis Studies, King's College London, Institute of Psychiatry, Psychology
and Neuroscience, London, UK.

²FIDMAG Germanes Hospitalàries - CIBERSAM, Sant Boi de Llobregat, Barcelona, Spain

³Centre for Psychiatric Research and Education, Department of Clinical Neuroscience,
Karolinska Institutet, Stockholm, Sweden.

⁴Department of Psychology, University of Roehampton, London, UK.

§ Authors contributed equally.

Word count abstract: 167

Word count text: 4545

Number of figures: 2

Number of tables: 2

Supplementary material: 8 figures, 2 tables.

*Corresponding Author: Mathilde Antoniades, MSc., Department of Psychosis Studies,
Institute of Psychiatry, Psychology and Neuroscience, PO63 De Crespigny Park, London, SE5
8AF, Tel: +44 7500 663702, Fax: +44 20 7848 0287, e-mail: mathilde.antoniades@kcl.ac.uk

Highlights:

- Verbal learning is one of the most impaired cognitive functions in schizophrenia.
- Novel method for including unreported non-significant effects in the meta-analysis.
- Positive correlations between verbal learning and hippocampal volume in SCZ.
- Absent correlations in healthy controls.

Abstract

This meta-analysis summarizes research examining whether deficits in verbal learning are related to bilateral hippocampal volume reductions in patients with or at risk for schizophrenia and in healthy controls. 17 studies with 755 patients with schizophrenia (SCZ), 232 Genetic High Risk (GHR) subjects and 914 healthy controls (HC) were included. Pooled correlation coefficients were calculated between hemisphere (left, right or total) and type of recall (immediate or delayed) for each diagnostic group individually (SCZ, GHR and HC). In SCZ, left and right hippocampal volume positively correlated with immediate ($r= 0.256, 0.230$) and delayed ($r= 0.132, 0.231$) verbal recall. There was also a correlation between total hippocampal volume and delayed recall ($r= 0.233$). None of these correlations were significant in healthy controls. There was however, a positive correlation between left hippocampal volume and immediate recall in the GHR group ($r= 0.356$). The results suggest that hippocampal volume affects immediate and delayed verbal learning capacity in schizophrenia and provides further evidence of hippocampal dysfunction in the pathophysiology of schizophrenia.

Key words: Cognition, volume, MRI, memory, genetic risk, medial temporal lobe.

Introduction

Schizophrenia (SCZ) is a complex disorder with widespread neuroanatomical and neurofunctional deficits. It is associated with a substantial cognitive impairment that affects working memory, processing speed, attention and verbal memory (Heinrichs and Zakzanis, 1998; Dickinson et al., 2007; Fioravanti et al., 2005; Mesholam-Gately et al., 2009). Such cognitive deficits have been shown to be present in children and adolescents who later develop schizophrenia, long before they develop any overt symptoms (Reichenberg et al., 2010). Cognitive deficits have also been detected in the prodromal stage of the illness (Bora and Murray, 2014) and in first-episode patients (Mesholam-Gately et al., 2009). Furthermore, studies have consistently found that verbal learning has shown the greatest impairment throughout the disease stages (Massuda et al., 2013; Mesholam-Gately et al., 2009; Stone et al., 2011; Lencz et al., 2006; Silver and Bilker, 2015).

The most common way to assess verbal learning is through the use of word list learning tasks such as the Rey Auditory Verbal Learning Task (RAVLT, Lezak, 2004), the California Verbal Learning task (Delis, 1987), the Hopkins Verbal Learning Test (Brandt, 2001) or with the Logical Memory Stories test of the Wechsler Memory Scale (Wechsler, 1987). All of these tasks provide a measure of immediate and delayed recall. Factor analysis of the RAVLT revealed three basic factors: acquisition, storage and retrieval (Vakil and Blachstein, 1993). Thus, measures of immediate recall may reflect the cellular process of encoding and delayed recall may reflect the processes of storage and retrieval (Delis et al., 1991).

Verbal learning and memory relies on a network of regions including the prefrontal cortex and medial temporal lobe (MTL) structures, where the hippocampus is important for the acquisition of new information (Simons and Spiers, 2003; Preston and Eichenbaum, 2013).

More specifically, studies have shown that the CA2, CA3 and dentate gyrus were activated during encoding of face-name and object-name pairs whereas the subiculum was activated during retrieval (Zeineh et al., 2003; Eldridge et al., 2005). In shorter time periods, the hippocampus is thought to aid retrieval by reactivating neurons that were involved in learning (Tanaka et al., 2014). The combination of these findings and results from many other studies (Kircher et al., 2008; Davachi & Wagner, 2002; Duncan et al., 2014; Hunsaker and Kesner, 2013; Kesner, 2007) highlight the importance of the hippocampus in the encoding, storage and retrieval of memories.

The hippocampus is thought to be one of the key regions implicated in the pathophysiology of schizophrenia (Lodge and Grace, 2011). Studies consistently report hippocampal volume reductions in patients with schizophrenia in comparison to healthy controls (HC, van Erp et al., 2016; Adriano et al., 2012; Steen et al., 2006); a finding that is also reported in high risk individuals (Wood et al., 2010; Witthaus et al., 2010; Phillips et al., 2002). Furthermore, an examination into the functioning of the regions involved in verbal learning has shown that patients with schizophrenia (Jessen et al., 2003; Weiss et al., 2004) and those at risk for psychosis (Allen et al., 2011; 2012) have reduced activation in both prefrontal and MTL structures. Thus, abnormalities in hippocampal integrity and function could be related to some of the cognitive deficits observed in patients with or at risk for schizophrenia.

Based on the presence of both memory deficits and hippocampal abnormalities in patients with schizophrenia, many researchers examined the link between verbal learning performance and hippocampal volume. These studies report positive (Herold et al., 2015; Sanfilippo et al., 2002) and negative (Thoma et al., 2009) correlations but the majority report non-significant findings. The aim of this meta-analysis is to pool the results from these

studies, which often have small sample sizes, in order to reveal the relationship between verbal learning and hippocampal volume in patients with or at risk for schizophrenia.

Our hypotheses were threefold. First, based on the findings showing that patients with schizophrenia have impairments in verbal learning and that they have hippocampal volume reductions, we hypothesised that there would be a positive correlation between bilateral hippocampal volume and verbal learning performance in patients with schizophrenia.

Second, based on the meta-analytic findings that verbal encoding more so than retrieval is lateralised to the left hippocampus (Persson and Soderlund, 2015), we hypothesised that correlations would be between immediate recall (as a measure of encoding) and left hippocampal volume. Third, we hypothesised that positive correlations would also exist in subjects at risk for schizophrenia, mirroring those in the schizophrenia group.

Methods

Search strategy

A systematic literature search strategy was conducted between January 1st 1980 and June 16th 2016 following the Preferred Reporting Items for Systematic Reviews and Meta-Analyses (PRISMA) guidelines (Moher et al., 2009). The PubMed database was used to identify relevant publications with the following search terms: "schizophrenia", "psychosis", "hippocamp*", "medial temporal lobe", "volume", "verbal", "neuropsych*", "learning" and "recall". All returned articles were screened and all texts other than original articles were excluded (e.g. reviews). The remaining studies were then assessed for eligibility and finally for inclusion criteria. We also examined the bibliographies of the included articles and the

main reviews on this topic to identify any additional studies for inclusion. A flow chart of the selection process for this meta-analysis is shown in Figure 1.

- INSERT FIGURE 1 HERE -

Selection criteria

Studies were eligible for inclusion if they: 1) were original articles written in English; 2) compared patients with DSM-III (APA, 1980) or later diagnosis of schizophrenia spectrum disorders or clinical (Fusar-Poli et al., 2013) or genetic (Johnstone et al., 2000) high risk state for psychosis with healthy controls; 3) used a region of interest approach with either manual or automatic segmentation of the hippocampus (studies using whole-brain voxel based morphometry methods were excluded); 4) directly correlated hippocampal volume and measures of verbal learning and 5) correlations were assessed in both patient and control groups. Studies were excluded if: 1) the patient group included diagnoses other than schizophrenia (e.g. Bipolar disorder) or 2) there were overlapping samples (i.e. data from the same participants were used in two or more separate studies), in which case the study with the smaller data set was excluded (Herold et al., 2013; Nestor et al., 2007).

Recorded variables

Simple and partial correlation coefficients between the verbal learning task and hippocampal volume were extracted by one author (M.A) and independently verified by another (T.S). The following variables were also recorded from each article: reference, publication year, sample size, age, percentage of males, task, illness stage, percentage of SCZ sample taking antipsychotic treatment, hippocampal region, method of segmentation,

field strength, type of correlation and correlation covariates. Wherever there was missing data, the authors were contacted (10 were contacted and 3 provided missing information).

Statistical analysis

After contact with the authors, we did not know the specific correlation coefficients of a number of studies but we knew that they had not reached statistical significance. In other words, these correlations were non-statistically significant unreported effects (NSUEs), (SCZ: Haukvik et al., 2015 and HC: Lappin et al., 2014; Guo et al., 2014; Rametti et al., 2007; Karnik-Henry et al., 2012; Kuroki et al., 2006; Sanfilippo et al., 2002). Importantly, studies with NSUEs cannot be excluded as this would bias the meta-analysis towards the probably larger correlations reported in the non-NSUEs studies; note that studies finding larger, statistically-significant effects usually report these effects, whereas studies finding smaller, non-statistically significant effects may not report them. In order to overcome this bias and correctly include studies with NSUEs, we used a novel method called MetaNSUE developed and validated in Radua et al., 2015. Briefly, this method calculates upper and lower bounds where the Fisher z-transformations of the unreported correlations should be according to the alpha levels used in the studies. Then the Fisher z-transformations of the NSUEs are multiply imputed within these thresholds according to the Fisher z-transformation of the most likely correlation coefficient and the most likely between-study heterogeneity. In each set of imputations, a restricted-maximum likelihood random-effects model is used to calculate a meta-analytic Fisher z-transformation, and the Fisher z-transformation of the different imputation sets are finally pooled to obtain a single correlation coefficient (more detail can be found in Radua et al., 2015). Note that random-effects models account for the heterogeneity between studies, e.g. due to the use of different tasks and different

segmentation methods; the percentage heterogeneity that is not due to sampling error was measured with the I^2 statistic. Potential reporting bias was assessed by meta-regressing the Fisher z-transformations of the correlation coefficients by their standard error to identify funnel plot asymmetry and thus show if small studies may have been published only if they had significant results. This test was only done in meta-analyses with more than 10 studies because otherwise the test does not have sufficient power to differentiate between chance and genuine asymmetry (Sterne et al., 2011). Finally, leave-one-out jackknife sensitivity analyses were conducted to see whether a single study might be driving the results.

Studies that provided correlations in sub-regions of the hippocampus (e.g. anterior and posterior hippocampus) were considered as repeated measures and the weights attributed to them were adjusted accordingly with MetaNSUE. This technique avoids the subjective choice of one sub-region over another which could introduce bias into the meta-analysis. Gur et al., 2000 provided separate correlations for men and women, these were included as independent datasets and their weights were adjusted. These adjustments depend on the expected correlation between the repeated measures, which by default is assumed to be 0.3; thus in order to check whether the meta-analysis results could be influenced by this assumption, we ran a sensitivity analysis with the correlation coefficient set to 0 and 1.

Given that simple and partial correlations (the latter is a correlation between two variables whilst adjusting for a third variable) each have their own advantages and disadvantages in terms of comparability or control of potential confounds, we conducted the meta-analysis three times: a) using a combination of simple and partial correlations, depending on the type reported by the study; b) using simple correlations and discarding those studies from which only partial correlations could be obtained; and c) using partial correlations only.

Similarly, separate meta-analyses were run for left, right and total hippocampal volume and for immediate and delayed recall in SCZ and HC. Details of the studies included in each meta-analysis can be found in Table 1 (methodology details of these studies can be found in Table 1 of the Supplementary Material). For the single study reporting findings using the CVLT (Haukvik et al., 2015), the correlation between hippocampal volume and free recall was used (as opposed to the results with cued recall) because this is more comparable to the method of recall in the other verbal learning tasks. Studies using composite scores (a combination of several different verbal learning tasks) were included in the "delayed" category (Karnik-Henry et al., 2012; Sanfilippo et al., 2002; Sachdev et al., 2000).

Although we set out to study the structural-behavioural relationship in individuals at clinical and familial risk of schizophrenia, the search did not reveal any studies examining these correlations in subjects at clinical high risk for schizophrenia. Therefore the meta-analysis was conducted on the five studies that reported correlations in participants with a genetic risk for psychosis (Francis et al., 2013; Toulopoulou et al., 2004; Karnik-Henry et al., 2012).

In order to examine the effect of antipsychotic medication on the correlation coefficients, a meta-regression was conducted using the proportion of each study's SCZ sample taking antipsychotic medication. A meta-regression was also conducted with age in both SCZ and HC, however there was insufficient data to examine the effect of the number of years spent in education.

Wherever possible, mean left and right hippocampal volume data was extracted for HC, SCZ and genetic high risk (GHR) groups and plotted against mean immediate or delayed memory score (raw scores were used except for Francis et al., 2013) to examine how the relationship between these variables in SCZ and GHR groups compared to that in HC (this

data is shown in Figure 2). The data used to compile the graphs is shown in Table 2 of the Supplementary Material but has been converted so that SCZ and GHR values are a percentage of the HC values. Data was only available for 8 studies.

All analyses were performed in R version 3.3 with the MetaNSUE package (<http://www.metansue.com/>).

In order to test the hypothesis that the correlation between immediate recall and left hippocampal volume was stronger than with the right hippocampal volume, correlation coefficients were transformed into z scores ("Fisher's r to z transformation") and the z test statistic was used to determine statistical significance.

- INSERT TABLE 1 HERE -

Results

The details of the analyses along with all the results for patients with schizophrenia and healthy controls are shown in Table 2. Forest plots for the main analyses are presented in the Supplementary Material (Figures 1-8).

- INSERT TABLE 2 HERE -

Meta-analyses in patients with schizophrenia

The analyses run using simple and partial correlations (Forest plots for these analyses are in Figures 1-4 in the Supplementary material) revealed significant positive correlations between left and right hippocampal volume and both immediate and delayed recall ($I^2=$

26.93%, 0%, 0.8% and 1.04%, respectively). Jackknife analyses were run for all analyses and showed similar correlations when any single study was discarded. Potential reporting bias was only examined for the Left Hippocampus-Delayed Recall analysis but none was observed ($P = 0.099$). Only the correlation between left and right hippocampal volume and delayed recall were significant in the meta-analysis including simple correlations whereas the meta-analysis including partial correlations only revealed a significant correlation between left hippocampal volume and delayed recall.

The correlation between left hippocampal volume and immediate recall was not significantly greater than the correlation between right hippocampal volume and immediate recall ($Z_{\text{test}} = 0.25$, $P = 0.401$).

A meta-analysis was conducted on studies that provided correlations between total hippocampal volume and delayed recall (other correlations were not available). This analysis included 4 correlations from 2 studies with reported correlations (Exner et al., 2008; Gur et al., 2000: separate correlations were available for males and females) and 1 study (Haukvik et al., 2015) with an NSUE (the total sample size was $n=293$). There was a significant positive correlation between delayed verbal recall and total hippocampal volume in patients with schizophrenia ($r = 0.228$; $P = 0.0138$; 95% CI, 0.047-0.394; $I^2 = 14.35\%$). Jackknife analyses revealed a loss of significance when a correlation by (Gur et al., 2000) was discarded ($r=0.163$, $P=0.0516$). Individual removal of all other studies did not affect the correlations (r range, 0.244 to 0.297 and P range, 0.005 to 0.035).

Meta-analyses in healthy controls

The analyses between left and right hippocampal volume and immediate and delayed recall were all non-significant in healthy controls ($I^2=57.09\%$, 7.58%, 54.51% and 9.63%,

respectively). Jackknife analyses showed similar correlations when any single study was discarded in all analyses except for the Right Hippocampus-Delayed recall. There, they showed a significant correlation when Killgore et al. (2009) was discarded ($r=0.159$, $P=0.02$), when (Exner et al., 2008) was discarded ($r=0.150$, $P=0.03$) and when a correlation from (Herold et al., 2015) was discarded ($r=0.129$, $P=0.048$). No potential reporting bias was observed for the Left or the Right Hippocampus-Delayed Recall analyses ($P = 0.54$, 0.87 ; respectively). Forest plots of the analyses using combined simple and partial correlations are shown in Figures 5-8 in the Supplementary material. The correlations remained non-significant when only simple correlations were meta-analysed but became significant when only considering the partial correlations.

The meta-analysis between total hippocampal volume and delayed recall included 5 correlations from 4 studies with reported correlations (Haukvik et al., 2015; Exner et al., 2008; O'Driscoll et al., 2001; Gur et al., 2000) and one study with an NSUE (Gur et al., 2000), (total sample size, $n=387$). There was no correlation between total hippocampal volume and delayed verbal recall in healthy controls ($r= 0.104$; $P > .05$; 95% CI, $-0.065-0.267$; $I^2 = 15.01\%$). Jackknife analyses showed similar correlations when each study was discarded (r range, 0.016 to 0.149 and $P > 0.05$ in all cases).

Meta-analysis in GHR

The meta-analysis between left hippocampal volume and immediate recall (Francis et al., 2013; Seidman et al., 2002) revealed a significant positive correlation in GHR subjects ($n=89$, $r= 0.356$; $P = .0009$; 95% CI, $0.153-0.531$; $I^2 = 0\%$), however this analysis has a very small number of studies. Jackknife analyses showed similar correlations when each study was discarded (r range, 0.331 to 0.398 and $P < .05$ in all cases).

There were no significant correlations between left hippocampal volume and delayed recall ($n=228$, $r = -0.031$; $P > .05$; 95% CI, $-0.223-0.163$; $I^2 = 32.17\%$) or between right hippocampal volume and immediate ($n=89$, $r = 0.160$; $P > .05$; 95% CI, $-0.075-0.379$; $I^2 = 10.95\%$) or delayed recall ($n=107$, $r = -0.034$; $P > .05$; 95% CI, $-0.237-0.171$; $I^2 = 4.36\%$) in GHR subjects. Jackknife analyses showed similar correlations when each study was discarded in each analysis.

The number of studies examining the correlation between total hippocampal volume and measures of recall in GHR subjects was too small to permit a meta-analysis.

- INSERT FIGURE 2 HERE -

Sensitivity analysis

No changes were observed on any meta-analysis result when the value of the parameter was set to 0 or 1.

Meta-regression

The meta-regression revealed a significant but very weak negative correlation between correlation coefficients for the Left Hippocampus-Immediate Recall analysis and the proportion of the SCZ sample taking antipsychotic medication ($r = -0.004$, $P = 0.03$, $n=5$ studies). Data for the proportion of the SCZ sample on antipsychotic medication was unavailable for one study (Lappin et al., 2014) however no significant correlations were found for all other meta-analyses (Left Hippocampus-Delayed Recall: $r = -0.009$, $P > .05$, $n=10$ studies; Right Hippocampus-Immediate Recall: $r = 0.001$, $P > .05$, $n=5$ studies; Right Hippocampus-Delayed Recall: $r = -0.016$, $P > .05$, $n=7$ studies).

Age was not related to correlation coefficients of any of the meta-analyses in patients with schizophrenia (Left Hippocampus-Immediate Recall: $r = -0.014$, $P = 0.07$, $n = 5$ studies; Left Hippocampus-Delayed Recall: $r = 0.003$, $P = 0.619$, $n = 10$ studies; Right Hippocampus-Immediate Recall: $r = 0.008$, $P = 0.286$, $n = 5$ studies; Right Hippocampus-Delayed Recall: $r = 0.012$, $P = 0.126$, $n = 7$ studies) but was significantly correlated with correlation coefficients for Right Hippocampus-Immediate Recall analysis in healthy controls ($r = 0.014$, $P = 0.049$, $n = 7$ studies). All other regressions in healthy controls were non-significant (Left Hippocampus-Immediate Recall: $r = 0.014$, $P = 0.09$, $n = 7$ studies; Left Hippocampus-Delayed Recall: $r = 0.004$, $P = 0.436$, $n = 13$ studies; Right Hippocampus-Delayed Recall: $r = 0.005$, $P = 0.401$, $n = 10$ studies).

Discussion

Here we present findings that show a significant positive correlation between bilateral hippocampal volume and the ability to recall verbal information immediately and after a short delay in patients with schizophrenia. Thus, as hippocampal volume decreases, verbal recall performance worsens. Furthermore, contrary to the hypothesis, although the correlation between the left hippocampus and immediate recall is qualitatively larger than the right, there was no statistically significant difference between the two.

There were no correlations between hippocampal volume and verbal learning in healthy controls. However, some correlations in the healthy control group became significant when pooling partial correlations together. Thus, covariates that may affect hippocampal size such as years of education, age, gender or total intracranial volume may have an impact on

verbal learning ability in healthy controls but the covariates from the different studies were too varied to derive a meaningful conclusion.

Previous investigations into the structure-function relationship have often revealed positive correlations between hippocampal volume and declarative memory performance only in the presence of pathology (e.g. Bonner-Jackson et al., 2015). However, a meta-analysis in healthy participants revealed a high degree of variability in the relationship between hippocampal volume and episodic memory in healthy participants where the relationship was negative in children, adolescents and young adults and almost absent in older participants (Van Petten, 2004). Thus, the absence of correlation in the current meta-analysis is consistent with previous findings that structure-behaviour relationships occur in the presence of pathology and could be due to the large variability in mean age of the healthy control participants (mean age range in current meta-analysis: 20 to 73) such that any effect in younger participants could be masked by the absence of effect in older participants. Furthermore, results from the meta-regression suggest that age only had an effect on the relationship between the right hippocampal volume and immediate recall in healthy controls.

In GHR subjects, only the left hippocampal volume was correlated with immediate recall. However, the number of studies in this analysis was very small ($n=2$) and should therefore be treated with caution. This finding is consistent with a study showing that verbal learning is lateralised to the left anterior hippocampus (Persson and Soderlund, 2015). Although these participants were not symptomatic at the time of the studies, it is interesting to see that they have a similar relationship between verbal learning and left hippocampal volume to that seen in patients with schizophrenia. This suggests that some genetic factors may be influencing hippocampal volume, which is consistent with a recent study showing an

association between hippocampal volume and the Polygenic Schizophrenia-related Risk Score (Harrisberger et al., 2016).

Functional imaging studies in patients with and at risk for schizophrenia consistently report changes in activation during verbal encoding and retrieval in the hippocampus and regions of the prefrontal cortex (Allen et al., 2011; Hofer et al., 2003; Kubicki et al., 2003; Ragland et al., 2001; Zierhut et al., 2010). Further studies also suggest abnormal resting state connectivity between the hippocampus and regions of the prefrontal cortex (Knochel et al., 2014; Kuhn et al., 2013; Cui et al., 2015; Zhou et al., 2008; Kraguljac et al., 2014; Duan et al., 2015; Tang et al., 2016). The same patients who had abnormal connectivity between the hippocampus and prefrontal cortex also had reduced hippocampal volume and abnormal white matter fibre integrity in the tracts connecting the hippocampus to regions of the frontal lobe (Knochel et al., 2014). Therefore, deficits in verbal memory may be related to a reduced connectivity between the hippocampus and prefrontal cortex secondary to a reduction of hippocampal volume.

Hippocampal volume reductions have been consistently reported in schizophrenia (van Erp et al., 2016) with volume reductions spreading throughout the subfields as the illness becomes more chronic (Ho et al., 2016). Previous studies suggest that hippocampal atrophy in patients with schizophrenia may arise from an imbalance in excitatory and inhibitory transmission (Schobel et al., 2013) secondary to a reduced functioning of N-methyl-D-aspartate (NMDA) receptors and a loss of parvalbumin-containing GABAergic interneurons (Braun et al., 2007; Schobel et al., 2013; Lisman et al., 2008). GABAergic interneurons are important for synchronising the activity of glutamatergic pyramidal cells via the production of gamma oscillations (Gonzalez-Burgos et al., 2012), a mechanism by which they help

regulate cognitive functions such as learning and memory but may also be important for the retrieval of information (Sejnowski and Paulsen, 2006).

Whilst long-term use of antipsychotic medication has been associated with a decline in verbal learning and memory (Husa et al., 2014), more effective treatments may aim to reduce hippocampal volume loss or normalise hippocampal activity or the connectivity between the hippocampus and frontal lobe regions. Antidepressants are able to stimulate hippocampal neurogenesis and increase GABA levels (Malberg et al., 2000; Simpson et al., 2012) and may enhance long term memory (Bowie et al., 2012). Certain cholinergic agonists have shown efficacy at improving cognition and function in patients with schizophrenia (Keefe et al., 2015) whilst a partial agonist improved verbal learning and working memory (Haig et al., 2016). Other factors that can affect hippocampal volume and are common in patients with schizophrenia are the use of cannabis or the presence of chronic stress (Schlosser et al., 2012; Green, Young and Kavanagh, 2005; Barha et al., 2011; Demirakca et al., 2011). Therefore, therapies that help manage stress or reduce the intake of cannabis in this population may lead to beneficial improvements in verbal memory.

From the results, it is clear that covariates may influence the relationship between verbal learning and hippocampal volume differently in patients with schizophrenia and in healthy controls and the inability to properly examine the effects of these covariates suggests that the results should be treated with caution. Also, by restricting the focus of this meta-analysis to verbal learning and the hippocampus; it is not possible to know whether hippocampal volume abnormalities are related to other deficits in cognitive abilities or whether verbal learning relates to volume changes in other brain regions.

One of the limitations of this study is the variation in hippocampal segmentation methodologies and thus in the definition of the boundaries of the structure which in turn

would affect volume measurements. Furthermore, some studies chose to divide the hippocampus into anterior and posterior regions, which is unlikely to be consistent across studies. Similarly, not all studies used absolute volume in their correlations although some studies added total intracranial volume as a covariate instead. There was also variation in the average age of the patients across the studies (age range 20-65) which itself affects regional volume and cognitive abilities (Driscoll et al., 2003) and may make the studies less comparable. However, studies examining cognitive decline over time have shown that patients with schizophrenia decline at a similar rate to healthy controls (Rannikko et al., 2015; Raji et al., 2013).

Antipsychotic medication is also known to affect hippocampal volume (Zierhut et al., 2013; Yang et al., 2015) and hippocampal neurogenesis (Newton and Duman, 2007) which contributes to learning and memory (Deng et al., 2010; Lazarov and Hollands, 2016). However, only a proportion of patients from all studies were being treated with antipsychotic medication. Furthermore, the results from the meta-regressions suggest that antipsychotic medication may not be influencing the results of this meta-analysis.

Another limitation arises from the design of the tasks used to measure verbal learning abilities. Delayed recall is only measured after around a 20-minute break; therefore such tasks do not allow for the assessment of longitudinal recall of information over months or years. Although the studies are relatively homogeneous in the tasks used, some tasks may involve slightly different cognitive demands. For example, the CVLT and HVLTL have groups of words that are semantically organised which may improve recall (Poirier and Saint-Aubin, 1995) and may recruit a larger network of regions (Binder and Desai, 2011) than the RAVLT which contains unrelated words. Therefore, future research may consider the relationship between hippocampal volumes and individual tasks.

Future research should also examine the relationship between hippocampal subfields and different aspects of memory (e.g. encoding vs. retrieval) because there were insufficient studies reporting findings in hippocampal subfields to examine this in this meta-analysis.

One could expect a higher correlation between immediate recall and Cornu

Ammonis/dentate gyrus regions and between delayed recall and the subiculum (Persson and Soderlund, 2015; Zeineh et al., 2003; Eldridge et al., 2005). Finally, it would be interesting to study these effects in a sample of subjects at ultra-high risk for psychosis as this group has a higher risk of transitioning to frank psychosis compared to GHR subjects (Fusar-Poli et al., 2016).

In conclusion, patients with schizophrenia show variations in bilateral hippocampal volume that are associated with deficits in verbal learning memory. This supports a role for the hippocampus in the development of some of the cognitive symptoms observed in schizophrenia.

Acknowledgements: None reported.

Conflict of Interest Disclosures: None Reported.

Funding: This study was supported in part by an Instituto de Salud Carlos III and FEDER grant (CP14/00041) to JR. The funders had no influence on the study design, collection, analysis and interpretation of the data, writing of the report and in the decision to submit the article for publication. The researchers are independent from the funders. MJK was funded by an MRC Career Development Fellowship (MR/J008915/1). MA is supported by an IoPPN Excellence Studentship.

References

Adriano, F., Caltagirone, C. & Spalletta, G. 2012. Hippocampal volume reduction in first-episode and chronic schizophrenia: a review and meta-analysis. *Neuroscientist*, 18, 180-200.

Allen, P., Luigjes, J., Howes, O. D., Egerton, A., Hirao, K., Valli, I., Kambeitz, J., Fusar-Poli, P., Broome, M. & McGuire, P. 2012. Transition to psychosis associated with prefrontal and subcortical dysfunction in ultra high-risk individuals. *Schizophr Bull*, 38, 1268-76.

Allen, P., Seal, M. L., Valli, I., Fusar-Poli, P., Perlini, C., Day, F., Wood, S. J., Williams, S. C. & McGuire, P. K. 2011. Altered prefrontal and hippocampal function during verbal encoding and recognition in people with prodromal symptoms of psychosis. *Schizophr Bull*, 37, 746-56.

APA, American Psychiatric Association, 1980. *Diagnostic and Statistical Manual of Mental Disorders* Washington, DC: American Psychiatric Association.

Barha C. K., Brummelte S., Lieblich S. E., Galea L. A. 2011. Chronic restraint stress in adolescence differentially influences hypothalamic-pituitary-adrenal axis function and adult hippocampal neurogenesis in male and female rats. *Hippocampus*, 21, 1216-27.

Binder, J. R. & Desai, R. H. 2011. The neurobiology of semantic memory. *Trends Cogn Sci*, 15, 527-36.

Bonner-Jackson A., Mahmoud S., Miller J., Banks S. J. 2015. Verbal and non-verbal memory and hippocampal volumes in a memory clinic population. *Alzheimers Res Ther*, 7, 61.

Bora, E. & Murray, R. M. 2014. Meta-analysis of cognitive deficits in ultra-high risk to psychosis and first-episode psychosis: do the cognitive deficits progress over, or after, the onset of psychosis? *Schizophr Bull*, 40, 744-55.

Bowie C. R., McLaughlin D., Carrion R. E., Auther A. M., Cornblatt B. A. 2012. Cognitive changes following antidepressant or antipsychotic treatment in adolescents at clinical risk for psychosis. *Schizophrenia research*, 137, 110-17.

Brandt, J., & Benedict, R. H. B. 2001. *Hopkins Verbal Learning Test—Revised*. Professional manual, Lutz, FL, Psychology Assessment Resources, Inc.

Braun, I., Genius, J., Grunze, H., Bender, A., Moller, H. J. & Rujescu, D. 2007. Alterations of hippocampal and prefrontal GABAergic interneurons in an animal model of psychosis induced by NMDA receptor antagonism. *Schizophr Res*, 97, 254-63.

Cui L. B., Liu J., Wang L. X., et al. 2015. Anterior cingulate cortex-related connectivity in first-episode schizophrenia: a spectral dynamic causal modelling study with functional magnetic resonance imaging. *Frontiers in human neuroscience*, 9:589.

Davachi, L. & Wagner, A. D. 2002. Hippocampal contributions to episodic encoding: insights from relational and item-based learning. *J Neurophysiol*, 88, 982-90.

Delis, D. C., Kramer, J. H., Kaplan, E., Ober, B. A. 1987. *California Verbal Learning Test: Adult Version*. Manual, San Antonio, Tex, Psychological Corporation.

- Delis, D. C., Massman, P. J., Butters, N., Salmon, D. P., Cermak, L. S., & Kramer, J. H. 1991. Profiles of demented and amnesic patients on the California Verbal Learning Test: Implications for the assessment of memory disorders. *Psychological Assessment: A Journal of Consulting and Clinical Psychology*, 3, 19.
- Demirakca T., Sartorius A., Ende G., Meyer N., Welzel H., Skopp G., Mann K., Hermann D. 2011. Diminished gray matter in the hippocampus of cannabis users: possible protective effects of cannabidiol. *Drug Alcohol Depend*, 114, 242-45.
- Deng, W., Aimone, J. B. & Gage, F. H. 2010. New neurons and new memories: how does adult hippocampal neurogenesis affect learning and memory? *Nat Rev Neurosci*, 11,339-50.
- Dickinson, D., Ramsey, M. E. & Gold, J. M. 2007. Overlooking the obvious: a meta-analytic comparison of digit symbol coding tasks and other cognitive measures in schizophrenia. *Arch Gen Psychiatry*, 64, 532-42.
- Driscoll, I., Hamilton, D. A., Petropoulos, H., Yeo, R. A., Brooks, W. M., Baumgartner, R. N. & Sutherland, R. J. 2003. The aging hippocampus: cognitive, biochemical and structural findings. *Cereb Cortex*, 13, 1344-51.
- Duan H. F., Gan J. L., Yang J. M., et al. 2015. A longitudinal study on intrinsic connectivity of hippocampus associated with positive symptom in first-episode schizophrenia. *Behavioural brain research*, 283:78-86.
- Duncan, K., Tomparly, A. & Davachi, L. 2014. Associative encoding and retrieval are predicted by functional connectivity in distinct hippocampal area CA1 pathways. *J Neurosci*, 34, 11188-98.
- Eldridge, L. L., Engel, S. A., Zeineh, M. M., Bookheimer, S. Y. & Knowlton, B. J. 2005. A dissociation of encoding and retrieval processes in the human hippocampus. *J Neurosci*, 25, 3280-6.
- Exner, C., Nehrkorn, B., Martin, V., Huber, M., Shiratori, K. & Rief, W. 2008. Sex-dependent hippocampal volume reductions in schizophrenia relate to episodic memory deficits. *J Neuropsychiatry Clin Neurosci*, 20, 227-30.
- Fioravanti, M., Carlone, O., Vitale, B., Cinti, M. E. & Clare, L. 2005. A meta-analysis of cognitive deficits in adults with a diagnosis of schizophrenia. *Neuropsychol Rev*, 15, 73-95.
- Francis, A. N., Seidman, L. J., Tandon, N., Shenton, M. E., Thermenos, H. W., Mesholam-Gately, R. I., Van Elst, L. T., Tuschke-Caffier, B., Delisi, L. E. & Keshavan, M. S. 2013. Reduced subicular subdivisions of the hippocampal formation and verbal declarative memory impairments in young relatives at risk for schizophrenia. *Schizophr Res*, 151, 154-7.
- Fusar-Poli, P., Borgwardt, S., Bechdolf, A., Addington, J., Riecher-Rossler, A., Schultze-Lutter, F., Keshavan, M., Wood, S., Ruhrmann, S., Seidman, L. J., Valmaggia, L., Cannon, T., Velthorst, E., De Haan, L., Cornblatt, B., Bonoldi, I., Birchwood, M., McGlashan, T., Carpenter,

W., McGorry, P., Klosterkotter, J., McGuire, P. & Yung, A. 2013. The psychosis high-risk state: a comprehensive state-of-the-art review. *JAMA Psychiatry*, 70, 107-20.

Fusar-Poli, P., Cappucciati, M., Borgwardt, S., Woods, S. W., Addington, J., Nelson, B., Nieman, D. H., Stahl, D. R., Rutigliano, G., Riecher-Rossler, A., Simon, A. E., Mizuno, M., Lee, T. Y., Kwon, J. S., Lam, M. M., Perez, J., Keri, S., Amminger, P., Metzler, S., Kawohl, W.,

Green B., Young R., Kavanagh D. 2005. Cannabis use and misuse prevalence among people with psychosis. *The British journal of psychiatry : the journal of mental science*, 187, 306-13.

Gonzalez-Burgos, G. & Lewis, D. A. 2012. NMDA receptor hypofunction, parvalbumin-positive neurons, and cortical gamma oscillations in schizophrenia. *Schizophr Bull*, 38, 950-7.

Guo, X., Li, J., Wang, J., Fan, X., Hu, M., Shen, Y., Chen, H. & Zhao, J. 2014. Hippocampal and orbital inferior frontal gray matter volume abnormalities and cognitive deficit in treatment-naive, first-episode patients with schizophrenia. *Schizophr Res*, 152, 339-43.

Gur, R. E., Turetsky, B. I., Cowell, P. E., Finkelman, C., Maany, V., Grossman, R. I., Arnold, S. E., Bilker, W. B. & Gur, R. C. 2000. Temporolimbic volume reductions in schizophrenia. *Arch Gen Psychiatry*, 57, 769-75.

Haig G. M. B. E., Robieson W. Z., Baker J. D., Othman A. A. 2016. A Randomized Trial to Assess the Efficacy and Safety of ABT-126, a Selective $\alpha 7$ Nicotinic Acetylcholine Receptor Agonist, in the Treatment of Cognitive Impairment in Schizophrenia. *The American journal of psychiatry*, 173, 827-35.

Harrisberger, F., Smieskova, R., Vogler, C., Egli, T., Schmidt, A., Lenz, C., Simon, A. E., Riecher-Rossler, A., Papassotiropoulos, A. & Borgwardt, S. 2016. Impact of polygenic schizophrenia-related risk and hippocampal volumes on the onset of psychosis. *Transl Psychiatry*, 6, e868.

Haukvik, U. K., Westlye, L. T., Morch-Johnsen, L., Jorgensen, K. N., Lange, E. H., Dale, A. M., Melle, I., Andreassen, O. A. & Agartz, I. 2015. In vivo hippocampal subfield volumes in schizophrenia and bipolar disorder. *Biol Psychiatry*, 77, 581-8.

Heinrichs, R. W. & Zakzanis, K. K. 1998. Neurocognitive deficit in schizophrenia: a quantitative review of the evidence. *Neuropsychology*, 12, 426-45.

Herold, C. J., Lasser, M. M., Schmid, L. A., Seidl, U., Kong, L., Fellhauer, I., Thomann, P. A., Essig, M. & Schroder, J. 2013. Hippocampal volume reduction and autobiographical memory deficits in chronic schizophrenia. *Psychiatry Res*, 211, 189-94.

Herold, C. J., Lasser, M. M., Schmid, L. A., Seidl, U., Kong, L., Fellhauer, I., Thomann, P. A., Essig, M. & Schroder, J. 2015. Neuropsychology, autobiographical memory, and hippocampal volume in "younger" and "older" patients with chronic schizophrenia. *Front Psychiatry*, 6, 53.

Ho, N. F., Iglesias, J. E., Sum, M. Y., Kuswanto, C. N., Sitoh, Y. Y., De Souza, J., Hong, Z., Fischl, B., Roffman, J. L., Zhou, J., Sim, K. & Holt, D. J. 2016. Progression from selective to general involvement of hippocampal subfields in schizophrenia. *Mol Psychiatry*.

Hofer A., Weiss E. M., Golaszewski S. M., Siedentopf C. M., Brinkhoff C., Kremser C., Felber S., Fleischhacker W. W. 2003. Neural correlates of episodic encoding and recognition of words in unmedicated patients during an acute episode of schizophrenia: a functional MRI study. *The American journal of psychiatry*, 160, 1802-08.

Hunsaker, M. R. & Kesner, R. P. 2013. The operation of pattern separation and pattern completion processes associated with different attributes or domains of memory. *Neurosci Biobehav Rev*, 37, 36-58.

Husa A. P., Rannikko I., Moilanen J., et al. 2014. Lifetime use of antipsychotic medication and its relation to change of verbal learning and memory in midlife schizophrenia - An observational 9-year follow-up study. *Schizophrenia research*, 158, 134-41.

Jessen, F., Scheef, L., Gernsmeisen, L., Tawo, Y., Kockler, M., Kuhn, K. U., Maier, W., Schild, H. H. & Heun, R. 2003. Reduced hippocampal activation during encoding and recognition of words in schizophrenia patients. *Am J Psychiatry*, 160, 1305-12.

Johnstone, E. C., Abukmeil, S. S., Byrne, M., Clafferty, R., Grant, E., Hodges, A., Lawrie, S. M. & Owens, D. G. 2000. Edinburgh high risk study--findings after four years: demographic, attainment and psychopathological issues. *Schizophr Res*, 46, 1-15.

Karnik-Henry, M. S., Wang, L., Barch, D. M., Harms, M. P., Campanella, C. & Csernansky, J. G. 2012. Medial temporal lobe structure and cognition in individuals with schizophrenia and in their non-psychotic siblings. *Schizophr Res*, 138, 128-35.

Keefe R. S., Meltzer H. A., Dgetluck N., Gawryl M., Koenig G., Moebius H. J., Lombardo I., Hilt D. C. 2015. Randomized, Double-Blind, Placebo-Controlled Study of Encenicline, an alpha7 Nicotinic Acetylcholine Receptor Agonist, as a Treatment for Cognitive Impairment in Schizophrenia. *Neuropsychopharmacology*, 40, 3053-60.

Kesner, R. P. 2007. Behavioral functions of the CA3 subregion of the hippocampus. *Learn Mem*, 14, 771-81.

Killgore, W. D., Rosso, I. M., Gruber, S. A. & Yurgelun-Todd, D. A. 2009. Amygdala volume and verbal memory performance in schizophrenia and bipolar disorder. *Cogn Behav Neurol*, 22, 28-37.

Kircher, T., Weis, S., Leube, D., Freymann, K., Erb, M., Jessen, F., Grodd, W., Heun, R. & Krach, S. 2008. Anterior hippocampus orchestrates successful encoding and retrieval of non-relational memory: an event-related fMRI study. *Eur Arch Psychiatry Clin Neurosci*, 258, 363-72.

- Knochel C., Stablein M., Storchak H., et al. 2014. Multimodal assessments of the hippocampal formation in schizophrenia and bipolar disorder: evidences from neurobehavioral measures and functional and structural MRI. *Neuroimage Clin*, 6, 134-44.
- Kraguljac N. V., White D. M., Hadley J., Reid M. A., Lahti A. C. 2014. Hippocampal-parietal dysconnectivity and glutamate abnormalities in unmedicated patients with schizophrenia. *Hippocampus*, 24, 1524-32.
- Kubicki M., McCarley R. W., Nestor P. G., Huh T., Kikinis R., Shenton M. E., Wible C. G. 2003. An fMRI study of semantic processing in men with schizophrenia. *Neuroimage*, 20, 1923-33.
- Kuhn S., Gallinat J. 2013. Resting-state brain activity in schizophrenia and major depression: a quantitative meta-analysis. *Schizophr Bull*, 39, 358-65.
- Kuroki, N., Kubicki, M., Nestor, P. G., Salisbury, D. F., Park, H. J., Levitt, J. J., Woolston, S., Frumin, M., Niznikiewicz, M., Westin, C. F., Maier, S. E., Mccarley, R. W. & Shenton, M. E. 2006. Fornix integrity and hippocampal volume in male schizophrenic patients. *Biol Psychiatry*, 60, 22-31.
- Lappin, J. M., Morgan, C., Chalavi, S., Morgan, K. D., Reinders, A. A., Fearon, P., Heslin, M., Zanelli, J., Jones, P. B., Murray, R. M. & Dazzan, P. 2014. Bilateral hippocampal increase following first-episode psychosis is associated with good clinical, functional and cognitive outcomes. *Psychol Med*, 44, 1279-91.
- Lazarov, O. & Hollands, C. 2016. Hippocampal neurogenesis: Learning to remember. *Prog Neurobiol*, 138-140, 1-18.
- Lencz, T., Smith, C. W., Mclaughlin, D., Auther, A., Nakayama, E., Hovey, L. & Cornblatt, B. A. 2006. Generalized and specific neurocognitive deficits in prodromal schizophrenia. *Biol Psychiatry*, 59, 863-71.
- Lezak, M. D., Howieson, D. B., Loring, D. W., Hannay, H. J., Fisher, J. S. 2004. *Neuropsychological Assessment* New York, New York, Oxford University Press.
- Lisman, J. E., Coyle, J. T., Green, R. W., Javitt, D. C., Benes, F. M., Heckers, S. & Grace, A. A. 2008. Circuit-based framework for understanding neurotransmitter and risk gene interactions in schizophrenia. *Trends Neurosci*, 31, 234-42.
- Lodge, D. J. & Grace, A. A. 2011. Hippocampal dysregulation of dopamine system function and the pathophysiology of schizophrenia. *Trends Pharmacol Sci*, 32, 507-13.
- Malberg J. E., Eisch A. J., Nestler E. J., Duman R. S. 2000. Chronic antidepressant treatment increases neurogenesis in adult rat hippocampus. *J Neurosci*, 20, 9104-10.
- Massuda, R., Bucker, J., Czepielewski, L. S., Narvaez, J. C., Pedrini, M., Santos, B. T., Teixeira, A. S., Souza, A. L., Vasconcelos-Moreno, M. P., Vianna-Sulzbach, M., Goi, P. D., Belmonte-De-Abreu, P. & Gama, C. S. 2013. Verbal memory impairment in healthy siblings of patients with schizophrenia. *Schizophr Res*, 150, 580-2.

- Mesholam-Gately, R. I., Giuliano, A. J., Goff, K. P., Faraone, S. V. & Seidman, L. J. 2009. Neurocognition in first-episode schizophrenia: a meta-analytic review. *Neuropsychology*, 23, 315-36.
- Moher, D., Liberati, A., Tetzlaff, J. & Altman, D. G. 2009. Preferred reporting items for systematic reviews and meta-analyses: the PRISMA statement. *J Clin Epidemiol*, 62, 1006-12.
- Nestor, P. G., Kubicki, M., Kuroki, N., Gurrera, R. J., Niznikiewicz, M., Shenton, M. E. & Mccarley, R. W. 2007. Episodic memory and neuroimaging of hippocampus and fornix in chronic schizophrenia. *Psychiatry Res*, 155, 21-8.
- Newton, S. S. & Duman, R. S. 2007. Neurogenic actions of atypical antipsychotic drugs and therapeutic implications. *CNS Drugs*, 21, 715-25.
- O'driscoll, G. A., Florencio, P. S., Gagnon, D., Wolff, A. V., Benkelfat, C., Mikula, L., Lal, S. & Evans, A. C. 2001. Amygdala-hippocampal volume and verbal memory in first-degree relatives of schizophrenic patients. *Psychiatry Res*, 107, 75-85.
- Persson, J. & Soderlund, H. 2015. Hippocampal hemispheric and long-axis differentiation of stimulus content during episodic memory encoding and retrieval: An activation likelihood estimation meta-analysis. *Hippocampus*, 25, 1614-31.
- Phillips, L. J., Velakoulis, D., Pantelis, C., Wood, S., Yuen, H. P., Yung, A. R., Desmond, P., Brewer, W. & McGorry, P. D. 2002. Non-reduction in hippocampal volume is associated with higher risk of psychosis. *Schizophr Res*, 58, 145-58.
- Poirier, M. & Saint-Aubin, J. 1995. Memory for related and unrelated words: further evidence on the influence of semantic factors in immediate serial recall. *Q J Exp Psychol A*, 48, 384-404.
- Preston, A. R. & Eichenbaum, H. 2013. Interplay of hippocampus and prefrontal cortex in memory. *Curr Biol*, 23, R764-73.
- Radua, J., Schmidt, A., Borgwardt, S., Heinz, A., Schlagenhauf, F., McGuire, P. & Fusar-Poli, P. 2015. Ventral Striatal Activation During Reward Processing in Psychosis: A Neurofunctional Meta-Analysis. *JAMA Psychiatry*, 72, 1243-51.
- Ragland J. D., Gur R. C., Raz J., Schroeder L., Kohler C. G., Smith R. J., Alavi A., Gur R. E. 2001. Effect of schizophrenia on frontotemporal activity during word encoding and recognition: a PET cerebral blood flow study. *Am J Psychiatry*, 158, 1114-25.
- Rajji, T. K., Voineskos, A. N., Butters, M. A., Miranda, D., Arenovich, T., Menon, M., Ismail, Z., Kern, R. S. & Mulsant, B. H. 2013. Cognitive performance of individuals with schizophrenia across seven decades: a study using the MATRICS consensus cognitive battery. *Am J Geriatr Psychiatry*, 21, 108-18.

- Rametti, G., Segarra, N., Junque, C., Bargallo, N., Caldu, X., Ibarretxe, N. & Bernardo, M. 2007. Left posterior hippocampal density reduction using VBM and stereological MRI procedures in schizophrenia. *Schizophr Res*, 96, 62-71.
- Rannikko, I., Haapea, M., Miettunen, J., Veijola, J., Murray, G. K., Barnett, J. H., Husa, A. P., Jones, P. B., Isohanni, M. & Jaaskelainen, E. 2015. Changes in verbal learning and memory in schizophrenia and non-psychotic controls in midlife: A nine-year follow-up in the Northern Finland Birth Cohort study 1966. *Psychiatry Res*, 228, 671-9.
- Reichenberg, A., Caspi, A., Harrington, H., Houts, R., Keefe, R. S., Murray, R. M., Poulton, R. & Moffitt, T. E. 2010. Static and dynamic cognitive deficits in childhood preceding adult schizophrenia: a 30-year study. *Am J Psychiatry*, 167, 160-9.
- Rosler, W., Lee, J., Labad, J., Ziermans, T., An, S. K., Liu, C. C., Woodberry, K. A., Braham, A., Corcoran, C., McGorry, P., Yung, A. R. & McGuire, P. K. 2016. Heterogeneity of Psychosis Risk Within Individuals at Clinical High Risk: A Meta-analytical Stratification. *JAMA Psychiatry*, 73, 113-20.
- Sachdev, P., Brodaty, H., Cheang, D. & Cathcart, S. 2000. Hippocampus and amygdala volumes in elderly schizophrenic patients as assessed by magnetic resonance imaging. *Psychiatry Clin Neurosci*, 54, 105-12.
- Sanfilippo, M., Lafargue, T., Rusinek, H., Arena, L., Loneragan, C., Lautin, A., Rotrosen, J. & Wolkin, A. 2002. Cognitive performance in schizophrenia: relationship to regional brain volumes and psychiatric symptoms. *Psychiatry Res*, 116, 1-23.
- Schlosser D. A., Pearson R., Perez V. B., Loewy R. L. 2012. Environmental Risk and Protective Factors and Their Influence on the Emergence of Psychosis. *Adolesc Psychiatry (Hilversum)*, 2, 163-171.
- Schobel, S. A., Chaudhury, N. H., Khan, U. A., Paniagua, B., Styner, M. A., Asllani, I., Inbar, B. P., Corcoran, C. M., Lieberman, J. A., Moore, H. & Small, S. A. 2013. Imaging patients with psychosis and a mouse model establishes a spreading pattern of hippocampal dysfunction and implicates glutamate as a driver. *Neuron*, 78,81-93.
- Seidman, L. J., Faraone, S. V., Goldstein, J. M., Kremen, W. S., Horton, N. J., Makris, N., Toomey, R., Kennedy, D., Caviness, V. S. & Tsuang, M. T. 2002. Left hippocampal volume as a vulnerability indicator for schizophrenia: a magnetic resonance imaging morphometric study of nonpsychotic first-degree relatives. *Arch Gen Psychiatry*, 59, 839-49.
- Sejnowski, T. J. & Paulsen, O. 2006. Network oscillations: emerging computational principles. *J Neurosci*, 26, 1673-6.
- Silver, H. & Bilker, W. B. 2015. Similar verbal memory impairments in schizophrenia and healthy aging. Implications for understanding of neural mechanisms. *Psychiatry Res*, 226, 277-83.

Simons, J. S. & Spiers, H. J. 2003. Prefrontal and medial temporal lobe interactions in long-term memory. *Nat Rev Neurosci*, 4, 637-48.

Simpson S. M., Hickey A. J., Baker G. B., Reynolds J. N., Beninger R. J. 2012. The antidepressant phenelzine enhances memory in the double Y-maze and increases GABA levels in the hippocampus and frontal cortex of rats. *Pharmacol Biochem Behav*, 102, 109-17.

Steen, R. G., Mull, C., McClure, R., Hamer, R. M. & Lieberman, J. A. 2006. Brain volume in first-episode schizophrenia: systematic review and meta-analysis of magnetic resonance imaging studies. *Br J Psychiatry*, 188, 510-8.

Sterne, J. A., Sutton, A. J., Ioannidis, J. P., Terrin, N., Jones, D. R., Lau, J., Carpenter, J., Rucker, G., Harbord, R. M., Schmid, C. H., Tetzlaff, J., Deeks, J. J., Peters, J., Macaskill, P., Schwarzer, G., Duval, S., Altman, D. G., Moher, D. & Higgins, J. P. 2011. Recommendations for examining and interpreting funnel plot asymmetry in meta-analyses of randomised controlled trials. *Bmj*, 343, d4002.

Stone, W. S., Giuliano, A. J., Tsuang, M. T., Braff, D. L., Cadenhead, K. S., Calkins, M. E., Dobie, D. J., Faraone, S. V., Freedman, R., Green, M. F., Greenwood, T. A., Gur, R. E., Gur, R. C., Light, G. A., Mintz, J., Nuechterlein, K. H., Olincy, A., Radant, A. D., Roe, A. H., Schork, N. J., Siever, L. J., Silverman, J. M., Swerdlow, N. R., Thomas, A. R., Tsuang, D. W., Turetsky, B. I. & Seidman, L. J. 2011. Group and site differences on the California Verbal Learning Test in persons with schizophrenia and their first-degree relatives: findings from the Consortium on the Genetics of Schizophrenia (COGS). *Schizophr Res*, 128, 102-10.

Tang Y., Chen K., Zhou Y., et al. 2015. Neural activity changes in unaffected children of patients with schizophrenia: A resting-state fMRI study. *Schizophr Res*, 168, 360-5.

Thoma, R. J., Monnig, M., Hanlon, F. M., Miller, G. A., Petropoulos, H., Mayer, A. R., Yeo, R., Euler, M., Lysne, P., Moses, S. N. & Canive, J. M. 2009. Hippocampus volume and episodic memory in schizophrenia. *J Int Neuropsychol Soc*, 15, 182-95.

Toulopoulou, T., Grech, A., Morris, R. G., Schulze, K., McDonald, C., Chapple, B., Rabe-Hesketh, S. & Murray, R. M. 2004. The relationship between volumetric brain changes and cognitive function: a family study on schizophrenia. *Biol Psychiatry*, 56, 447-53.

Vakil, E. & Blachstein, H. 1993. Rey Auditory-Verbal Learning Test: structure analysis. *J Clin Psychol*, 49, 883-90.

Van Erp, T. G., Hibar, D. P., Rasmussen, J. M., Glahn, D. C., Pearlson, G. D., Andreassen, O. A., Agartz, I., Westlye, L. T., Haukvik, U. K., Dale, A. M., Melle, I., Hartberg, C. B., Gruber, O., Kraemer, B., Zilles, D., Donohoe, G., Kelly, S., McDonald, C., Morris, D. W., Cannon, D. M., Corvin, A., Machielsen, M. W., Koenders, L., De Haan, L., Veltman, D. J., Satterthwaite, T. D., Wolf, D. H., Gur, R. C., Gur, R. E., Potkin, S. G., Mathalon, D. H., Mueller, B. A., Preda, A., Macciardi, F., Ehrlich, S., Walton, E., Hass, J., Calhoun, V. D., Bockholt, H. J., Sponheim, S. R., Shoemaker, J. M., Van Haren, N. E., Hulshoff Pol, H. E., Ophoff, R. A., Kahn, R. S., Roiz-Santanez, R., Crespo-Facorro, B., Wang, L., Alpert, K. I., Jonsson, E. G., Dimitrova, R., Bois,

C., Whalley, H. C., McIntosh, A. M., Lawrie, S. M., Hashimoto, R., Thompson, P. M. & Turner, J. A. 2016. Subcortical brain volume abnormalities in 2028 individuals with schizophrenia and 2540 healthy controls via the ENIGMA consortium. *Mol Psychiatry*, 21, 547-53.

Van Petten C. 2004. Relationship between hippocampal volume and memory ability in healthy individuals across the lifespan: review and meta-analysis. *Neuropsychologia*, 42, 1394-413.

Wechsler, D. 1987. *Wechsler Memory Scale-Revised Manual.*, San Antonio, Tex, Psychological Corp.

Weiss, A. P., Zalesak, M., Dewitt, I., Goff, D., Kunkel, L. & Heckers, S. 2004. Impaired hippocampal function during the detection of novel words in schizophrenia. *Biol Psychiatry*, 55, 668-75.

Witthaus, H. 2010. Hippocampal subdivision and amygdalar volumes in patients in an at-risk mental state for schizophrenia. *Journal of Psychiatry and Neuroscience*, 35, 33-40.

Wood, S. J., Kennedy, D., Phillips, L. J., Seal, M. L., Yucel, M., Nelson, B., Yung, A. R., Jackson, G., McGorry, P. D., Velakoulis, D. & Pantelis, C. 2010. Hippocampal pathology in individuals at ultra-high risk for psychosis: a multi-modal magnetic resonance study. *Neuroimage*, 52, 62-8.

Yang, C., Wu, S., Lu, W., Bai, Y. & Gao, H. 2015. Brain differences in first-episode schizophrenia treated with quetiapine: a deformation-based morphometric study. *Psychopharmacology (Berl)*, 232, 369-77.

Zeineh, M. M., Engel, S. A., Thompson, P. M. & Bookheimer, S. Y. 2003. Dynamics of the hippocampus during encoding and retrieval of face-name pairs. *Science*, 299, 577-80.

Zhou Y., Shu N., Liu Y., et al. 2008. Altered resting-state functional connectivity and anatomical connectivity of hippocampus in schizophrenia. *Schizophr Res*, 100, 120-32.

Zierhut K. B. B., Schott B., Fenker D., Walter M., Albrecht D., Steiner J., Schütze H., Northoff G., Düzel E., Schiltz K. 2010. The role of hippocampus dysfunction in deficient memory encoding and positive symptoms in schizophrenia. *Psychiatry Res*, 183, 187-94.

Zierhut, K. C., Grassmann, R., Kaufmann, J., Steiner, J., Bogerts, B. & Schiltz, K. 2013. Hippocampal CA1 deformity is related to symptom severity and antipsychotic dosage in schizophrenia. *Brain*, 136, 804-14.

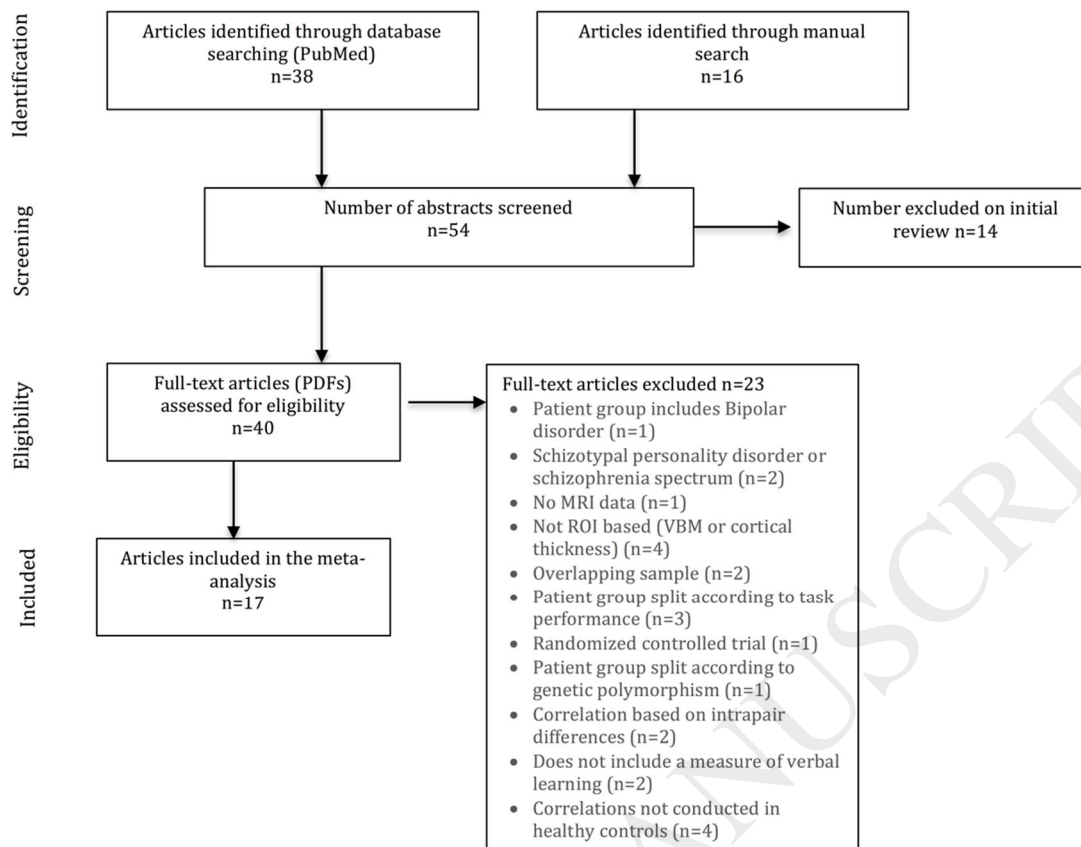


Figure 1. Flow chart of the screening and selection process.

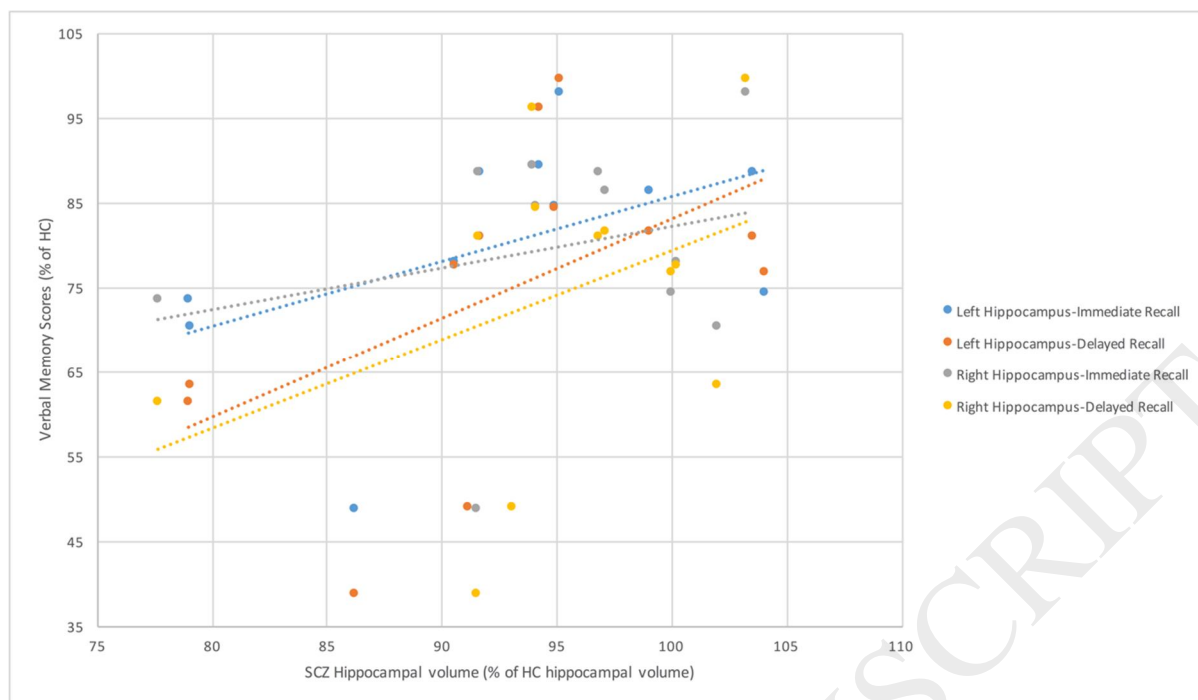


Figure 2. Graph showing that verbal learning in patients with schizophrenia and their relatives is 55-90% that of healthy controls whereas hippocampal volume is 75-105% that of controls. Memory scores and hippocampal volumes of healthy controls were all set to 100% and are not shown on the graph.

Study	Task	Region	Covariates	Stage	n	Age (mean)	Males	AP Med	n	Age (mean)	Males
							(%)	(%)			(%)
Immediate recall											
					Schizophrenia or GHR				Healthy Controls		
Herold et al., 2015	WMS-R LM I	L/R Hipp, Ant & Post	Edu	SCZ	25 old 23 young	55.92 32.78	76 60.9	88 100	21	53.67	57.1
Guo et al., 2014	HVLT total immediate	L/R Hipp	Age, sex, Edu, PANSS total	FEP	51	22.5	64.7	0	41	22.8	58.5
Francis et al., 2013	WMS-R LM I	L/R Sub	None	GHR	46	25	30.4	0	30	24	43.3
Killgore et al., 2009	WMS-R LM I	L/R Hipp	None	SCZ	19	34.3	73.68	100*	20	27.4	90
Thoma et al., 2009	WMS-R LM I	L/R Ant & Post	ICV	SCZ	24	40.09	83.33	100	24	41.74	66.67
Exner et al., 2008	WMS-R LM I	L/R Hipp	None	SCZ	21	31	66.67	100	21	29	61.9
Seidman et al., 2002	WMS-R LM I	L/R Hipp	Sex, group, sex*group, Hand, Eth, parental Edu, IQ	GHR	28 simplex 17 multiplex	41.9 38.9	35.7 41.2	0	48	40.1	56.3
Delayed recall											
					Schizophrenia or GHR				Healthy Controls		
Herold et al., 2015	WMS-R LM II	L/R Hipp, Ant & Post	Edu	SCZ	25 old 23 young	55.92 32.78	76 60.9	88 100	21	53.67	57.1
Hauvik et al., 2015	CVLT delayed free recall	Total Sub	None	SCZ	177	31.6	61	84.7	261	36	52
Lappin et al., 2014	RAVLT trial 7	L/R Hipp	None	FEP	90				83		
Francis et al., 2013	HVLT total	L/R Sub	None	GHR	46	25	30.4	0	30	24	43.3
Karnik-Henry et al., 2012	WMS-R LM I, LM II & CVLT composite	L Hipp	Sex	SCZ GHR	36 31	22.5 22.1	84.6 45.5	84.6 0	46 49	21.1 20.4	56.52 28
Killgore et al., 2009	WMS-R LM II	L/R Hipp	None	SCZ	19	34.3	73.68	100*	20	27.4	90
Thoma et al., 2009	WMS-R LM II	L/R Ant & Post	ICV	SCZ	24	40.09	83.33	100	24	41.74	66.67
Exner et al., 2008	WMS-R LM II	L/R and total Hipp	None	SCZ	21	31	66.67	100	21	29	61.9
Rametti et al., 2007	RAVLT delayed	L Ant	None	SCZ	28	27.7	75	100	33	28.09	63.64
Kuroki et al., 2006	WMS-R LM II	L/R Hipp	MD	SCZ	24	40.3	100	100	31	40.6	100
Toulopoulou et al., 2004	WMS-R LM II	L Hipp	Age, gender, group	SCZ GHR	56 90	32.8 50.2	69.7 37.8	100 0	55	38.8	49.1
Seidman et al., 2002	WMS-R LM II	L/R Hipp	Sex, group, sex*group, Hand, Eth, parental Edu, IQ	GHR	28 simplex 17 multiplex	41.9 38.9	35.7 41.2	0	48	40.1	56.3
Sanfilippo et al., 2002	WAIS, WMS-R LM I, LM II, Buschke	L/R Hipp	ICV, age	SCZ	62	38.8	100	100	27	35.7	100
O'Driscoll et al., 2001	WMS-R LM II	L/R and total Am/Hipp	None	GHR	20	36.2	45	0	14	35.4	36
Gur et al., 2000	WMS-R LM I, LM II & CVLT (1-5)	Total Hipp	None	SCZ	100	29.2	58	61	110	26.1	51
Sachdev et al., 2000	LM1 & 2, VR, WAIS, COWAT, WCST	L/R Hipp	None	SCZ	20	64.4	60	100	24	72.67	79

Table 1. Description of the demographic, cognitive and neuroimaging measures and covariates of the samples included in the meta-analysis.

WMS-R: Wechsler memory scale-revised, LM I: logical memory 1 (i.e. immediate recall), LM II: logical memory 2 (i.e. delayed recall), SCZ: schizophrenia; AP Med: antipsychotic medication, GHR: genetic high risk; RAVLT: Rey Auditory Verbal Learning Task, HVLT: Hopkins verbal learning task, ICV: intracranial volume, L/R: left/right, Sub: subiculum, Hipp: hippocampus, Am: amygdala, Ant: anterior, Post: posterior, Edu: education, Eth: ethnicity, MD: medication dosage, Hand: handedness, * denotes that all patients were medicated but the study does not specify the type of medication.

Table 2. Comparison of MetaNSUE findings using combined, simple and partial correlation coefficients in patients with schizophrenia and healthy controls.

Analysis (group, hemisphere, type of recall)	Simple and partial correlations combined					Simple correlations only					Partial correlations only				
	Number of independent studies (number of correlations)	Number of NSUEs	Total* number of subjects	Meta-analysis result: Correlation coefficient (p value)	95% CI	Number of independent studies (number of correlations)	Number of NSUEs	Total* number of subjects	Meta-analysis result: Correlation coefficient (p value)	95% CI	Number of independent studies (number of correlations)	Number of NSUEs	Total* number of subjects	Meta-analysis result: Correlation coefficient (p value)	95% CI
SCZ left immediate	5 (8)	0	162	0.256 (0.0029)	0.089 to 0.409	3 (4)	0	63	0.146 (0.24)	-0.095 to 0.371	3 (6)	0	123	0.242 (0.097)	-0.045 to 0.493
SCZ left delayed	11 (15)	0	431	0.131 (0.0038)	0.042 to 0.218	7 (8)	0	229	0.179 (0.0304)	0.017 to 0.332	6 (10)	0	250	0.153 (0.0464)	0.002 to 0.297
SCZ right immediate	5 (8)	0	162	0.230 (0.001)	0.094 to 0.358	3 (4)	0	63	0.174 (0.15)	-0.066 to 0.396	3 (6)	0	123	0.128 (0.37)	-0.150 to 0.387
SCZ right delayed	8 (12)	0	311	0.234 (<.0001)	0.135 to 0.329	6 (7)	0	201	0.256 (0.0013)	0.102 to 0.398	4 (8)	0	158	0.227 (0.093)	-0.038 to 0.462
HC left immediate	7 (10)	1	204	0.019 (0.87)	-0.207 to 0.243	4 (5)	0	95	-0.122 (0.43)	-0.402 to 0.178	4 (7)	1	133	0.248 (0.0073)	0.068 to 0.412
HC left delayed	15 (19)	7	519	0.065 (0.26)	-0.049 to 0.177	8 (9)	2	243	0.103 (0.24)	-0.068 to 0.267	8 (12)	5	302	0.075 (0.32)	-0.072 to 0.219
HC right immediate	7 (10)	1	204	0.063 (0.57)	-0.152 to 0.272	4 (5)	0	95	-0.081 (0.62)	-0.379 to 0.233	4 (7)	1	133	0.297 (0.0007)	0.128 to 0.449
HC right delayed	11 (15)	4	336	0.123 (0.0699)	-0.01 to 0.251	7 (8)	1	210	0.095 (0.32)	-0.093 to 0.277	5 (9)	3	150	0.207 (0.0235)	0.028 to 0.372

*Total only includes the number of subjects from repeated measures once, NSUE: non-significant unreported effect, SCZ: schizophrenia, HC: healthy control, CI: confidence interval.