



University of Southern Denmark

Corrigendum to "Neuroanatomical correlates of Klinefelter syndrome studied in relation to the neuropsychological profile" [NeuroImage:Clin 4 (2014) 1-9]

Skakkebæk, Anne; Gravholt, Claus Højbjerg; Rasmussen, Peter Mondrup; Bojesen, Anders; Jensen, Jens Søndergaard; Fedder, Jens; Laurberg, Peter; Hertz, Jens Michael; Østergaard, John Rosendahl; Pedersen, Anders Degn; Wallentin, Mikkel

Published in:
NeuroImage: Clinical

DOI:
10.1016/j.nicl.2016.01.005

Publication date:
2016

Document version:
Final published version

Document license:
CC BY-NC-SA

Citation for published version (APA):
Skakkebæk, A., Gravholt, C. H., Rasmussen, P. M., Bojesen, A., Jensen, J. S., Fedder, J., Laurberg, P., Hertz, J. M., Østergaard, J. R., Pedersen, A. D., & Wallentin, M. (2016). Corrigendum to "Neuroanatomical correlates of Klinefelter syndrome studied in relation to the neuropsychological profile" [NeuroImage:Clin 4 (2014) 1-9]. *NeuroImage: Clinical*, 11, 52. <https://doi.org/10.1016/j.nicl.2016.01.005>

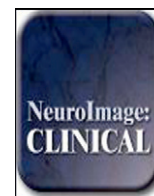
Go to publication entry in University of Southern Denmark's Research Portal

Terms of use

This work is brought to you by the University of Southern Denmark.
Unless otherwise specified it has been shared according to the terms for self-archiving.
If no other license is stated, these terms apply:

- You may download this work for personal use only.
- You may not further distribute the material or use it for any profit-making activity or commercial gain
- You may freely distribute the URL identifying this open access version

If you believe that this document breaches copyright please contact us providing details and we will investigate your claim.
Please direct all enquiries to puresupport@bib.sdu.dk



Corrigendum

Corrigendum to “Neuroanatomical correlates of Klinefelter syndrome studied in relation to the neuropsychological profile” [NeuroImage: Clin 4 (2014) 1–9]



Anne Skakkebak^{a,*}, Claus Højbjerg Gravholt^{a,b}, Peter Mondrup Rasmussen^c, Anders Bojesen^d, Jens Søndergaard Jensen^e, Jens Fedder^f, Peter Laurberg^g, Jens Michael Hertz^h, John Rosendahl Østergaardⁱ, Anders Degn Pedersen^{j,k}, Mikkel Wallentin^{c,l}

^aDepartment of Endocrinology and Internal Medicine (MEA), Aarhus University Hospital, 8000 Aarhus C, Denmark

^bDepartment of Molecular Medicine, Aarhus University Hospital, 8200 Aarhus N, Denmark

^cCenter of Functionally Integrative Neuroscience, Aarhus University Hospital, 8000 Aarhus C, Denmark

^dDepartment of Clinical Genetics, Vejle Hospital, Sygehus Lillebaelt, 7100 Vejle, Denmark

^eThe Research Clinic for Functional Disorders and Psychosomatics, Aarhus University Hospital, 8200 Aarhus N, Denmark

^fFertility Clinic, Department of Gynecology and Obstetrics, Odense University Hospital, 5000 Odense, Denmark

^gDepartment of Endocrinology, Aalborg University Hospital, 9000 Aalborg, Denmark

^hDepartment of Clinical Genetics, Odense University Hospital, 5000 Odense, Denmark

ⁱCenter for Rare Diseases, Department of Pediatrics, Aarhus University Hospital, 8200 Aarhus N, Denmark

^jVejleford Rehabilitation Center, 7140 Stouby, Denmark

^kDepartment of Psychology and Behavioral Sciences, Aarhus University, 8000 Aarhus C, Denmark

^lCenter for Semiotics, Aarhus University, 8000 Aarhus C, Denmark

In the paper entitled “Neuroanatomical correlates of Klinefelter syndrome studied in relation to the neuropsychological profile” by Anne Skakkebak, Claus Højbjerg Gravholt, Peter Mondrup Rasmussen, Anders Bojesen, Jens Søndergaard Jensen, Jens Fedder, Peter Laurberg, Jens Michael Hertz, John Rosendahl Østergaard, Anders Degn Pedersen and Mikkel Wallentin, published in NeuroImage: Clinical, Volume 4, 2014, pp. 1–9 we have become aware, that the reported p-value for the comparison of Klinefelter Syndrome participants and control participants on the Stroop Color Word Test variable “SCWT diff” in Table 2 is incorrect. The correct value for the p-value is 0.27, and there is therefore no significance between KS and controls on the Stroop Color Word Test inhibition difference score. The reported SCWT diff mean scores for the

two Groups in table 2 are correct. Based on our error we wrote in section 3.2. that KS patients have poorer response inhibition compared to controls. This is then also not correct as there is no difference in response inhibition between KS and controls. We have re-analyzed all other results and this is the only result that is not correct.

The incorrect p-value does not affect any of the other results or analyzes in the article, and does not affect the discussion and conclusion of the article.

The authors would like to apologize for any inconvenience this has caused to the reviewers of this article and readers of the journal.

DOI of original article: <http://dx.doi.org/10.1016/j.nicl.2013.10.013>.

* Corresponding author.

E-mail address: asj@ki.au.dk (A. Skakkebak).